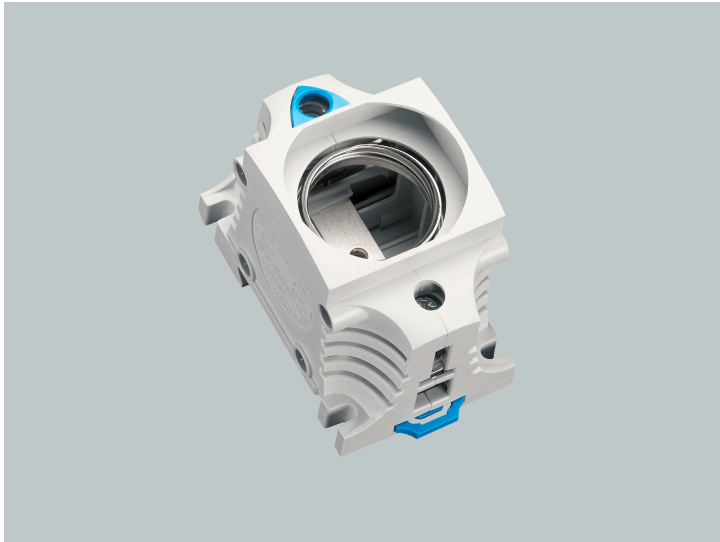


## D fuse base, panel-mounting (31175)



The picture may show a similar product.

### Description

Part No.: **31175000A**

TRITON<sup>®</sup> Panel

D fuse base, panel-mounting

E 33 / 63 A / 1P, for screw-in gauge rings

touch protected acc. to DGUV V3

### System

Mounting plate, DIN rail

Product group 02

Subgroup 12

pack size 9

EAN 4021267311759

catalog page 2020 : 6.5

ECLASS 6.1 27142103  
ECLASS 7.1 27142103  
ETIM 4.0 EC000094  
ETIM 5.0 EC000094

## Approvals

### Standards

IEC 60269-1:2006 + A1:2009 + A2:2014  
IEC 60269-3:2010 + A1:2013 + A2:2019

### Approvals

CCC , DNV GL , EAC



type number: 3313  
EAC Type: D

## Technical data

for fuse links size: D  
fuse links acc. to standard: IEC / HD 60269-3  
permitted power dissipation of the fuse-link: 7 W

### Details IEC

#### Standards

IEC 60269-1:2006 + A1:2009 + A2:2014  
IEC 60269-3:2010 + A1:2013 + A2:2019

#### Electrical data IEC

Rated current (IEC): 63 A  
rated voltage (IEC) AC: 500 V

rated voltage (IEC) DC: 500 V

rated surge voltage  $U_{imp}$  : 4 kV

The insulation performance of the article depends on the installation conditions.

approved with fuse links of operation class: gG  
short-circuit strength when protected by fuses: 50 kA

power dissipation of the article:

The power dissipation at a typical load of 80 % results to 2.6 W.

(The power dissipation at full load would be 4.0 W.)

### Supplementary data IEC

The following values have been verified with tests under certain conditions. Please ask Wöhner for this conditions before designing your panel.

max. permitted voltage (IEC) AC: 725 V

max. permitted voltage (IEC) DC: 525 V

The feed direction marked on the product must be strictly observed.  
as per DIN VDE 0636 Part 3011, also 690V

### Mechanical data

W x H x D: 50 x 80 x 55

weight: 18.6 kg/100

poles: 1-pole

### Terminal points

min. cross-section: 1.5 mm<sup>2</sup>

max. cross-section: 35 mm<sup>2</sup>

Not suitable for aluminium cables !

box terminal :

1,5 - 35 mm<sup>2</sup> flexible cables, directly or with wire-end ferrule,

1,5 - 10 mm<sup>2</sup> solid round cables

Md 2,4 - 3,2 Nm

(flexible cables of maximum cross-section may not fit when using wire-end ferrule)

## Accessories



### **31028000A**

connection terminal, side connection

6 - 50 mm<sup>2</sup>

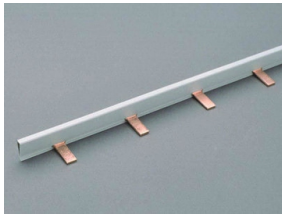
for: 31014, 31024, 31309, 31311



### **31086000**

label support

for Triton, snap-on



### **31311000A**

1-pole comb type busbar, for E33, pitch 50 mm

80 A, 1 m long

16 mm<sup>2</sup>