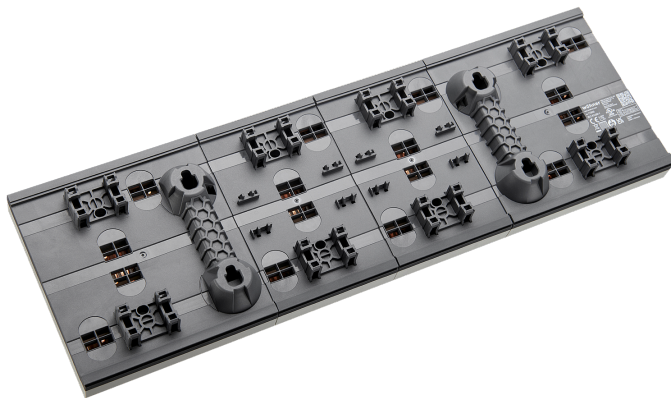
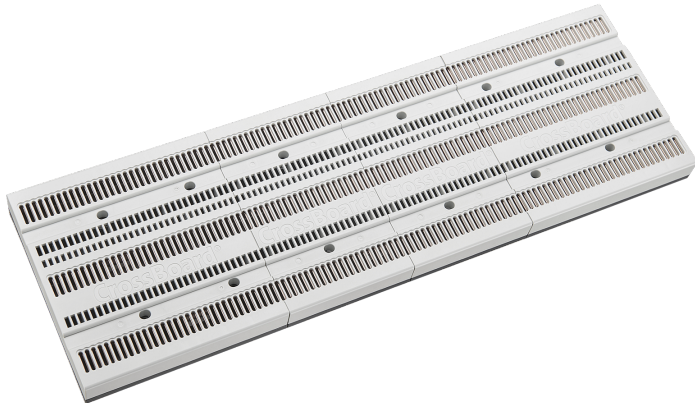
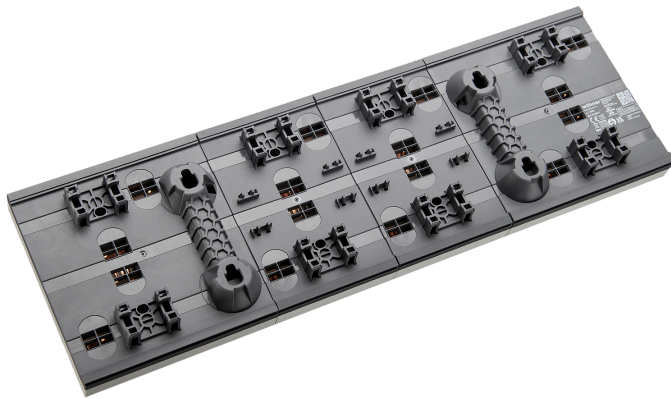
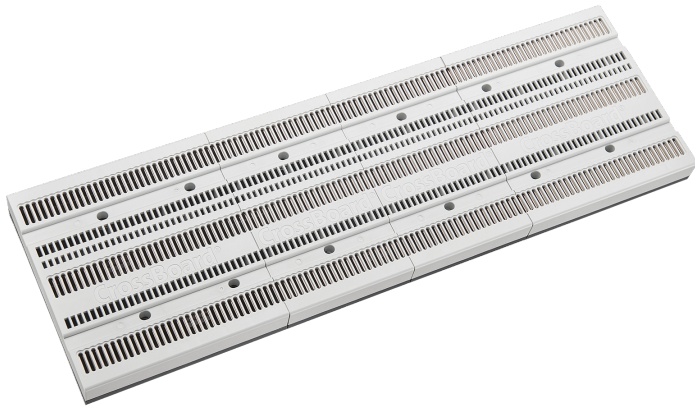


## basic system 160 A (11800)



The picture may show a similar product.



## Description

Part No.: **11800**000A

CrossBoard®

basic system 160 A

3-pole

800 mm long, touch-safe protected

when fixing on a mounting plate, article 01585 is additionally required  
with CrossLink® interface

**NEW**

## System

CrossBoard®

## Advantages of the product

touch-safe protected busbar system up to 160 A  
rear feedable  
plug and play  
easy to screw to mounting plates  
completely pre-assembled and immediately ready for use

**Product group** 06

**Subgroup** 50

**pack size** 1

**EAN** 4021267118006

**ECLASS 6.1** 27400613

**ECLASS 7.1** 27400613

**ETIM 4.0** EC001900

**ETIM 5.0** EC001900

## Approvals

### Standards

IEC 61439-1:2011

UL 508

### Approvals

IEC (CB) , UL , EAC



for UL feeder circuits >250V

type number: CB-XL-800-24x16

EAC Type: CB

UL file: E123577, UL category (for USA): NMTR <http://www.ul.com>

UL file: E123577, UL category (for Canada): NMTR7 <http://www.ul.com>

CCC approval: no certification required

# Technical data

## Details IEC

### Standards

IEC 61439-1:2011

### Electrical data IEC

Rated current (IEC): 160 A

rated voltage (IEC) AC: 690 V

rated isolation voltage  $U_i$  AC: 800 V

rated surge voltage  $U_{imp}$ : 6 kV

rated peak withstand current  $I_{pk}$  max.: 30 kA

rated short-time withstand current  $I_{cw}$  (0.1 s) max.: 15 kA

### Supplementary data IEC

The following values have been verified with tests under certain conditions. Please ask Wöhner for this conditions before designing your panel.

max. permitted voltage (IEC) DC: 800 V

## Details UL

### Standards

UL 508

for UL feeder circuits >250V

### Electrical data UL

rated current (UL): 160 A

rated voltage (UL) AC: 600 V

rated frequency (UL): 50 / 60 Hz

rated voltage (UL) DC: 600 V

SCCR unprotected max.: 10 kA

3 cycles (without OPD) @ 600 V AC

SCCR protected max.: 100 kA

SCCR: 100 kA with JDDZ fuse Class J 400 A / 600 V AC  
65 kA with any DIVQ/7 circuit breaker 400 A / 480 V AC

**Mechanical data**

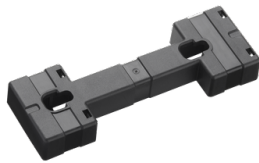
W x H x D: 800 x 160 x 45

weight: 301.5 kg/100

poles: 3-pole

degree of protection: IP20

## Accessories



**01585000A**

fastening module

for additional fastening for screw mounting

for: CrossBoard 500 - 1100 mm

**NEW**