

basic system 125 A (11405)    PCF: 10.43 kg CO<sub>2</sub>e



The picture may show a similar product.

## Description

Part No.: **11405**000A

CrossBoard®

basic system 125 A

3-pole

405 mm long, touch-safe protected  
with CrossLink® interface

## System

CrossBoard®

## Advantages of the product

all-round touch-safe protected busbar system up to 125A  
mounting to DIN rails with no tools  
simple screwing-on to mounting plates  
completely pre-assembled and ready to use

Product group 06  
Subgroup 50

pack size 1  
EAN 4021267114053

catalog page 2020 : 1.1

ECLASS 6.1 27400613  
ECLASS 7.1 27400613  
ETIM 4.0 EC001900  
ETIM 5.0 EC001900

## Approvals

### Standards

IEC 61439-1:2011  
UL 508

### Approvals

IEC (CB) , UL , EAC



for UL feeder circuits >250V

type number: CB405-24x7  
EAC Type: CB

UL file: E123577, UL category (for USA): NMTR <http://www.ul.com>  
UL file: E123577, UL category (for Canada): NMTR7 <http://www.ul.com>  
CCC approval: no certification required

## Technical data

### Details IEC

#### Standards

IEC 61439-1:2011

### Electrical data IEC

Rated current (IEC): 125 A  
rated voltage (IEC) AC: 690 V

rated isolation voltage  $U_i$  AC: 800 V  
rated surge voltage  $U_{imp}$ : 6 kV

rated peak withstand current  $I_{pk}$  max.: 25 kA  
rated short-time withstand current  $I_{cw}$  (0.3 s) max.: 10 kA

power dissipation of the article:  
The power dissipation at a typical load of 80 % results to 6.0 W.  
(The power dissipation at full load would be 9.3 W.)

### Supplementary data IEC

The following values have been verified with tests under certain conditions. Please ask Wöhner for this conditions before designing your panel.

max. permitted voltage (IEC) DC: 800 V

### Details UL

#### Standards

UL 508

for UL feeder circuits >250V

### Electrical data UL

rated current (UL): 100 A  
rated voltage (UL) AC: 600 V  
rated frequency (UL): 50 / 60 Hz  
rated voltage (UL) DC: 600 V

SCCR unprotected max.: 10 kA  
3 cycles (without OPD) @ 600 V AC  
SCCR protected max.: 100 kA  
with JDDZ fuse Class J 175 A / 600 V AC

SCCR: 100 kA with JDDZ fuse Class J 175 A / 600 V AC  
65 kA with any DIVQ/7 circuit breaker 100 A / 600 V AC  
100 kA with any DIVQ/7 circuit breaker 100 A / 480 V AC

### **Mechanical data**

W x H x D: 405 x 160 x 45  
weight: 137.2 kg/100  
poles: 3-pole

degree of protection: IP20

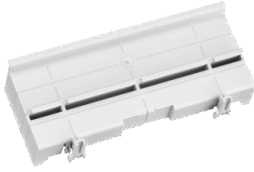
### **Reference**

We recommend the use of a high DIN rail (35x15) for optimum stability and maximum load of 4 kg.  
For higher loads we recommend to fix the CrossBoard® with screws on a panel.  
For the use of the QUADRON®CrossBoard NH fuse switch-disconnector size 000 the CrossBoard® has to be fixed with screws on a panel.  
For details please see the mounting instruction.

2 CrossBoards® mounted side by side can get a shared feeding component.

The drilling plan for mounting 2 CrossBoards® side by side is available as [Dimensioned drawing #2](#)

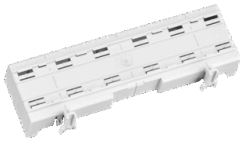
## Accessories



### **11050000A**

CrossBar®  
mounting rail for accessories  
attachable to CrossBoard  
for distribution terminals

**NEW**



### **11051000A**

CrossBar®  
mounting rail for accessories  
attachable to CrossBoard  
for distribution blocks  
for: Phoenix Contact PTFIX

**NEW**