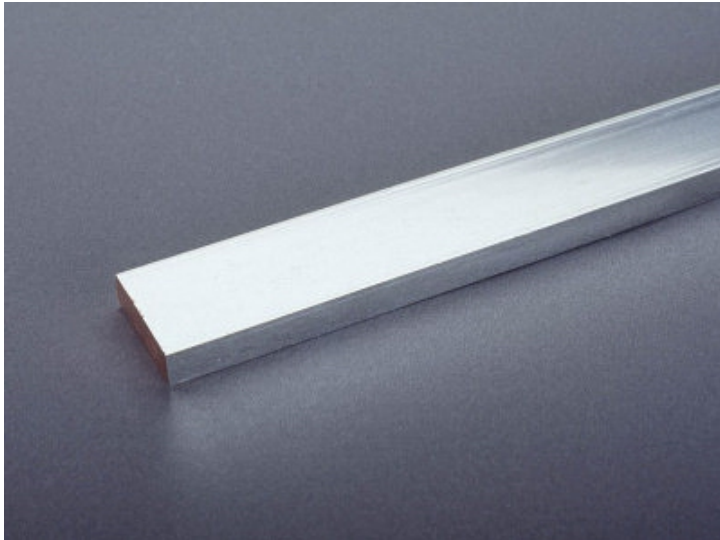


## busbar 30 x 10 (01625)



The picture may show a similar product.

### Description

Part No.: **01625**000  
busbar 30 x 10  
length 2.40 m, tinned

### System

60Classic, 185Power, 100Energy, centre feed unit

### Advantages of the product

Tin-plated Cu busbars considerably reduce the effort of preparing the contact points.  
The Cu busbars are effectively protected against aggressive media.

**Product group** 06

**Subgroup** 83

**pack size** 1

**EAN** 4021267016258

catalog page 2020 : 3.3, 4.1

ECLASS 6.1 27370303

ECLASS 7.1 27370303

ETIM 4.0 EC001522

ETIM 5.0 EC001522

## Approvals

### Standards

IEC 61439-1:2011

UL 508

### Approvals

CSA , UL , DNV GL , EAC



for UL feeder circuits >250V

type number: 30x10-L

EAC Type: BB-F

UL file: E123577, UL category (for USA): NMTR <http://www.ul.com>

UL file: E123577, UL category (for Canada): NMTR7 <http://www.ul.com>

CSA file: 110285, CSA class: 3211-37 <http://directories.csa-international.org>

CCC approval: no certification required

## Technical data

### Details IEC

#### Standards

IEC 61439-1:2011

### Electrical data

Please respect the insulation characteristics of the busbar support for your application.

short-circuit withstandability: see product description of the used busbar support

power dissipation of the article:

The power dissipation at a typical load of 80 % results to 40.3 W.

(The power dissipation at full load would be 63.0 W.)

### Supplementary data IEC

The following values have been verified with tests under certain conditions. Please ask Wöhner for this conditions before designing your panel.

current at 30 K 630 A

:

### Details UL

#### Standards

UL 508

for UL feeder circuits >250V

considering the permitted temperature rise at the concrete installation conditions the following capacity could be accepted by UL (file E197039

max. load acc. to UL 508:

630 A

for applications in the system 60Classic up to 756 A

Notice the rated voltage of the used busbar support in the application.

### Mechanical data

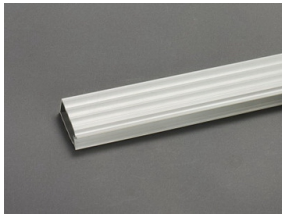
W x H x D: 2400 x 30 x 10

weight: 643.2 kg/100

cross-section: 300 mm<sup>2</sup>

Edge radius 0.5

## Accessories



### **01245000**

busbar cover  
for 12 - 30 x 10 busbar, 1 m long  
touch protection cover



### **37212000A**

current transformer 200 A / 5 A  
2.5 VA / class 1  
when used on busbars or in 630 A adapters, article 37900 is additionally required



### **37213000A**

current transformer 250 A / 5 A  
2.5 VA / class 1  
when used on busbars or in 630 A adapters, article 37900 is additionally required



### **37214000A**

current transformer 400 A / 5 A  
2.5 VA / class 1  
when used on busbars or in 630 A adapters, article 37900 is additionally required



### **37215000A**

current transformer 500 A / 5 A  
2.5 VA / class 1  
when used on busbars or in 630 A adapters, article 37900 is additionally required



### **37216000A**

current transformer 600 A / 5 A  
2.5 VA / class 1  
when used on busbars or in 630 A adapters, article 37900 is additionally required



### **37219000A**

current transformer 200 A / 5 A

1.5 VA / class 0.5

when used on busbars or in 630 A adapters, article 37900 is additionally required



### **37220000A**

current transformer 250 A / 5 A

2.5 VA / class 0.5

when used on busbars or in 630 A adapters, article 37900 is additionally required



### **37221000A**

current transformer 400 A / 5 A

2.5 VA / class 0.5

when used on busbars or in 630 A adapters, article 37900 is additionally required



### **37222000A**

current transformer 500 A / 5 A

2.5 VA / class 0.5

when used on busbars or in 630 A adapters, article 37900 is additionally required



### **37223000A**

current transformer 600 A / 5 A

2.5 VA / class 0.5

when used on busbars or in 630 A adapters, article 37900 is additionally required



### **37224000A**

current transformer 800 A / 5 A

2.5 VA / class 0.5

when used on busbars or in 630 A adapters, article 37900 is additionally required



### **37217000A**

current transformer 800 A / 5 A

2.5 VA / class 1

when used on busbars or in 630 A adapters, article 37900 is additionally required



### **37232000A**

current transformer 200 A / 5 A, with decl. of conformity

1.5 VA / class 0.5

when used on busbars or in 630 A adapters, article 37900 is additionally required



### **37233000A**

current transformer 250 A / 5 A, with decl. of conformity

2.5 VA / class 0.5

when used on busbars or in 630 A adapters, article 37900 is additionally required



### **37234000A**

current transformer 400 A / 5 A, with decl. of conformity

2.5 VA / class 0.5

when used on busbars or in 630 A adapters, article 37900 is additionally required



### **37235000A**

current transformer 500 A / 5 A, with decl. of conformity

2.5 VA / class 0.5

when used on busbars or in 630 A adapters, article 37900 is additionally required



### **37236000A**

current transformer 250 A / 5 A, with decl. of conformity

1.5 VA / class 0.5s

when used on busbars or in 630 A adapters, article 37900 is additionally required



### **37237000A**

current transformer 400 A / 5 A, with decl. of conformity

2.5 VA / class 0.5s

when used on busbars or in 630 A adapters, article 37900 is additionally required



### **37238000A**

current transformer 500 A / 5 A, with decl. of conformity

2.5 VA / class 0.5s

when used on busbars or in 630 A adapters, article 37900 is additionally required