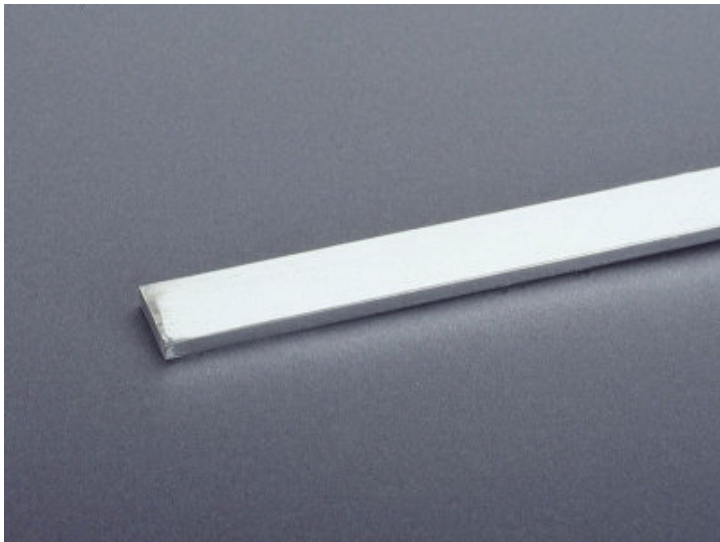


busbar 30 x 5 (01622)



The picture may show a similar product.

Description

Part No.: **01622000**
busbar 30 x 5
length 2.40 m, tinned

System

60Classic

Advantages of the product

Tin-plated Cu busbars considerably reduce the effort of preparing the contact points.
The Cu busbars are effectively protected against aggressive media.

Product group 06

Subgroup 82

pack size 1

EAN 4021267016227

catalog page 2020 : 3.3

ECLASS 6.1 27370303

ECLASS 7.1 27370303

ETIM 4.0 EC001522

ETIM 5.0 EC001522

Approvals

Standards

IEC 61439-1:2011

UL 508

Approvals

CSA , UL , DNV GL , EAC



for UL feeder circuits >250V

type number: 30x5-L

EAC Type: BB-F

UL file: E123577, UL category (for USA): NMTR <http://www.ul.com>

UL file: E123577, UL category (for Canada): NMTR7 <http://www.ul.com>

CSA file: 110285, CSA class: 3211-37 <http://directories.csa-international.org>

CCC approval: no certification required

Technical data

Details IEC

Standards

IEC 61439-1:2011

Electrical data

Please respect the insulation characteristics of the busbar support for your application.

short-circuit withstandability: see product description of the used busbar support

power dissipation of the article:

The power dissipation at a typical load of 80 % results to 41.0 W.

(The power dissipation at full load would be 64.0 W.)

Supplementary data IEC

The following values have been verified with tests under certain conditions. Please ask Wöhner for this conditions before designing your panel.

current at 30 K 450 A

:

Details UL

Standards

UL 508

for UL feeder circuits >250V

considering the permitted temperature rise at the concrete installation conditions the following capacity could be accepted by UL (file E197039

max. load acc. to UL 508:

500 A

Notice the rated voltage of the used busbar support in the application.

Mechanical data

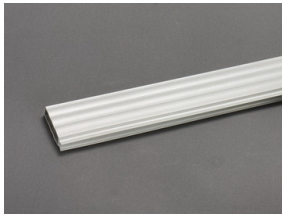
W x H x D: 2400 x 30 x 5

weight: 321.4 kg/100

cross-section: 150 mm²

Edge radius 0.5

Accessories



01244000

busbar cover
for 12 - 30 x 5 busbar, 1 m long
touch protection cover



37212000A

current transformer 200 A / 5 A
2.5 VA / class 1
when used on busbars or in 630 A adapters, article 37900 is additionally required



37213000A

current transformer 250 A / 5 A
2.5 VA / class 1
when used on busbars or in 630 A adapters, article 37900 is additionally required



37214000A

current transformer 400 A / 5 A
2.5 VA / class 1
when used on busbars or in 630 A adapters, article 37900 is additionally required



37215000A

current transformer 500 A / 5 A
2.5 VA / class 1
when used on busbars or in 630 A adapters, article 37900 is additionally required



37216000A

current transformer 600 A / 5 A
2.5 VA / class 1
when used on busbars or in 630 A adapters, article 37900 is additionally required



37219000A

current transformer 200 A / 5 A

1.5 VA / class 0.5

when used on busbars or in 630 A adapters, article 37900 is additionally required



37220000A

current transformer 250 A / 5 A

2.5 VA / class 0.5

when used on busbars or in 630 A adapters, article 37900 is additionally required



37221000A

current transformer 400 A / 5 A

2.5 VA / class 0.5

when used on busbars or in 630 A adapters, article 37900 is additionally required



37222000A

current transformer 500 A / 5 A

2.5 VA / class 0.5

when used on busbars or in 630 A adapters, article 37900 is additionally required



37223000A

current transformer 600 A / 5 A

2.5 VA / class 0.5

when used on busbars or in 630 A adapters, article 37900 is additionally required



37232000A

current transformer 200 A / 5 A, with decl. of conformity

1.5 VA / class 0.5

when used on busbars or in 630 A adapters, article 37900 is additionally required



37233000A

current transformer 250 A / 5 A, with decl. of conformity

2.5 VA / class 0.5

when used on busbars or in 630 A adapters, article 37900 is additionally required



37234000A

current transformer 400 A / 5 A, with decl. of conformity

2.5 VA / class 0.5

when used on busbars or in 630 A adapters, article 37900 is additionally required



37235000A

current transformer 500 A / 5 A, with decl. of conformity

2.5 VA / class 0.5

when used on busbars or in 630 A adapters, article 37900 is additionally required



37236000A

current transformer 250 A / 5 A, with decl. of conformity

1.5 VA / class 0.5s

when used on busbars or in 630 A adapters, article 37900 is additionally required



37237000A

current transformer 400 A / 5 A, with decl. of conformity

2.5 VA / class 0.5s

when used on busbars or in 630 A adapters, article 37900 is additionally required



37238000A

current transformer 500 A / 5 A, with decl. of conformity

2.5 VA / class 0.5s

when used on busbars or in 630 A adapters, article 37900 is additionally required