

busbar 12 x 5 (01618)



The picture may show a similar product.

Description

Part No.: **01618**000
busbar 12 x 5
length 2.40 m, tinned

System

60Classic, 30Compact 3P, 30Compact 5P

Advantages of the product

Tin-plated Cu busbars considerably reduce the effort of preparing the contact points.
The Cu busbars are effectively protected against aggressive media.

Product group 06

Subgroup 82

pack size 1

EAN 4021267016180

catalog page 2020 : 2.1, 2.5, 3.3

ECLASS 6.1 27370303

ECLASS 7.1 27370303

ETIM 4.0 EC001522

ETIM 5.0 EC001522

Approvals

Standards

IEC 61439-1:2011

UL 508

Approvals

CSA , UL , DNV GL , EAC



for UL feeder circuits >250V

type number: 12x5-L

EAC Type: BB-F

UL file: E123577, UL category (for USA): NMTR <http://www.ul.com>

UL file: E123577, UL category (for Canada): NMTR7 <http://www.ul.com>

CSA file: 110285, CSA class: 3211-37 <http://directories.csa-international.org>

CCC approval: no certification required

Technical data

Details IEC

Standards

IEC 61439-1:2011

Electrical data

Please respect the insulation characteristics of the busbar support for your application.

short-circuit withstandability: see product description of the used busbar support

power dissipation of the article:

The power dissipation at a typical load of 80 % results to 20.5 W.

(The power dissipation at full load would be 32.0 W.)

Supplementary data IEC

The following values have been verified with tests under certain conditions. Please ask Wöhner for this conditions before designing your panel.

current at 30 K 200 A

:

Die erreichbare Strombelastbarkeit hängt von den Temperaturverhältnissen (Lufttemperatur, Schienentemperatur) am Einbauort ab. [Strombelastbarkeit](#)

Details UL

Standards

UL 508

for UL feeder circuits >250V

considering the permitted temperature rise at the concrete installation conditions the following capacity could be accepted by UL (file E197039

max. load acc. to UL 508: 150 A

Notice the rated voltage of the used busbar support in the application.

Mechanical data

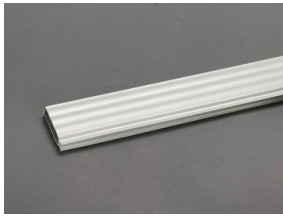
W x H x D: 2400 x 12 x 5

weight: 128.4 kg/100

cross-section: 60 mm²

Edge radius 0.5

Accessories



01244000

busbar cover
for 12 - 30 x 5 busbar, 1 m long
touch protection cover



01242000A

busbar cover
for 12 x 5 busbar, 1 m long
touch protection cover

NEW