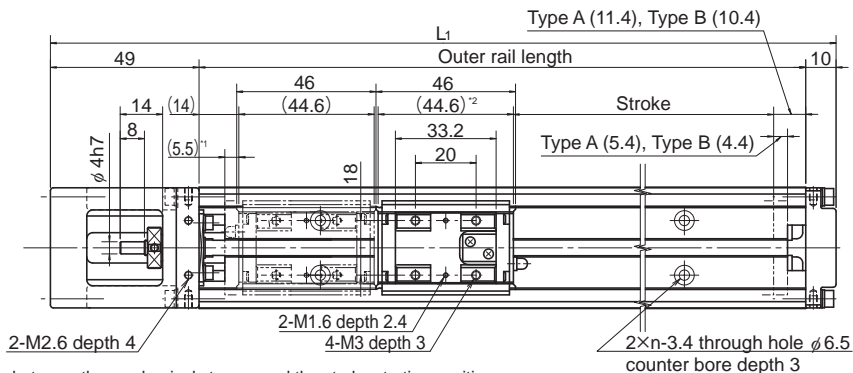


Model SKR20 Standard Type

Model SKR20□□A (with a Single Long Nut Block)

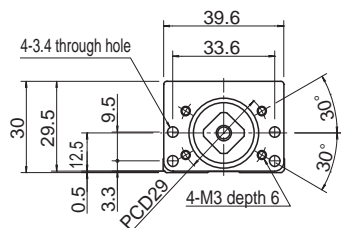
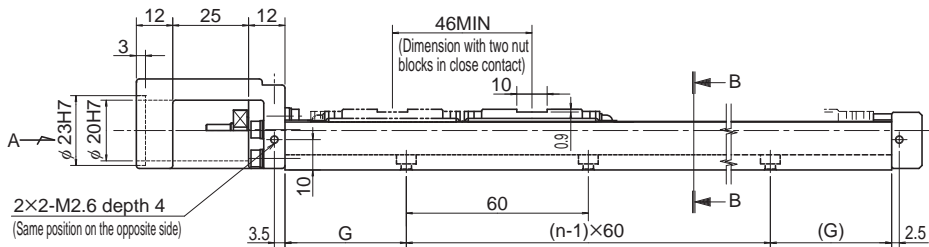
Model SKR20□□B (with Two Long Nut Blocks)

For model number coding, see **A2-28**.

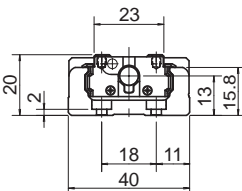


*1 Distance between the mechanical stopper and the stroke starting position.

*2 Indicates the inner block length when calculating the available stroke range. The length in model SKR-B (with two long-type inner blocks) is 90.6 mm.



A arrow view



B-B cross section

Stroke (mm) (stroke between mechanical stoppers)		Outer rail length (mm)	Overall length L.(mm)	G (mm)	n	Overall main unit mass (kg)	
Type A	Type B					Type A	Type B
30(40.9)	—	100	159	20	2	0.45	—
80(90.9)	35(44.9)	150	209	15	3	0.58	0.66
130(140.9)	85(94.9)	200	259	40	3	0.72	0.8

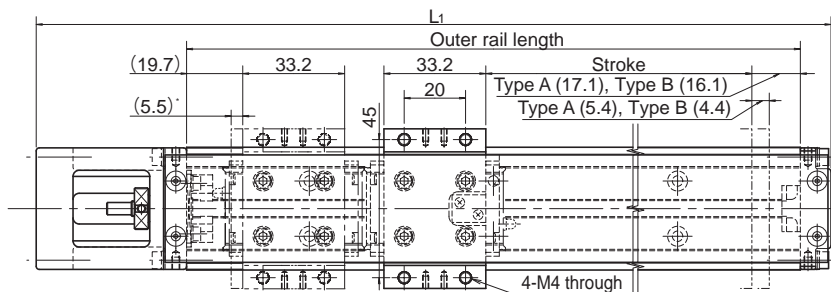
*Indicates a value when two inner blocks are in close contact with each other.

Model SKR20 (with a Cover)

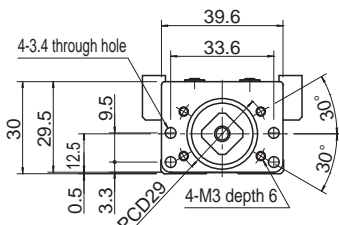
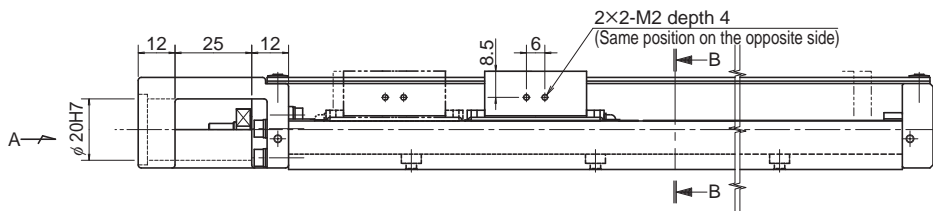
Model SKR20□□A (with a Single Long Nut Block)

Model SKR20□□B (with Two Long Nut Blocks)

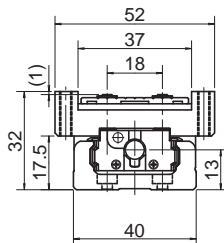
For model number coding, see **A2-28**.



* Distance between the mechanical stopper and the stroke starting position.



A arrow view



B-B cross section

Stroke (mm) (stroke between mechanical stoppers)		Outer rail length (mm)	Overall length L ₁ (mm)	G (mm)	n	Overall main unit mass (kg)	
Type A	Type B					Type A	Type B
30(40.9)	—	100	159	20	2	0.5	—
80(90.9)	35(44.9)	150	209	15	3	0.64	0.76
130(140.9)	85(94.9)	200	259	40	3	0.79	0.91

*Indicates a value when two inner blocks are in close contact with each other.