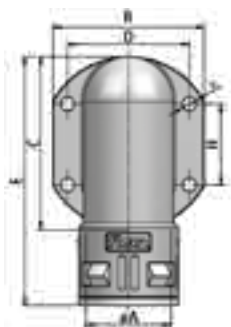


RQW-F

Kunststoff-Schnellverschraubung
Winkel 90°, Flanschanschluss
inkl. Flanschdichtung

Plastic connector, quick-type
elbow flange 90°
incl. flange-sealing

IP 68
-40°C ... +120°C



FLEXA No.	FLEXA No.	AD											kg	St.
schwarz	grau	OD	ø	øA	B	C	D	H	ø	øG	F	E	100	pcs.
black	grey		mm	mm	mm	mm	mm	mm	mm	mm	mm	mm		

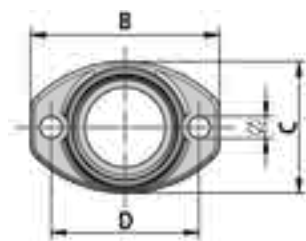
RQW-F		[IP 68]												
5020.077.216	5020.077.016	21,2	20,0	46,0	42,0	36,0	-	5,5	29,5	36,0	70,0	2,100	10	
5020.077.221	5020.077.021	28,5	27,0	65,5	61,0	53,0	-	6,6	37,0	45,0	88,0	5,200	10	
5020.077.229	5020.077.029	34,5	33,0	67,0	77,0	54,0	36,0	6,6	44,0	50,0	110,0	6,500	10	
5020.077.236	5020.077.036	42,5	38,0	85,0	84,5	73,0	30,0	6,6	52,0	64,5	104,0	7,800	10	
5020.077.248	5020.077.048	54,5	50,0	86,0	100,0	73,0	30,0	6,6	64,0	76,0	121,0	8,900	10	

RQF2-M

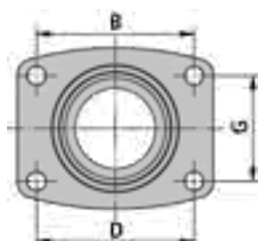
Kunststoff-Flansch
passend für alle metrischen
Verschraubungen mit
Außengewinde nach EN 60423

Plastic flange
suitable for all metric connectors
with outer thread acc. to EN 60423

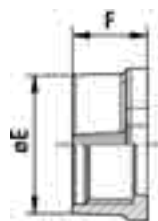
-40°C ... +120°C



Typ | type A



Typ | type B



FLEXA No.	FLEXA No.	Typ											kg	St.
schwarz	grau	type	B	C	D	G	ø	øE	H	F		100	pcs.	
black	grey		mm	mm	mm	mm	mm	mm	mm	mm				

RQF2-M		Metr. EN 60423											[IP 68]	
5020.071.225	5020.071.025	A	M 25 x 1,5	46	32	36	-	5,4	29,5	13,0	15,5	0,660	50	
5020.071.232	5020.071.032	A	M 32 x 1,5	63	46	52	-	6,6	37,0	16,5	19,0	1,480	25	
5020.071.240	5020.071.040	B	M 40 x 1,5	67	55	54	36	6,6	45,0	16,0	18,5	1,900	10	
5020.071.250	5020.071.050	B	M 50 x 1,5	86	64	73	30	6,6	55,0	17,0	20,0	2,500	10	
5020.071.263	5020.071.063	B	M 63 x 1,5	86	70	73	30	6,6	68,0	17,0	20,0	2,500	5	