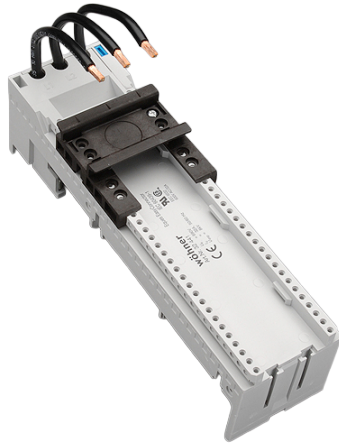


## busbar adapter 32 A



The picture may show a similar product.

### Description

Part No.: **32441 000**

EQUES 60Classic

busbar adapter 32 A

1 adjustable mounting rail

54 x 200, with leads AWG 10 (6 mm<sup>2</sup>)

for busbars 12, 15, 20, 25, 30 x 5, 10 and section busbars

### System

60Classic

### Advantages of the product

Conductor ends ultrasonically sealed.

Click mechanism when pushing onto the busbar.

Product group 05

Subgroup 21

pack size 4

EAN 4021267324414

ECLASS 14.0 27370304  
ETIM 5.0 EC001531  
ETIM 8.0 EC001531  
ETIM 10.0 EC001531

## Approvals

### Standards

IEC 61439-1:2020  
UL 508

### Approvals

CSA , UL , DNV GL



for UL feeder circuits >250V

type number: EEC6032-L  
EAC Type: EQ

UL file: E123577, UL category (for USA): NMTR <https://www.ul.com>  
UL file: E123577, UL category (for Canada): NMTR7 <https://www.ul.com>  
CSA file: 110285, CSA class: 3211-37 <https://directories.csa-international.org>  
CCC approval: no certification required

## Technical data

### Details IEC

#### Standards

IEC 61439-1:2020

#### Electrical data IEC

rated current (IEC): 32 A  
rated voltage (IEC) AC: 690 V

rated isolation voltage  $U_i$  AC: 800 V  
rated surge voltage  $U_{imp}$ : 6 kV

power dissipation of the article:

The power dissipation at a typical load of 80 % results to 1.5 W.

(The power dissipation at full load would be 2.4 W.)

### Supplementary data IEC

The following values have been verified with tests under certain conditions. Please ask Wöhner for this conditions before designing your panel.

min. permitted operation temperature -40°C

### Details UL

#### Standards

UL 508

for UL feeder circuits >250V

### Electrical data UL

rated current (UL): 30 A

rated voltage (UL) AC: 600 V

rated frequency (UL): 50 / 60 Hz

SCCR unprotected max.: 5 kA

3 cycles (without OPD) @ 600 V AC

SCCR protected max.: 65 kA

SCCR: 65 kA with any NKJH/7 Comb. Motor Controller type E 32 A / 480 V AC

65 kA with any DIVQ/7 circuit breaker 40 A / 480 V AC

### Mechanical data

W x H x D: 54 x 200 x 63

weight: 36.6 kg/100

poles: 3-pole

for busbars: 12, 15, 20, 25, 30 x 5, 10 and section busbars

### Terminal points

with leads

AWG10 (6 mm<sup>2</sup>)

wire stripping: 9 mm

## Material properties

halogen-free: Yes

## Application notes

There must be a clearance of at least 12 mm above the article to remove it from the busbar system.  
For compact mounting of complete motor circuits with commercially available switchgear and safe mechanical and electrical connection to the busbar system.

the short-circuit capacity of the combination of adapter and motor starter depends on the motor starter

for UL feeder circuits >250V

## Accessories

accessories for mounting



**32969 000**

mounting rail end stop  
for adjustable mounting rails

further accessories



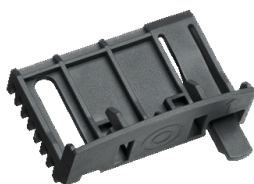
**32948 000**

mounting rail 54 mm  
for busbar adapters



**32963 000**

side-mounted module for busbar adapters  
attachable to both sides  
9 x 200  
for: EEC60..



**32953 000A**

positioning piece for Siemens S2  
for 45mm wide adapters with adjustable mounting rails

<https://pim.woehner.de/EN/INT/1000042747>