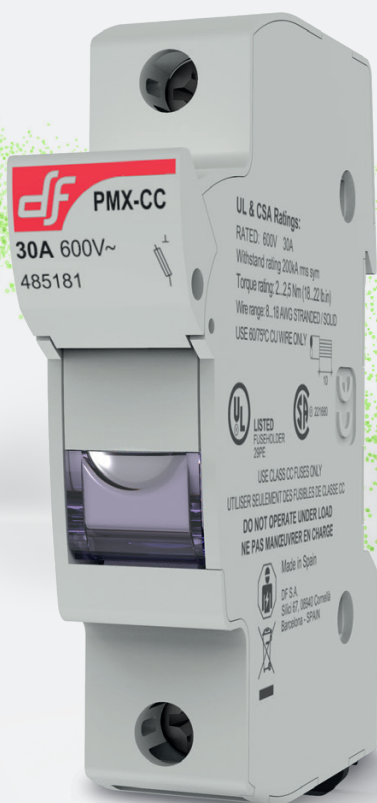


CYLINDRICAL

FUSE LINKS & FUSE HOLDERS/BASES



PMX CC

industrial modular fuse holders
for cylindrical fuse links

PMX

CC

**PROTECTING
THE WORLD**



PMX CC

industrial modular fuse holders
for cylindrical fuse links

CYLINDRICAL



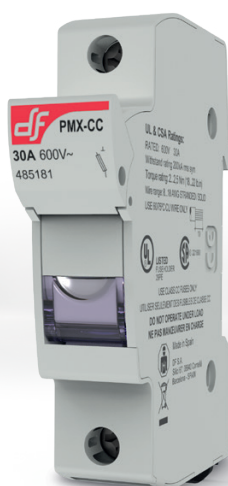
RATED CURRENT
30A

RATED VOLTAGE
600V AC/DC

MAXIMUM POWER DISSIPATION
4W

PROTECTION INDEX
IP20

STANDARDS
UL 4248-1
UL 4248-4
UL 486E
CSA C22.2 N° 4248-1
CSA 22.2 N° 65



**PATENTED
DESIGN**

Industrial modular fuse holders for cylindrical fuse links

Modular fuse holder for cylindrical fuse link size CLASS CC according
UL4248-4 standard.

Compact design, with reduced dimensions.

Ventilation zones optimized for a better heat dissipation.

Manufactured with a high quality materials

- Silver plated copper contacts.
- Plastic materials with high temperature resistance and self-extinguishable.
- All the materials are according to the European Directive RoHS.



Extended range of accessories is available.















UL certification (File E193529).
CSA certification (File 221680).



Accessories

REFERENCE	DESCRIPTION	PACKING Uni /BOX
480005	PINS FOR MULTIPOLE ASSEMBLY	12/300
485050	HANDLE TIES FOR MULTIPOLE ASSEMBLY	12/300
485051	LOCK ACCESSORY	5
485052	SPECIAL IP20 PROTECTION ACCESSORY	24
485053	PHASE SEPARATOR ACCESSORY	12
485054	FUSING NEON INDICATOR REPLACEMENT	6
485656	SCREWS PROTECTION ACCESSORY	20

Range

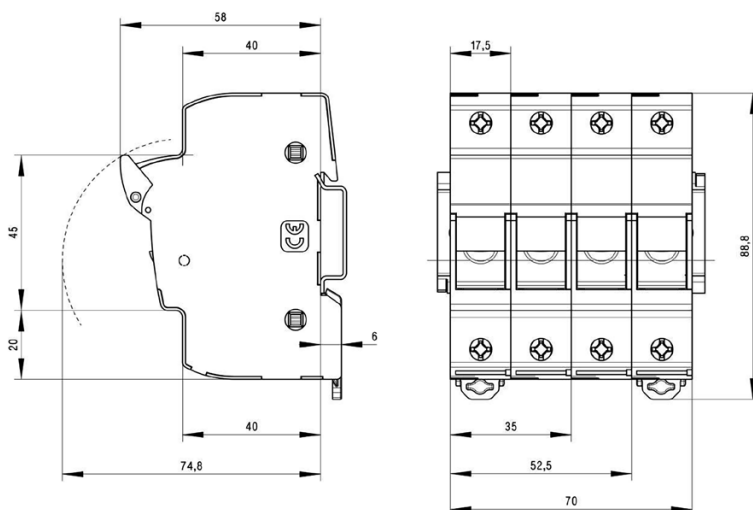
U _n	REFERENCE		POLES	MODULES	PACKING
	WITHOUT INDICATOR	WITH INDICATOR			Uni /BOX
					
600V	485181  	485188  	1P	1	12/180
	485184  	485190  	2P	2	6/90
	485185  	485191  	3P	3	6/90

Technical data

Rated current	30A	
Rated voltage	600V AC/DC	
Rated power dissipation	3W	
Maximum power dissipation	4W	
Dielectric strength	2200V	
Protection index *	IP20	
Ambient temperature of service	-40°C ... 70°C (with carrier operation) -50°C ... 80°C (without carrier operation)	
Storage temperature	-50°C ... 80°C	
Derating by number of poles	POLES	I _{MAX}
	1 ... 4	I _N
	5 ... 6	0,8 x I _N
	7 ... 9	0,7 x I _N
	≥ 10	0,6 x I _N
Correction of the admissible current in function of the temperature	20° C	1
	30° C	0,95
	40° C	0,90
	50° C	0,80
	60° C	0,70
	70° C	0,60

* For wires of section ≤ 6mm² is necessary the use of the accessory to guarantee IP20 in clamps zone. ► **FIG. 4**

Dimensions



Weight

1P	57gr
2P	114gr
3P	171gr

Weight without packing

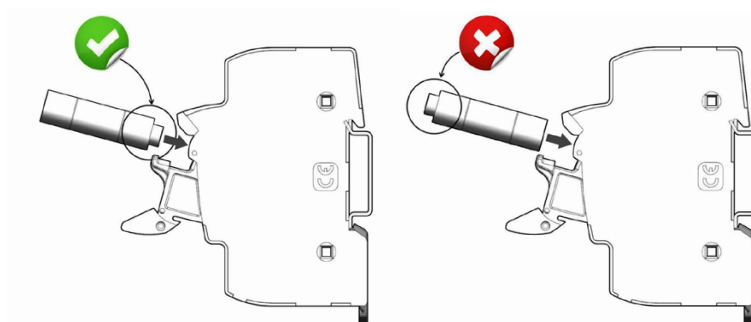
Standards

UL4248-1 Fuse holders
UL4248-4 Fuse holders
UL486E Wiring terminals
CSA C22.2 N° 4248-1 Fuse holder assemblies
CSA 22.2 N° 65 Wire connectors

Certifications



Fuse link position



Correct use position of the fuse link

PMX CC fuse holder is designed to not allow to use the fuse link in this position

Application characteristics


For mounting on DIN/EN standard rail

DIN 46277/1-3 (EN50022)
Clip fixation with 2 positions

Screw fixation

Available with accessory
► **FIG. 7**

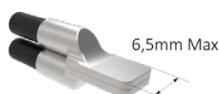
Connecting wire
Copper wires only

WIRES	METRIC	AWG	WIRING
1	0,75...16mm ² Solid / Stranded	8....18 AWG Solid / Stranded	
2	0,75...10mm ² Solid	8....18 AWG Solid	
Same cross section and type	0,75...6mm ² Stranded	10....18 AWG Stranded	

Wire-end terminals

The use of wire-end terminals may allow to increase the connecting wire section.

Wire-end terminals recommended mounting:



The use of wire-end terminals could not guarantee the IP20 protection degree.

Ferrules

It's recommended use of ferrules in wires with section ≤ 2,5mm²



The product is delivered with the terminals opened and ready to connect

Tightening torque on terminals

2...2,5 Nm
18...22 lb.in

Screws with a combined head

SLOT + PZ2

Multipolar assembly

► **FIG. 1**

Fuse holders with fuse indicator

NEON LAMP
120...600V AC

Special zone for sealing

Ø1,5 mm wire

Label holder for a better circuit identification

► **FIG. 2**
Suitable size for label: 11x9 mm

Accessory available to lock the fuse holder by a padlock

► **FIG. 3**
(max. 3 padlocks of Ø 3mm)

Accessories

FIG. 1 | Multipolar assembly

Standard system by DF, 3 clips and 1 pin for each union between poles

480005

PINS FOR MULTIPOLE ASSE

485050

HANDLE TIES FOR MULTIPOLE ASSEMBLY

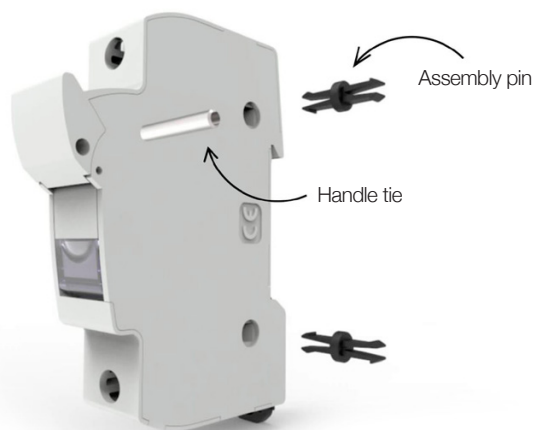
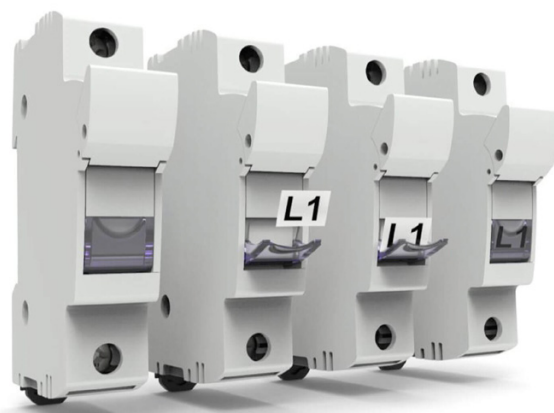


FIG. 2 | Identification by label

Open the label holder part with the fuse holder closed, put on the label and close it



Label measures **11x9mm**



Accessories

FIG. 3 | Lock of the fuse holder

Systems to avoid the operation and connection when the fuse holder is open or closed

485051 LOCK ACCESSORY

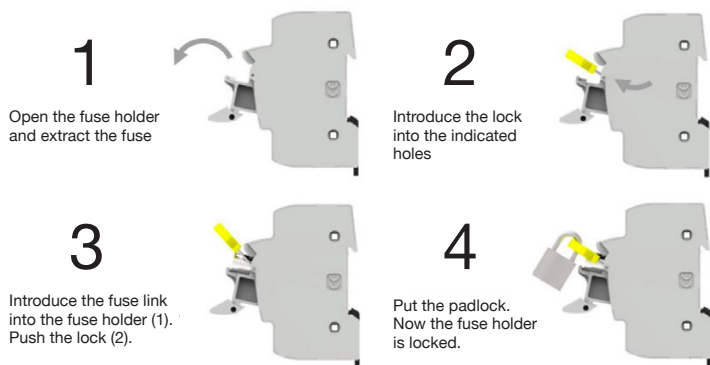
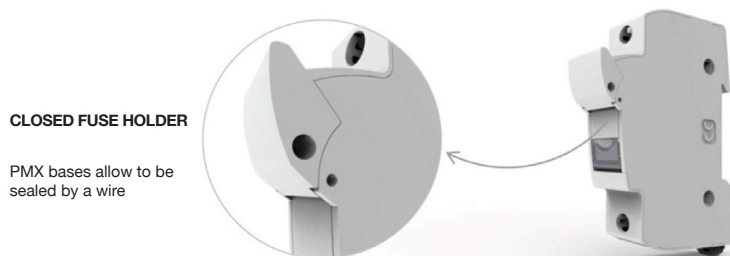


FIG. 4 | Special IP20 protection

The accessory must be positioned in the wire entries, if it's necessary to achieve the IP20 degree of protection with thin wires

485052 SPECIAL IP20 PROTECTION ACCESSORY

Manual assembly



To obtain an IP20 rating with cable protection of $\varnothing \leq 4.5\text{mm}$, use the special protection accessory

FIG. 5 | Phase separator accessory

The accessory increases the distance between phases in multipolar assemblies

485053 PHASE SEPARATOR ACCESSORY





Accessories

FIG. 6 | Screws protection accessory

Protection accessory to avoid the screws manipulation and improve the protection degree

485656 SCREWS PROTECTION ACCESSORY

Manual assembly



FIG. 7 | Screw fixation accessory

First mount the accessory with screws, then mount the fuse holder (there are available different accessories depending on the number of the fuse holder)

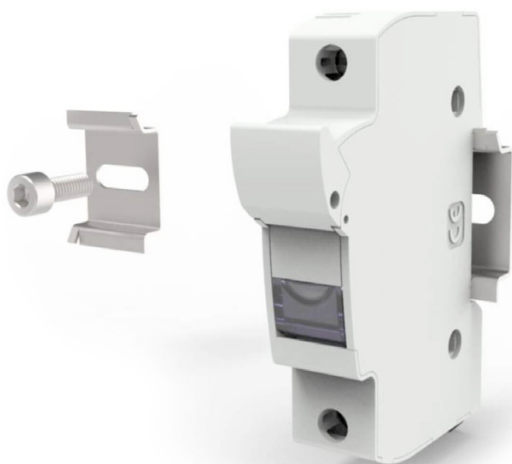


FIG. 8 | Fusing indicator replacement instructions

485054 FUSING NEON INDICATOR REPLACEMENT

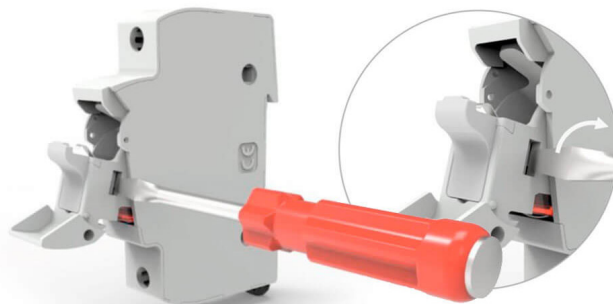
1

Open the fuse holder



2

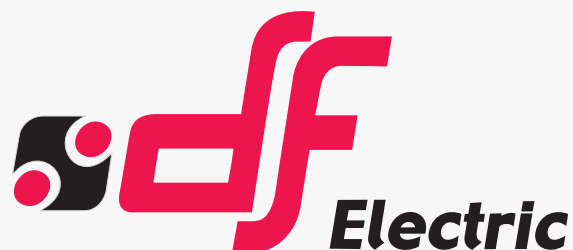
Using a flat screwdriver, remove the cover with a slight rotation of the tool



3

Replace the fusing indicator. Enter the cover on the handle with a slight angle





PROTECTING THE WORLD

HEAD OFFICE AND FACTORY

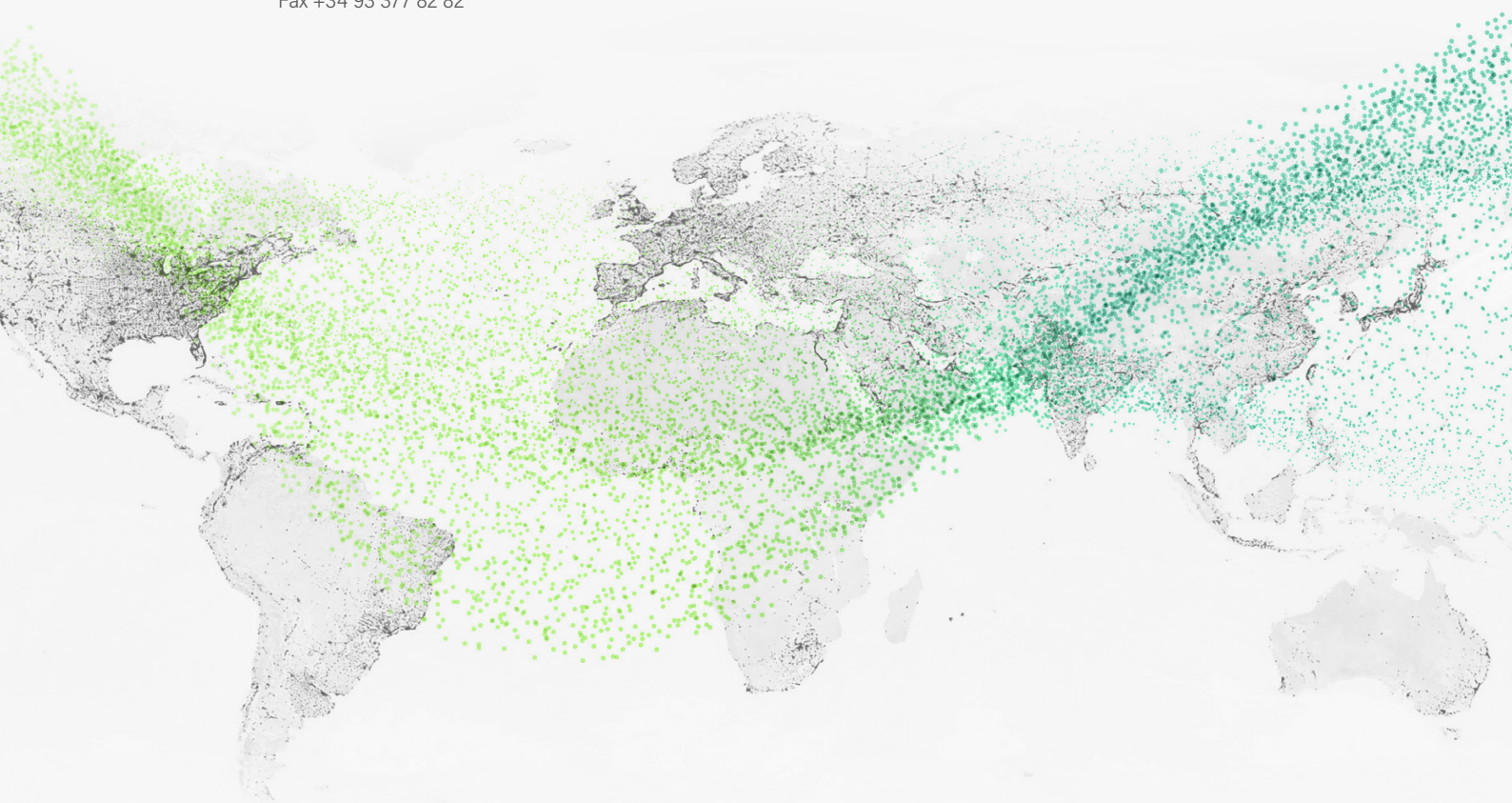
SILICI, 67-69
08940 CORNELLA DE LLOBREGAT
BARCELONA · SPAIN
Tel. +34 93 377 85 85
Fax +34 93 377 82 82

INTERNATIONAL SALES

Tel. +34 93 475 08 64
Fax +34 93 480 07 75
export@dfelectric.es

NATIONAL SALES

Tel. 93 475 08 64
Fax 93 480 07 76
comercial@dfelectric.es



dfelectric.es



According to the waste of electrical and electronic equipment directive, electrical material should not be part of the usual waste. This symbol alerts users that these products should be recycled according to local environmental waste disposal regulations.



The "electro technical expert" logo marked on the products included in this data sheet indicates that the installation of these products must be carried out by expert personnel with specialized knowledge.



To prevent electrical hazards, carry out the installation without voltage.



Safety notice
Please capture the following QR code and read our safety notice carefully before installing our products.



The data reflected in this technical record are subject to the correct installation of the product in accordance with manufacturer's instructions, relevant installation standards and professional practices, maintained and used in applications for which they were made.

The products described in this document have been designed, developed and tested in accordance with specific standard. They are considered components that are integrated as part of installation, machine or equipment. The correct general operation of the referred product is responsibility of the manufacturer of the installation, machine or equipment.

DF ELECTRIC cannot guarantee the characteristics of an installation, machine or equipment that has been designed by a third party. Once a product has been selected, the user must verify that it is appropriate for its application, through the verifications and/or tests that it deems appropriate.

DF ELECTRIC retains the right to change the dimensions, specifications, materials or design of its products at any time with or without notice.

©2022 DF Electric. All rights reserved