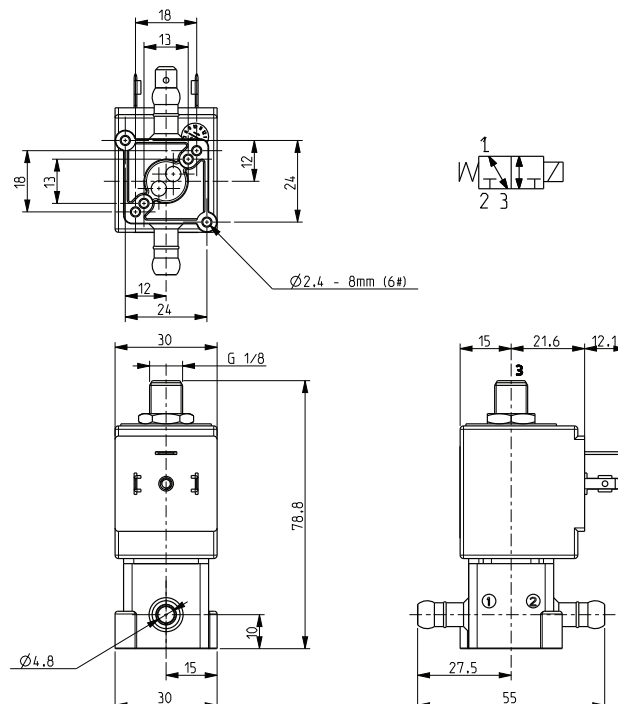


SERIES
L323-V04G



Suitable to shut off liquid and gaseous fluids; suitable for low pressure steam and applications in sterilising autoclaves (verify the compatibility of fluid with materials in contact).

Technical Features	
Maximum allowable pressure (PS)	10 bar
Opening time	~20ms
Closing time	~20ms
Fluid temperature	0°C +130°C
Max viscosity	5°E (~37 cStokes or mm²/s)

Materials in Contact with Fluid	
Body	PPS
Sealing	FPM
Internal components	Stainless steel
Seat	PPS
Guide assembly	Stainless steel
Shading ring	Copper

Coil		
Approval		UL (class F) – for UL cl.H: ZA34 (E153691)
Continuous duty		ED 100%
Encapsulation material		PPS (Polyphenilsulfure) fiberglass reinforced
Insulation class		F (155°C) on request class H (180°C)
Ambient temperature		-10°C +50°C
Electric connections		DIN 46340 - 3 poles connectors (EN175301-803)
Protection degree		IP 67 (EN 60529) with plug connector
Voltages	DC	ZA10G: 12-24V (+10% -5%)
	AC	ZA10A: 24V/50Hz - 110V/50Hz (120V/60Hz) - 230V/50Hz (+10% -15%)
		(Other voltages and frequencies on request)

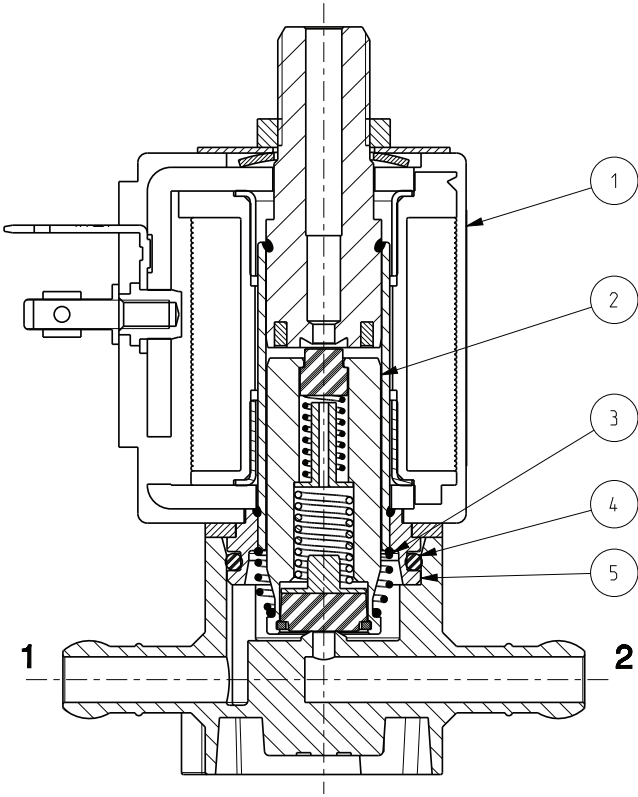
Port size	Orifice size (mm)	Differential pressure (bar)				Kv (m³/h)	Series and type		Power absorption			Sealings	Notes	Weight (kg)	
		Δp min	Δp max						AC (VA)		DC (W)				
			Gases		Liquids		Inrush	Holding							
			AC	DC	AC				DC						
Barbed ports	2,3	0	4	-	4	-	0,2	L323V04G	ZA10A	23	14	-	FPM	1 - 2	0,230
			-	4	-	4			ZA10G	-	-	12			

2 - The pressure values shown in the table refer to the potential of the valve: they can be lower depending on the connection system used

SERIES
L323-V04G

ASCO™ SOLENOID VALVE
3/2 U (UNIVERSAL SERVICE) – DIRECT ACTING - BARBED PORTS

Spare Parts



Kit description	Kit P.N.	Consisting of:
Core kit	G3065101	Core pos. 2
Core return spring kit	G3022401	N.10 core return spring pos. 3
O-Ring guide assembly kit	GU2428000017	N.10 O-Ring guide assembly pos. 4
Guide assembly	290564-001R	Guide assembly pos. 5
Coil	ZA10A ZA10G	Coil pos. 1

Installation

- Solenoid valve can be mounted in any position; vertical with coil upwards preferred.
- In case of disassembling for usual maintenance, the fixing screws of the guide assembly have to be tightened with 0,6÷0,7 Nm torque.

THE VALIDITY OF REPORTED DATA IS REFERRED TO THE DATE OF ISSUE. POSSIBLE UPDATES ARE AVAILABLE ON REQUEST