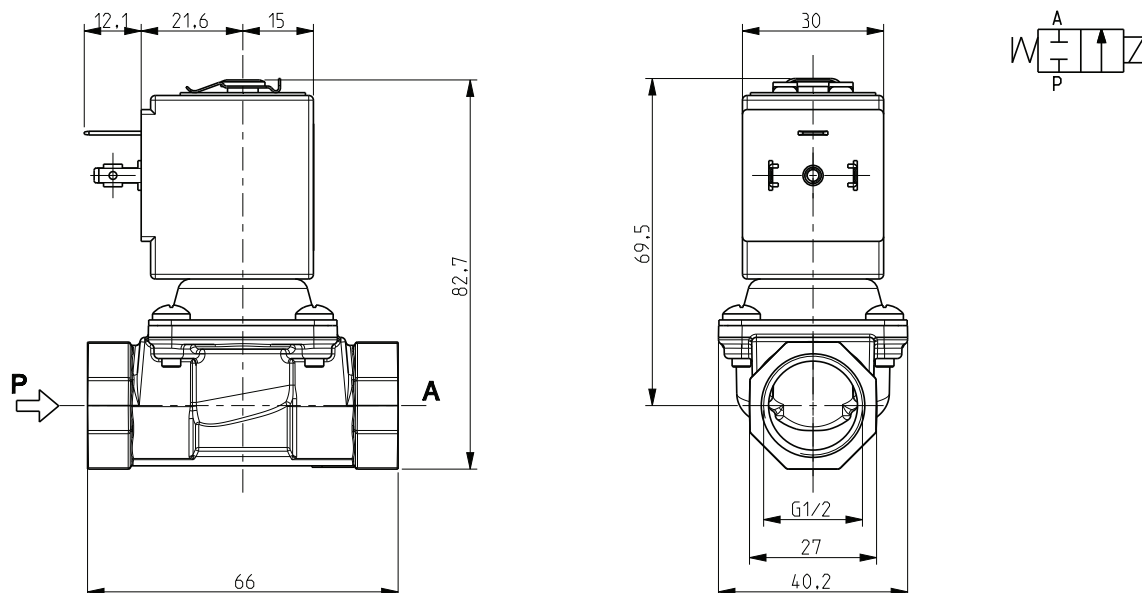


# ASCO™ SOLENOID VALVE

## 2/2 NORMALLY CLOSED – DIRECT ACTING - G1/2

**SERIES**  
**L113**



### General Features

Direct acting solenoid valve with full orifice, for low pressure.

Suitable to shut off liquid and gaseous fluids (verify the compatibility of fluid with materials in contact).

Technical Features	
Maximum allowable pressure (PS)	2 bar
Opening time	~30ms
Closing time	~30ms
Fluid temperature	0°C +130°C
Max viscosity	5°E (~37 cStokes or mm²/s)

Materials in Contact with Fluid	
Body	Brass
Sealing	FPM
Internal components	Stainless steel and brass
Seat	Brass
Core tube	Stainless steel
Shading coil	Copper

Coil		
Approval	UL (Class F) – for UL cl. H: ZA34 (E153691)	
Continuous duty	ED 100%	
Encapsulation material	PPS (Polyphenylsulfure) fiberglass reinforced	
Insulation class	F (155°C) on request class H (180°C)	
Ambient temperature	-10°C +50°C	
Electric connections	DIN 46340 - 3 poles connectors (EN175301-803)	
Protection degree	IP 67 (EN 60529) with plug connector	
Voltages	DC	12-24V (+10% -5%)
	AC	24V/50Hz - 110V/50Hz (120V/60Hz) - 230V/50Hz (+10% -15%) (Other voltages and frequencies on request)

Port size ISO 228	Orifice size (mm)	Differential pressure (bar)				Kv (m³/h)	Series and type		Power absorption			Sealings	Notes	Weight (kg)
		Δp min	Δp max						AC (VA)		DC (W)			
			Gases		Liquids		Inrush	Holding						
			AC	DC	AC				DC					
G 1/2	12	0	0,30	-	0,30	-	L113V22	ZA10A	23	14	-	FPM	1	0,390
			-	0,20	-	0,20	L113V23		-	-	9		1 - 2	

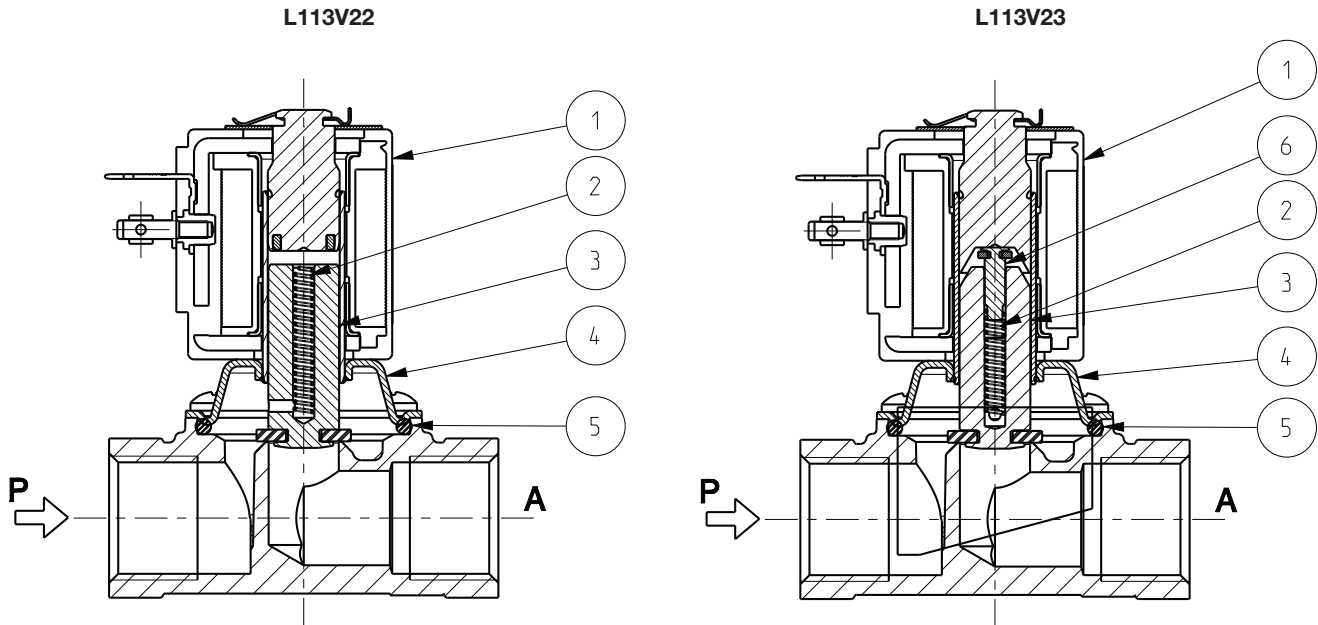
### Notes

- Sealings : FPM = Fluoro-carbon elastomer
- 1 - IMQ CSV approval, see ZA10 datasheet for further details
- 2 - Silent model; only for direct current (DC).

SERIES  
**L113**

**ASCO™ SOLENOID VALVE**  
2/2 NORMALLY CLOSED – DIRECT ACTING - G1/2

Spare Parts



Kit description	Model	Kit P.N.	Consisting of:
Core kit	L113V22	3127802	Core pos.3 Core return spring pos.2 OR guide assembly pos. 5 Pushing-pin pos. 6 (L113V23)
	L113V23	3127902	
Guide pipe assembly kit	L113V22	G31520	Guide pipe assembly pos. 4 Coil clip
	L113V23	G31521	OR guide assembly pos. 5
Coil		ZA10A	Coil pos. 1

Installation

- Solenoid valve can be mounted in any position; vertical with coil upwards preferred.

THE VALIDITY OF REPORTED DATA IS REFERRED TO THE DATE OF ISSUE. POSSIBLE UPDATES ARE AVAILABLE ON REQUEST