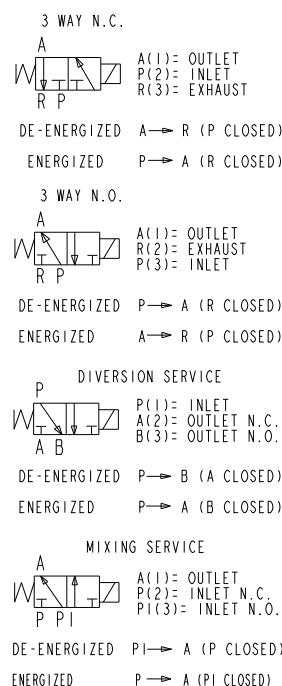
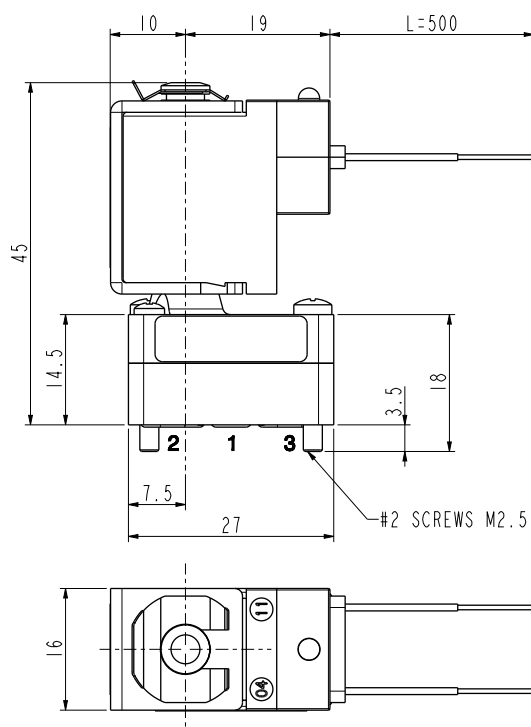


**ASCO™ SOLENOID VALVE - DRY**

3/2 UNIVERSAL SERVICE - DIRECT ACTING - TOTAL ISOLATION - SUB-BASE

**General Features**

Total isolation micro solenoid valve: the actuator is totally isolated from the fluid so that the wetted parts are just the body and the diaphragm.

Reduced internal volume: 67µl. Possibility of disassembling for inspection.

The parts subject to sliding friction are duly coated by PTFE (polytetrafluoroethylene) based self lubricating material.

Suitable to shut off liquid and gaseous fluids (verify the compatibility of fluid with materials in contact).

Technical Features	
Maximum allowable pressure (PS)	3 bar
Opening time	~30ms (~50ms with vacuum)
Closing time	EPDM ~30ms (~50ms with vacuum) FPM ~60ms (~50ms with vacuum) FFPM ~90ms (~50ms with vacuum)
Fluid temperature	-10°C +60°C
Max viscosity	5°E (~37 cStokes or mm²/s)

Materials in Contact with Fluid	
Body	PEEK (Polyketones)
Sealing	EPDM or FPM or FFPM

Coil	
Continuous Duty	ED 100%
Encapsulation material	PA (polyamide) fiberglass reinforced
Yoke	External in zinc plated steel
Insulation class	F (155°C)
Ambient temperature	-10°C +60°C
Electric connections	N° 2 wires AWG 24
Protection degree	IP 66 (EN 60529)
Voltages	DC 24V (+10%; -5%) (Other voltages on request)

Port size ISO 228	Orifice size (mm)	Differential pressure (bar)					Kv (m³/h)	Series and type		Power absorption		Sealings	Notes	Weight (kg)
		Δp min	Δp max							DC (W)				
			Gases		Liquids			Inrush	Holding					
			AC	DC	AC	DC								
Sub-base	1,5	0	-	2,4	-	2,4	0,03	D351D10G D351V10G D351Z10G	ZE37M	8	1,5	EPDM FPM FFPM	1 - 2	0,040

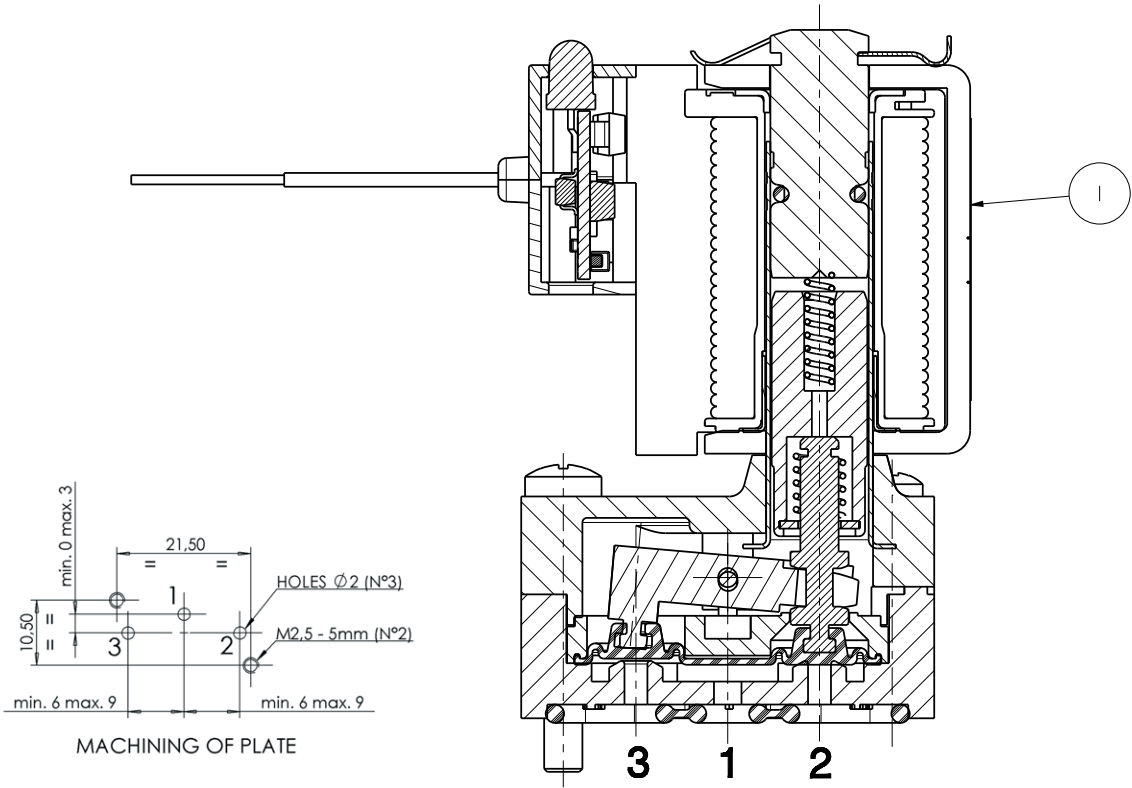
**Notes**

• Sealings: EPDM = Ethylene-propylene elastomer FPM = Fluoro-carbon elastomer FFPM = Perfluorate elastomer

1 - Suitable for vacuum at any port up to 730mmHg

2 - Coil with PWM power supply system: inrush power absorption 8W for 200 ms. Equipped with red LED for power supply signal.

Spare Parts



Kit description	Kit P.N.	Consisting of:
Coil	ZE37M	Coil pos. 1

Installation

- Solenoid valve can be mounted in any position.
- Valves delivered with sealing O-rings.
- M2,5 screws for sub-base mountings have to be tightened at torque between 0,8 and 1,2 Nm.

THE VALIDITY OF REPORTED DATA IS REFERRED TO THE DATE OF ISSUE. POSSIBLE UPDATES ARE AVAILABLE ON REQUEST