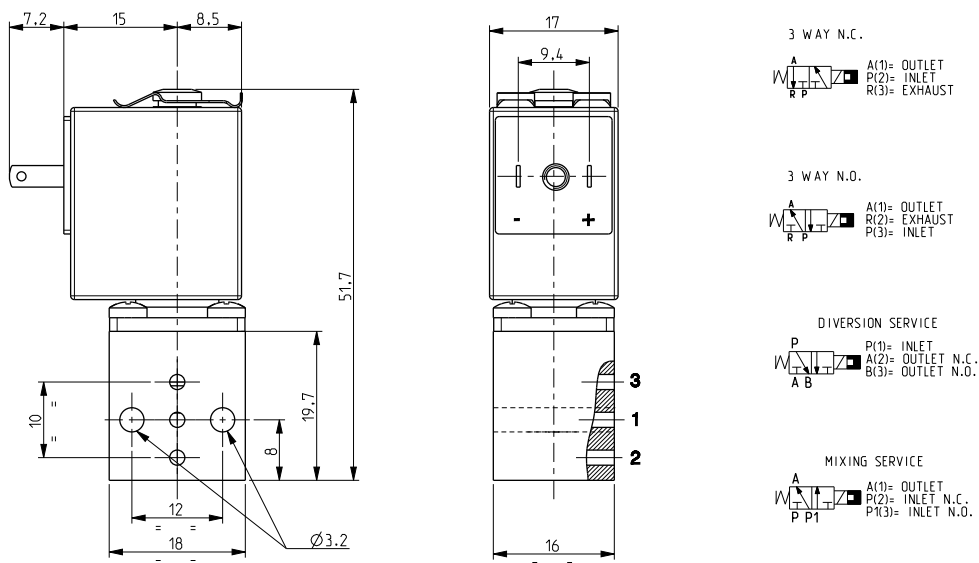


# ASCO™ MICRO SOLENOID VALVE

3/2 - UNIVERSAL SERVICE - DIRECT ACTING - SUB-BASE MOUNTING

**SERIES**  
**V367**



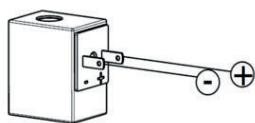
### General Features

Direct acting micro solenoid valve; minimum overall dimensions.  
 Suitable for mounting on a sub-base or directly on the equipment.  
 Valve delivered with sealing O-rings.  
 Suitable to shut off liquid and gaseous fluids (verify the compatibility of fluid with materials in contact).

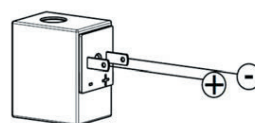
| Technical Features              |                          |
|---------------------------------|--------------------------|
| Maximum allowable pressure (PS) | 16 bar                   |
| Opening time                    | from ~5ms to ~10ms       |
| Closing time                    | from ~5ms to ~10ms       |
| Fluid temperature               | -10°C +90°C              |
| Max viscosity                   | 3°E (22 cStokes o mm²/s) |

| Materials in Contact with Fluid |                                                 |
|---------------------------------|-------------------------------------------------|
| Body                            | Brass                                           |
| Sealing                         | NBR                                             |
| Internal components             | Brass, PEI (Polyetherimide) and stainless steel |
| Seat                            | Brass                                           |
| Core tube                       | Brass                                           |

| Coil                   |                                                       |
|------------------------|-------------------------------------------------------|
| Duty                   | Latching model, polarized type, operating by impulses |
| Min energizing time    | 20ms                                                  |
| Max energizing time    | 50ms                                                  |
| Encapsulation material | PP-V0 (self-extinguishing polypropylene)              |
| Insulation class       | A (105°C)                                             |
| Ambient temperature    | -10°C +60°C                                           |
| Electric connections   | DIN 46340 - 3 poles micro plug connector              |
| Protection degree      | IP 65 (EN60529) with micro plug connector             |
| Voltages               | DC 6-12V (+10% -10%)<br>(Other voltages on request)   |



3 WAY N.C. : P→A (R CLOSED)  
 3 WAY N.O. : A→R (P CLOSED)  
 DIVERSION SERVICE : P→A (B CLOSED)  
 MIXING SERVICE : P→A (P1 CLOSED)



3 WAY N.C. : A→R (P CLOSED)  
 3 WAY N.O. : P→A (R CLOSED)  
 DIVERSION SERVICE : P→B (A CLOSED)  
 MIXING SERVICE : P1→A (P CLOSED)

| Port size | Orifice size (mm) | Δp min | Differential pressure (bar) |    |         |    | Kv (m³/h) | Series and type |       | Power absorption |         |        | Sealings | Notes | Weight (kg) |
|-----------|-------------------|--------|-----------------------------|----|---------|----|-----------|-----------------|-------|------------------|---------|--------|----------|-------|-------------|
|           |                   |        | Δp max                      |    |         |    |           | Valve           | Coil  | AC (VA)          |         | DC (W) |          |       |             |
|           |                   |        | Gases                       |    | Liquids |    |           |                 |       | Inrush           | Holding |        |          |       |             |
| -         | 1,2               | 0      | AC                          | DC | AC      | DC | 0,04      | V367B01G        | Z070A | -                | -       | 3      | NBR      | 1     | 0,090       |

### Notes

- These micro-solenoid valves are not suitable for stagnating media subject to vaporization which deposit solid, calcareous, incrusting residues or similar.
- Sealings: NBR = Nitrile-butylene elastomer.
- 1 - If used as NO only, the maximum operating pressure is 6 bar.

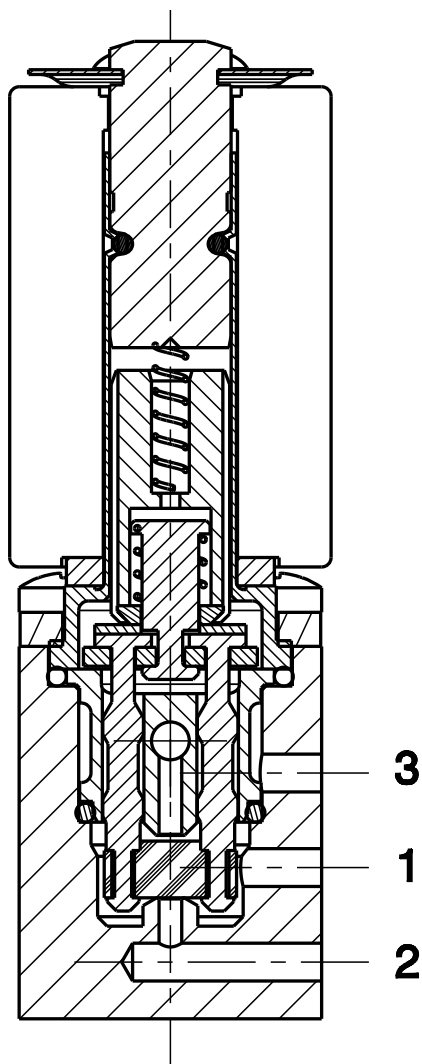
LATCHING MODEL

SERIES  
**V367**

# ASCO™ MICRO SOLENOID VALVE

3/2 - UNIVERSAL SERVICE - DIRECT ACTING - SUB-BASE MOUNTING

Sectional View



### Installation

- Solenoid valve can be mounted in any position; vertical with coil upwards preferred.
- In case of disassembly for maintenance, it is important that the solenoid valves be reassembled with the respective components. An eventual exchange of components (the coil included) between different valves can compromise its operation. The potential replacement of the coil should necessarily be made in factory.

THE VALIDITY OF REPORTED DATA IS REFERRED TO THE DATE OF ISSUE. POSSIBLE UPDATES ARE AVAILABLE ON REQUEST