

SFC Series

Flexible Coupling

'SI. CO' mark(Trademark : 40-2012-0061376) indicates that the authenticity is certified.

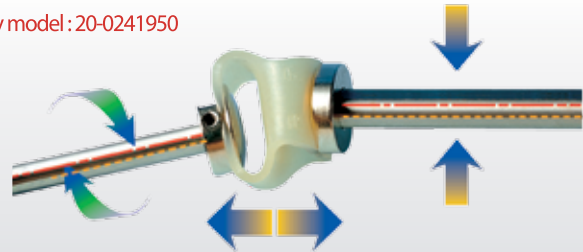


2006 Venture Design Award

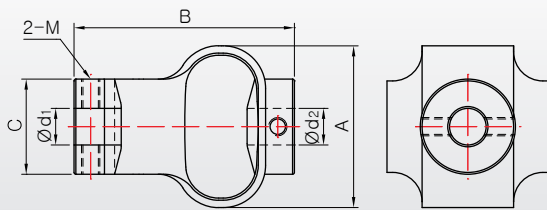
Features

- Excellent absorbability in misalignment (eccentricity, angular misalignment, end-play)
- Absorbs impact and vibration
- No lubrication
- Low moment of inertia

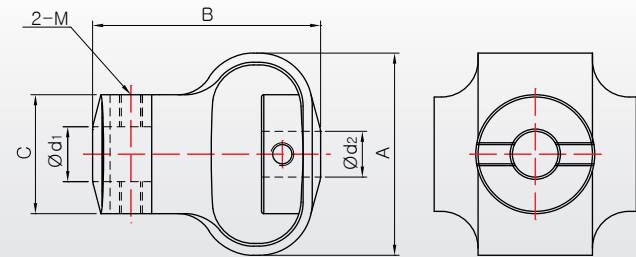
※ Patent /Utility model : 20-0241950



SFC 29, 38



SFC 48, 54



Dimensions & Performance

| Product Number | Dimension (mm)(±0.3) | | | Fastening Bolt M | Fastening Torque (N · m) | Mass (g) | Max. RPM (min ⁻¹) | Max Torque (N · m) | Permissible Angular misalignment (°) | Permissible Parallel misalignment (mm) | End-Play (mm) |
|----------------|----------------------|----|------|------------------|--------------------------|----------|-------------------------------|--------------------|--------------------------------------|--|---------------|
| | A | B | C | | | | | | | | |
| SFC-29 | 25 | 28 | 18 | M4 | 1.7 | 19 | 3,000 | 0.35 | 10 | 2 | 1.5 |
| SFC-38 | 32 | 35 | 22.5 | M4 | 1.7 | 38 | 3,000 | 1.35 | 10 | 2.5 | 2 |
| SFC-48 | 43 | 50 | 26 | M5 | 4 | 60 | 3,000 | 1.8 | 12 | 2.5 | 2 |
| SFC-54 | 50 | 59 | 29.5 | M6 | 7 | 140 | 3,000 | 4.5 | 12 | 3 | 2 |

Standard Inner diameter

| Product Number | Standard Inner diameter (d ₁ , d ₂) Standard INNER Diameter (mm) | | | | | | | | |
|----------------|---|---|---|---|----|----|----|----|----|
| | 4 | 5 | 6 | 8 | 10 | 12 | 14 | 15 | 16 |
| SFC-29 | ● | ● | ● | ● | ● | | | | |
| SFC-38 | | | ● | ● | ● | ● | | | |
| SFC-48 | | | | ● | ● | ● | ● | | |
| SFC-54 | | | | | ● | ● | ● | ● | ● |

※ Please contact us when you order a product which is not a standard inner diameter

How to order product



※ For INNER diameter, key type is not available for SFC type

※ Please mark each inner diameter size.

※ Please contact us when you order