

CORNER HINGE 180°

Corner hinge for surface mounted doors. Frame part is mounted, using one screw from the inside. The door part is attached to the door and the pin is inserted into the hinge. Universal left and right mounting.

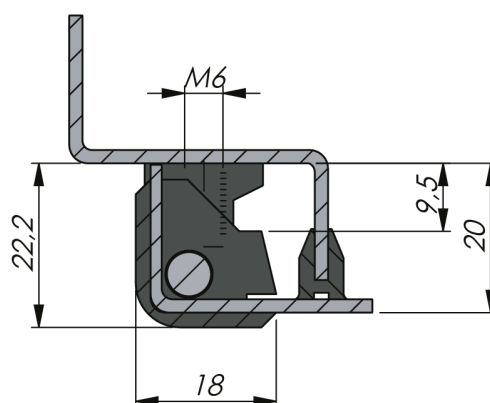
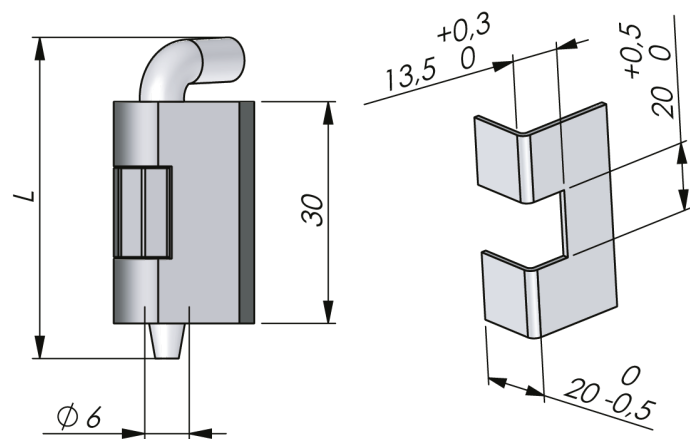
For plate thickness 1,8 -2,25 mm.



MATERIAL

Hinge: Zinc die cast, chrome plated, black texture powder coated or black chromated

Pin: Steel, zinc plated



P/N	Surface treatment	Pin L = mm
321234	Black chromated	70
321235	Black chromated	43
321334	Chrome	70
321335	Chrome	43
321634	Black powder coated	70
321635	Black powder coated	43