

VECTOR T1 HANDLE



Flush T-handle with a 4 mm compression stroke, in zinc or stainless version. Bolts are moulded into the dish for mounting with nuts on the inside. The Vector T-handle features two independent locking systems: key-locking cylinder and retractable padlock loop (Ø 8 mm) which prevents the handle being lifted or turned. Handle rotation 90° right, 90° left or 180°. Five different cam versions available and the handle is supplied with cylinder dust-cover. Protection degree IP65.

On request the handle can be supplied with a separate, unassembled cylinder. This will simplify handling and enable smooth adaptation to different key combinations for various needs.



MATERIAL

Adjustable cam: Zinc die cast, passivated

Body: Glass fibre reinforced polyamide (PA6GF30)

Cast-in bolts: Steel, zinc plated

Cylinder: Zinc die cast, stainless steel 304 cap and dust shutter

Handle: Zinc die cast, chrome plated, black texture powder coated or stainless steel 304, plain or black texture powder coated

Fixed cam: Steel, zinc plated

Padlock loop: Stainless steel 304

Roller: Glass fibre reinforced polyamide (PA6GF30)

Shaft: Steel, zinc plated or stainless steel 303

RELATED PRODUCTS

Rods: 2-540, 2-541, 2-545

Rod guides: 2-560, 2-570

Rod adapters: 2-541

Similar products: 2-800, 2-820, 2-815, 2-811

Use the Index Code at industrilas.com

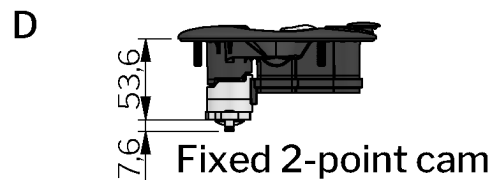
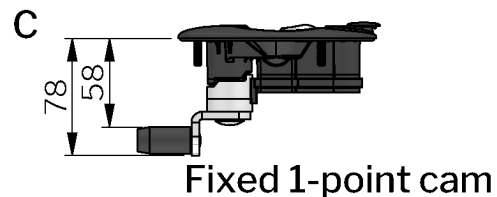
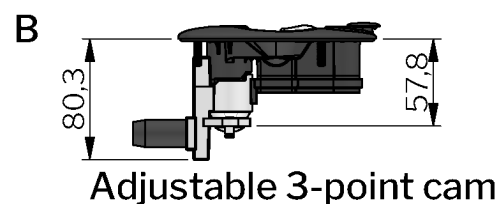
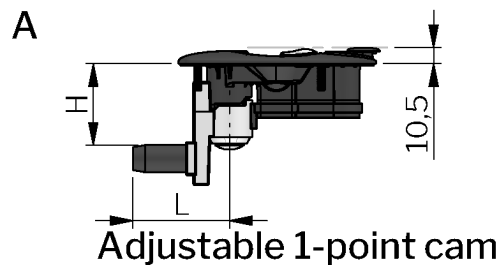
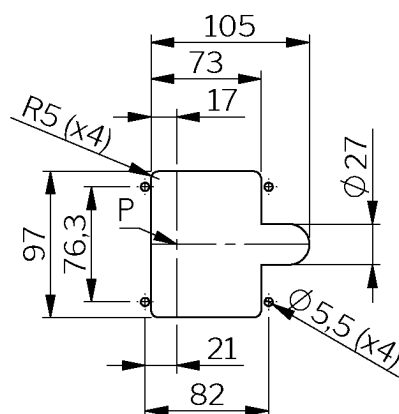
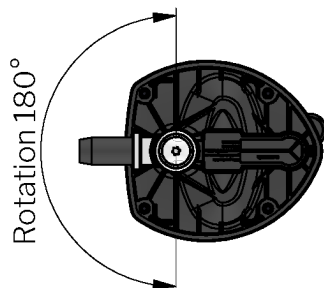
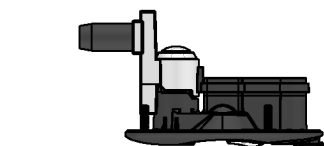
TECHNICAL INFORMATION

Key extraction: Open / Closed

Cylinder information: Supplied with two keys

Maximum tightening torque 2,2 Nm.

Standards: IP65, DIN EN 61373



Industrilas
— When access counts —

A product number is created by combining the figures in each column (AAAAAA-BBCDDDDD)

| AAAAAA | Handle / Shaft | Handle | BB Cylinder | C Opening rotation | DDDDD Cam | H= | L= | Drawing |
|--------|----------------|--------|--------------------|-------------------------|---------------------------------------|-------|----|-----------|
| 272063 | Zinc / Steel | Black | 06 Keyed alike 751 | H 90° clockwise | 5861 * Fixed roller cam | 58 | 61 | C |
| 272363 | Zinc / Steel | Chrome | 52 Keyed to differ | V 90° counter-clockwise | S5400 Two-point cam | - | - | D |
| 273063 | SS 304 / 303 | Black | 68 Keyed alike 805 | - 180° | S6685 * Fixed three-point roller cam | 66 | 85 | Not shown |
| 273963 | SS 304 / 303 | Plain | 69 Keyed alike 810 | | S Adjustable three-point roller cam | 15-60 | 61 | B |
| | | | 70 Keyed alike 815 | | S1 Adjustable single point roller cam | 15-60 | 61 | A |
| | | | 71 Keyed alike 820 | | | | | |
| | | | 72 Keyed alike 825 | | | | | |
| | | | 73 Keyed alike 830 | | | | | |
| | | | 74 Keyed alike 835 | | | | | |
| | | | 75 Keyed alike 840 | | | | | |
| | | | 76 Keyed alike 845 | | | | | |
| | | | 77 Keyed alike 850 | | | | | |
| | | | 78 Keyed alike 455 | | | | | |

* Other dimensions on request.