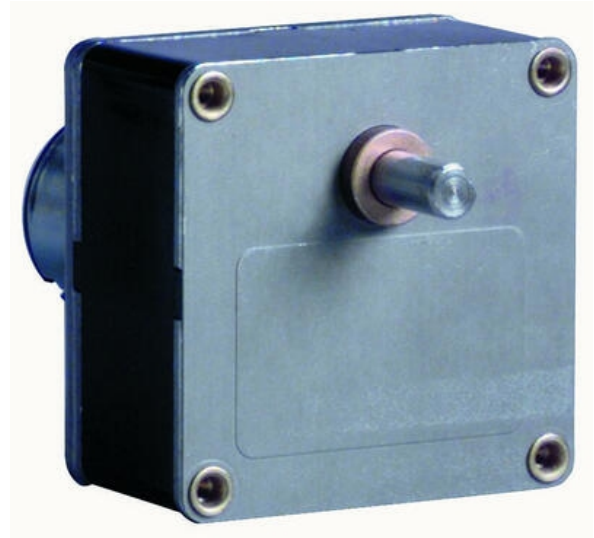


## CROUZET - 82867XXX DC MOTOR WITH SPUR GEARBOX - INDUSTRIAL DC SERIES

82867XXX  
Spur RC65 gearmotor, 3W, 12/24Vdc, 1.7rpm?344rpm, 5Nm max

- 12 - 24 V dc, 5 Nm max, 3 W
- Speed range: 1.7 to 344 rpm
- High starting torque
- Compact, inline gear motor



### PRODUCT DESCRIPTION

Crouzet standard industrial DC motor with inline gearbox for low speed, high torque applications.

DC motors by nature offer a very high starting torque and are suited to a very wide range of applications, the gearbox is 'lubricated for life' to ensure consistent performance.

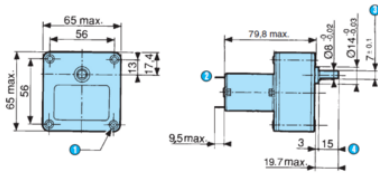
Options for a bespoke solution include, different power connections, EMC filter, encoder options & mechanical/electrical adaptations.

### TECHNICAL DATA

IP class	IP40
Max. torque	5
Power	3 W
Ratio	i=12.5→2500:1
Shaft diameter	8 mm
Speed options	1.7rpm→344rpm
Supply voltage	12 V DC, 24 V DC
Type of gearbox	Spur
Weight	0.465 kg

## Dimensions

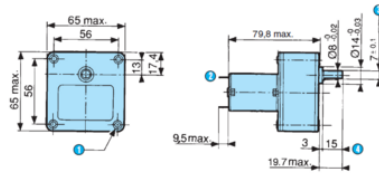
828670



- 1 4 fixing holes  $\text{O M4} \times 12$
- 2 2 standard tags NFC 20-120, series 2.8 x 0.5 mm
- 3  $7 \pm 0.1$  across flats
- 4 Shaft pushed-in

## Dimensions

828670



- 1 4 fixing holes  $\text{O M4} \times 12$
- 2 2 standard tags NFC 20-120, series 2.8 x 0.5 mm
- 3  $7 \pm 0.1$  across flats
- 4 Shaft pushed-in