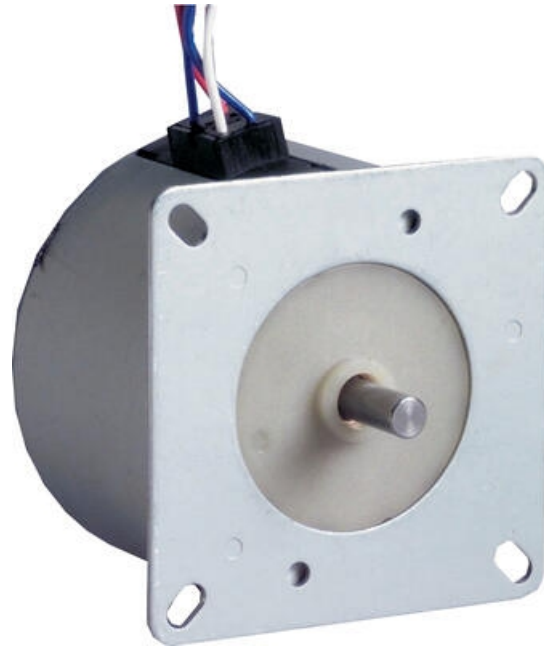


CROUZET - SYNCHRONOUS MOTORS

823400XX

Synchronous Motor 0.16W 24?240Vac 600rpm 2.5mNm
1-direction

- Single phase 24V→230V / 50Hz
- 0.2→3W, 2.5→106mNm, 250→600rpm
- Constant speed independant of load
- Short start & stop times
- Single direction & reversible options



PRODUCT DESCRIPTION

The Crouzet synchronous motor is a small, compact motor with precise speed and short start and stop times.

A Synchronous motor is characterised by a constant speed of rotation which is independent of the load but linked to the supply frequency.

A synchronous motor maintains its speed of rotation until an overload occurs. When overload occurs, the motor loses synchronisation, ie. it stops and develops an oscillation (vibration).

Available in single direction clockwise, anti-clockwise, or reversible.

No capacitor required on single direction motors.

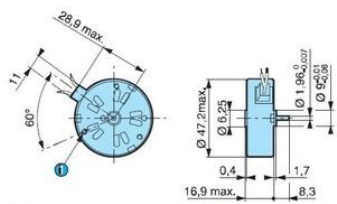
Motors for other voltages than 230 V ac/50 Hz are available.

TECHNICAL DATA

Diameter	47 mm
IP class	IP30
Length	17 mm
Max. torque	0.0033
Nominal speed	600 rpm
Nominal torque	0.0025
Power	0.16 W
Shaft diameter	2 mm
Supply voltage	230 V AC
Weight	0.11 kg

Dimensions

82 340 0



- 1 3 fixing holes $\varnothing M2$ at 120° on $r=19.5 \text{ max.}$ depth 2.4 mm