

HONSBERG - LABO XF SERIES FLOW METER

Dynamic diaphragm (flap)

XF-008GMI015
 Flow sensor 1/4", 1-15 l/min, 4-20mA

- For liquids up to 16 bar
- Flow from 1 l/min. to 80 l/min.
- Connection from 1/4" to 3/4"
- Housing in PPS or stainless



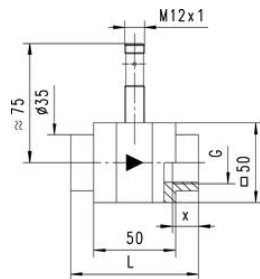
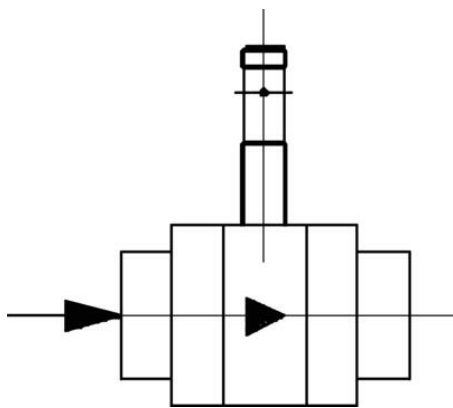
PRODUCT DESCRIPTION

Model XF is a compact flow sensor in PPS plastic or stainless for water applications. Measurement takes place via a spring mounted metal plate which gives a rapid response time, low pressure drop, and high accuracy. The design with no moving parts makes it suitable for applications where this is a requirement. XF can be simply combined with Honsberg's Omni- or Flex technology.

TECHNICAL DATA

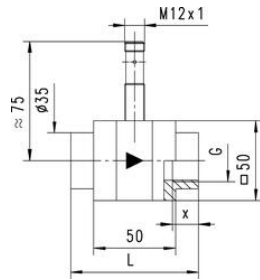
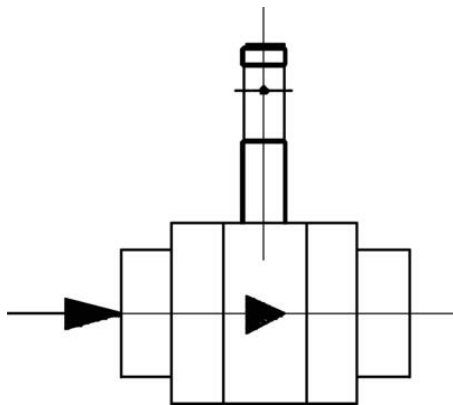
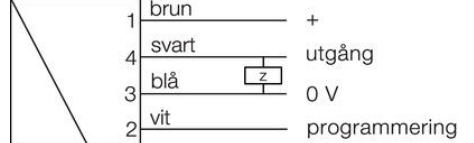
Accuracy	± 3% of the measured value, but at least 0.25 l / min
Connection type	Internal thread G ¼ "
Electrical connection	Plug M12x1, 4-pole
Flow max	120 l/min
Flow range max	15 l/min
Flow range min	1 l/min
Function	Dynamic membrane
IP class	IP67
Load max	100 mA
Material of body	PPS
Material of connection	Nickel-plated brass
Material of seals	Viton
Material tinplate	Stainless steel 1.4031k
Power consumption	20 mA

Pressure drop	Approximately 0.5 bar at maximum flow
Pressure range max	16 bar
Signal outputs	4-20 mA
Temperature of media from	0 °C
Temperature of media to	70 °C
Type of flow component	Flow Measuring
Weight	0.35 kg
Viscosity max	1 cSt
Voltage dc max	30 V
Voltage dc min	10 V



G"	L mm	X mm	Weight kg
1/4	74	12	0,60
3/8	74	12	0,60
1/2	78	14	0,60
3/4	82	16	0,65
1	82		0,70

PNP/ström-/spänning utgång



G"	L mm	X mm	Weight kg
1/4	74	12	0,60
3/8	74	12	0,60
1/2	78	14	0,60
3/4	82	16	0,65
1	82		0,70

PNP/ström-/spänning utgång

