

VALCO - CV SERIES FLOW INDICATOR

Sight glass/rotor

00.0006.0057.1
0,6..10 l/min H2O, G1/4F, Brass

- Ranges covering 0.6..80 l/min H2O
- Bidirectional
- Up to 25 bar max (depending on model)
- Brass connections



PRODUCT DESCRIPTION

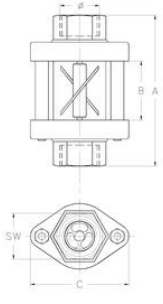
The CV series flow indicator from Val.Co allows a visual inspection of the passage of liquids in hydraulic and water systems. The propeller is coloured for better visualization with opaque liquids and there is also an option for a blue propeller and an output.

TECHNICAL DATA

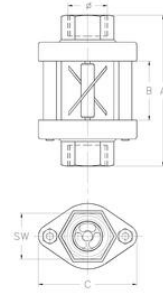
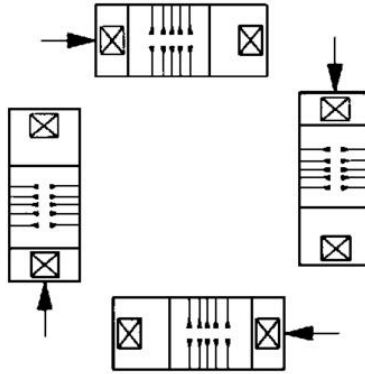
Colour of rotor	Red
Flow range max	10 l/min
Manufacturer part no.	CV.008G.PSO.R
Material of body	Latene
Material of connection	Brass
Material of glass tube	Pyrex glass
Material of rotor	Polypropylene
Material of seals	NBR
Min flow rate for rotor (oil 40 Cst) l/min	2.5
Min flow rate for rotor (oil 41-150 Cst) l/min	3.5
Min flow rate for rotor (water) l/min	0.6
Pressure drop (bar)	0.15
Pressure max	25 bar
Process connection	1/4 BSP

Temperature operational max

100 °C



G°	Model	A mm	B mm	C mm	SW mm	Weight kg
1/4	CV-008	66	22	44	20	0,10
3/8	CV-010	92	36	60	28	0,17
1/2	CV-015	92	36	60	28	0,17
3/4	CV-020	114	46	70	46	0,70
1	CV-025	114	46	70	46	0,60



G°	Model	A mm	B mm	C mm	SW mm	Weight kg
1/4	CV-008	66	22	44	20	0,10
3/8	CV-010	92	36	60	28	0,17
1/2	CV-015	92	36	60	28	0,17
3/4	CV-020	114	46	70	46	0,70
1	CV-025	114	46	70	46	0,60

