

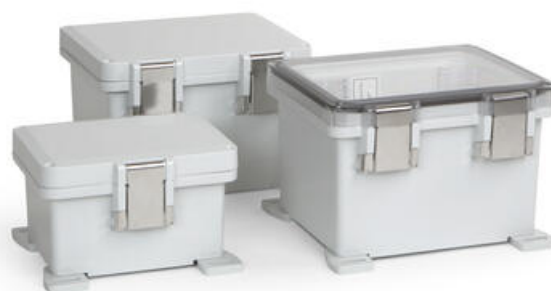


## IP69 WALL MOUNTABLE POLYBOX ENCLOSURE

PolyBox

UPCG121006HMLF  
Hinge Metal Latch Mounting Flange Grey Lid  
326x306x185mm

- Greater material thickness
- Cost-efficient mold modifications
- Lightweight products
- Durability and easy maintenance
- IK10 impact strength



### PRODUCT DESCRIPTION

The UL-listed PolyBox enclosures have been specifically designed for the US market.

PolyBox enclosures are rugged industrial polycarbonate enclosures with unique and innovative characteristics, such as the integral non-metallic latch and a corner elevator mounting system for adjustable hinged front kits and back panels.

Robust and tightly sealed, the JIC sized enclosures are manufactured from a high standard of polycarbonate material.

A wide range of configurations are available and can be customised with multiple features.

### TECHNICAL DATA

DATA

Width	306 mm
Depth	185 mm
Height	326 mm
Colour	Grey
Material	Polycarbonate
IP class	IP69
Temperature operational min	-40 °C
Temperature operational max	80 °C
Temperature range, short term min	-40 °C
Temperature range, short term max	120 °C