

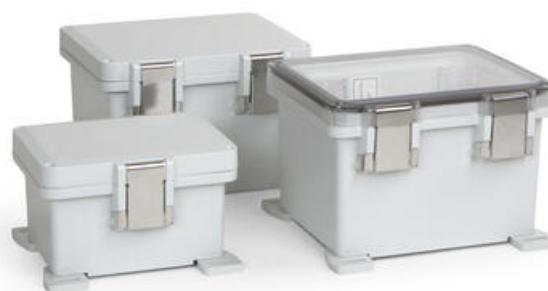
IP69 WALL MOUNTABLE POLYBOX ENCLOSURE

PolyBox

UPCG181610HNLF
Hinge Non-metal Latch Mounting Flange Grey Lid
482x463x286mm



- Greater material thickness
- Cost-efficient mold modifications
- Lightweight products
- Durability and easy maintenance
- IK10 impact strength



PRODUCT DESCRIPTION

The UL-listed PolyBox enclosures have been specifically designed for the US market.

PolyBox enclosures are rugged industrial polycarbonate enclosures with unique and innovative characteristics, such as the integral non-metallic latch and a corner elevator mounting system for adjustable hinged front kits and back panels.

Robust and tightly sealed, the JIC sized enclosures are manufactured from a high standard of polycarbonate material.

A wide range of configurations are available and can be customised with multiple features.

TECHNICAL DATA

DATA

Width	463 mm
Depth	286 mm
Height	482 mm
Colour	Grey
Material	Polycarbonate
IP class	IP69
Temperature operational min	-40 °C
Temperature operational max	80 °C
Temperature range, short term min	-40 °C
Temperature range, short term max	120 °C