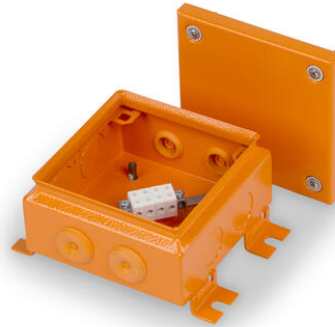


## FIRE PROTECTION JUNCTION BOXES – STEEL

FPT1515FE46  
Fire Protection FE Junction Box 4x1.5-6mm E90  
150x150mm



- Polyester painted mild steel
- Available in three sizes
- Factory mounted cable entries and fastening lugs

### PRODUCT DESCRIPTION

Technical equipment with functional maintenance is critical at all locations where large numbers of people tend to gather such as airports, hospitals, government agencies and industrial plants. The Ensto Vulcano high-quality fire protection junction boxes are designed to be used in cable systems with system circuit integrity.

Technical equipment with function maintenance is required for e.g. the following buildings and systems:

- Hospitals
- Commercial buildings
- Underground railway systems
- Chemicals industry
- Hotels and restaurants
- Airports

Ensto Vulcano steel fire protection junction boxes are manufactured from polyester painted mild steel. They meet the degree of protection of IP65 and impact resistance of IK09. The boxes are equipped with ceramic terminals.

Steel junction boxes in brief

- Available in three sizes
- Factory-mounted cable entries and fastening lugs
- Screw anchors for wall/ceiling installation included
- Terminal rail easy to mount/dismount
- Available with single terminal blocks or tapping terminals

Contents of product package

- Enclosure base
- Cover
- Cover screws with gaskets and cage nuts
- Screw anchors for wall/ceiling mounting
- Terminal rail
- Terminal rail mounting screws
- Ceramic terminals
- PE terminal(s)
- Rubber grommets
- Accessories for earthing the cover

## TECHNICAL DATA

<b>Colour</b>	Orange RAL 2003
<b>Cross section</b>	1,5-6 mm <sup>2</sup>
<b>Depth</b>	80 mm

<b>Height</b>	150 mm
<b>Impact resistance</b>	IK09
<b>IP class</b>	IP65
<b>Isolation voltage</b>	750 V
<b>Material</b>	Steel
<b>Number of poles</b>	4
<b>Rated current</b>	41 A
<b>Temperature operational max</b>	40 °C
<b>Temperature operational min</b>	-25 °C
<b>Width</b>	150 mm