

## RQG1-S STRAIGHT, QUICK-TYPE

5020.082.207

RQG1-S AD10 straight black

- Quick-type connector
- Installation without counter nut
- IP66



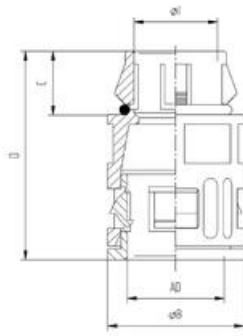
### PRODUCT DESCRIPTION

RQG1-S is a quick-type connector made of polyamide. Suitable wall thickness from 1mm up to 2,5mm. Resistant against chemicals.

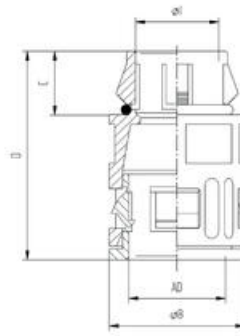
Available also in grey color.

### TECHNICAL DATA

Approvals	CPT, Lloyd's, REACH, RoHS, VDE
Colour	Black
Hose dimension AD	10
IP class	IP66
Material	Polyamide
Pack size	50
Temperature operational max	120 °C
Temperature operational min	-40 °C



AD	Ø I	Ø B	C	D
10	7	17	11,7	34,5
13		20	13,6	38,6
15,8		23	13,5	40,5
21,2		29,5	13,8	45,3
28,5	23,5	37	17,9	51,9
34,5	30,5	40	18,7	54,7
42,5	36,5	52	21	60
54,5	43	64	21	63



AD	Ø I	Ø B	C	D
10	7	17	11,7	34,5
13		20	13,6	38,6
15,8		23	13,5	40,5
21,2		29,5	13,8	45,3
28,5	23,5	37	17,9	51,9
34,5	30,5	40	18,7	54,7
42,5	36,5	52	21	60
54,5	43	64	21	63