

IDEM KL3-SS-Z STAINLESS STEEL LOCKABLE SWITCH

456001AZ

KL3-SS-Z M20 manual release lid and side Std Actuator



- Locking force F1Max = 3000N
- PL e/Kat. 4
- An escape option
- 316 stainless steel housing
- 4 x LED indicator



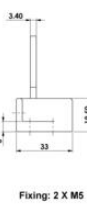
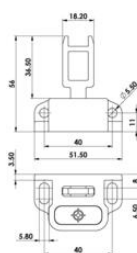
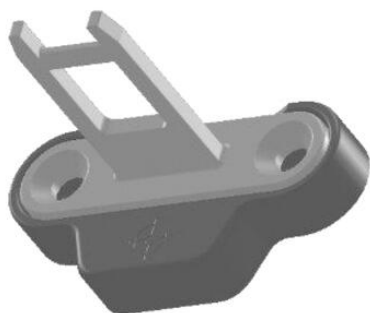
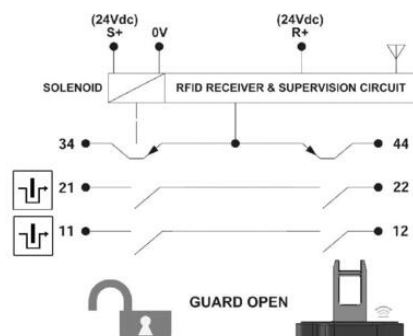
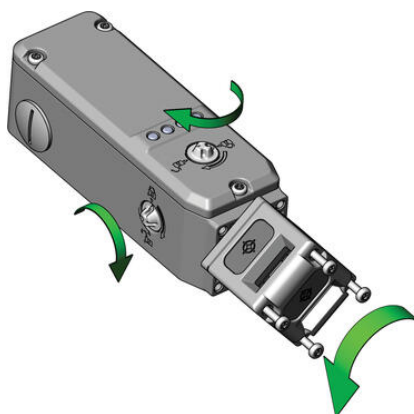
PRODUCT DESCRIPTION

The stainless-steel versions of IDEM's solenoid-controlled RFID safety interlock switches, combine corrosion-resistant housings with full OSSD safety outputs and guard-locking capabilities. These IP67-rated units are constructed from high-grade stainless steel, making them suitable for corrosive or hygroscopic settings. They include dual OSSD safety outputs for direct connection to safety controllers, plus auxiliary outputs that report both guard position and lock status. The internal RFID coding ensures high-level tamper resistance, and the solenoid lock delivers holding forces ranging from 2 000 N (in plastic KLP models) up to 3 000 N (in KLM-Z-4ST metal variants), meeting Cat 4 / PLe / SIL 3 machine safety standards. Mounting flexibility is offered via rotatable heads with multiple actuator entry positions, while LED indicators provide real-time status feedback for diagnostics and lock/unlock sequences. These stainless-steel interlocks are ideal for industries requiring both hygiene and high-security access control such as pharmaceutical filling lines, washdown food machinery, and outdoor equipment exposed to the elements. Their rugged construction stands up to pressure washers, chemical cleaning agents, and process fluids, while the solenoid lock ensures that machinery cannot operate unless the guard is correctly closed and locked. The KLM-Z-4ST-SS variant even includes optional operator interface elements directly on the housing, enabling local lock-release commands or visual status without needing external panels. With automatic diagnostics and proven performance in high-cycle, high-demand environments, these interlocks deliver reliable guard locking and access control across a range of industrial applications.

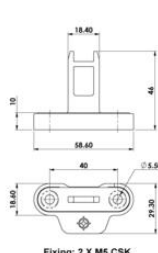
TECHNICAL DATA

Actuator entry positions	8
Approvals	ISO 13849-1, ISO 14119, EN62061, EN60947-5-1, UL 508
Conduit entry	M20
Head material	Stainless steel 316
Holding force (F1Max)	3000 N
Housing material	Stainless steel 316
Integrated LED indication	Yes
IP class	IP67
LED supply voltage	24v

Mounting	4 x M5
Operating temperature	-25°C ... +40°C
PFHd	4,80 e-10
PL	e acc. ISO13849-1
Rated insulation voltage	500 V AC
SIL	3 acc. EN62061
Solenoid Voltage	24V dc
Weight	1490 g



Fixing: 2 X M5



Fixing: 2 X M5 CSK

