



## IDEM STAINLESS STEEL IP69K GUARD LOCKING SWITCH KLT-SS

451004HF

KLT-SS (Mechanical Only) M20 110v - HF Actuator

- Anti-tamper tongue technology
- 4 actuator entry positions
- Will fit on 73mm fixing centres
- Mirror polished Ra10 stainless steel 316
- IP69K



### PRODUCT DESCRIPTION

The KLT-SS Series Guard Locking switch is a tongue type safety interlock switch incorporating traditional mechanical anti-tamper tongue technology utilising IDEM Safety Switched patented cam system.

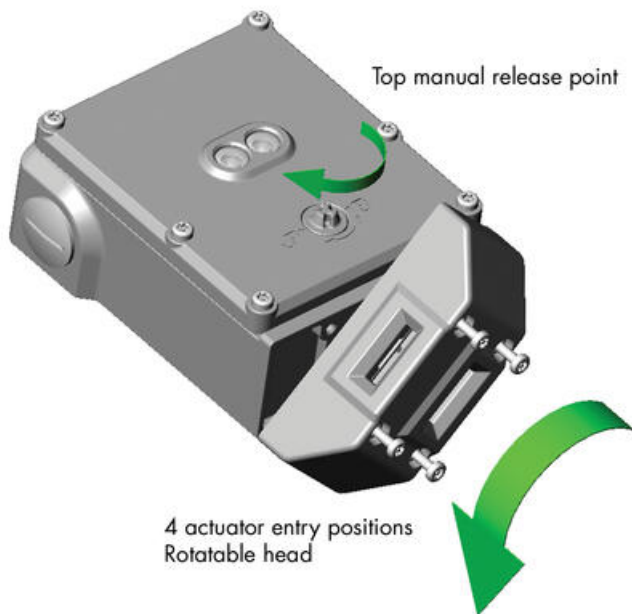
They interlock and hold closed guard doors to protect operators from moving or hazardous machinery. They are particularly suited to where a high degree of anti-tamper technology is required to prevent accidental or deliberate attempts to by-pass the interlock.

The KLT-SS Solenoid Locking Switch has a mirror polished Stainless Steel 316 body design and have been developed with a maximum holding force of 2000N to keep medium to large guard doors closed until hazards have been removed.

IP69K enclosure protection is maintained by a double seal lid gasket design and metal fixings.

The KLT-SS has a low profile and fixing holes are on an industry standard 73mm centre to enable easy retrofitting to new or existing guards (or where extra anti-tamper is required).

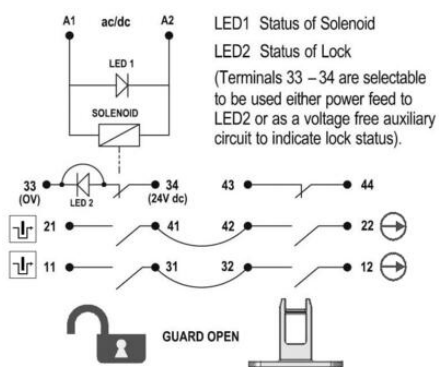
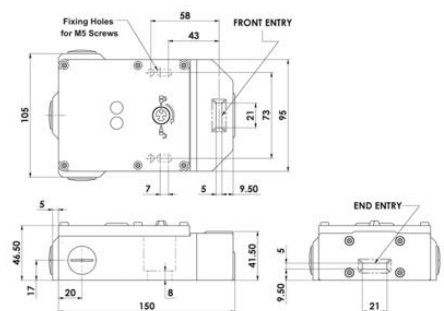
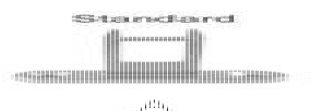
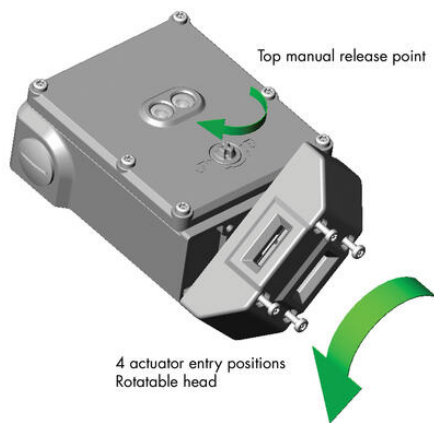
The head has been designed to allow rotation to provide up to 4 actuator entry positions.



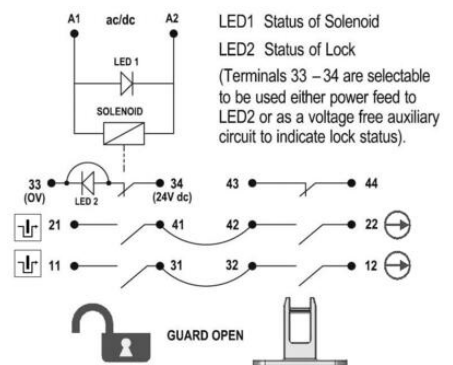
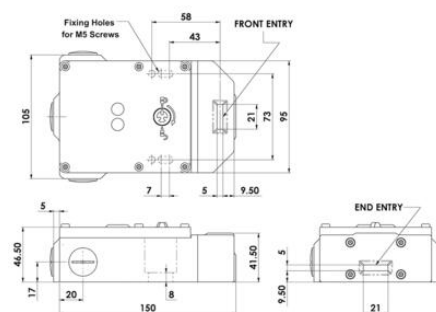
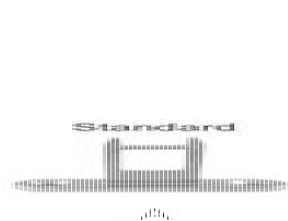
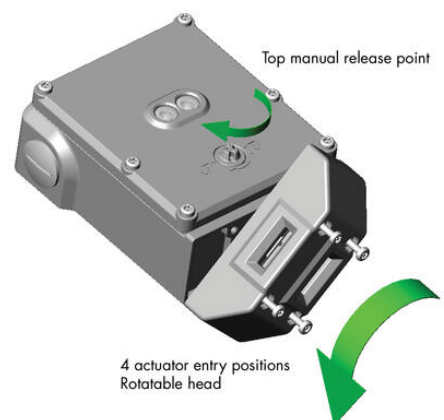
## TECHNICAL DATA

<b>Actuator</b>	Heavy duty flexible
<b>Annual usage</b>	8 cycles per hour/24 hours per day/365 days
<b>Approvals</b>	ISO 13849-1, ISO 14119, EN60204-1, EN62061, EN60947-5-1, UL 508
<b>Conduit entry</b>	M20
<b>Contact type</b>	4NC safety contacts, 1NO auxiliary contact (guard open), 1NO auxiliary contact (guard locked) (selectable option for LED2 guard locked)
<b>Contacts</b>	4NO 2NC
<b>Head material</b>	Stainless steel 316
<b>Holding force (F1Max)</b>	3000 N
<b>Housing material</b>	Stainless steel 316
<b>IP class</b>	IP69K
<b>LED indication</b>	LED1 red solenoid power on, LED2 green switch locked (if selected)
<b>Manual operation</b>	Manual release lid only
<b>Maximum approach / withdrawal speed</b>	600 mm/s
<b>Mechanical reliability B10d</b>	$2.5 \times 10^6$ operations at 100mA load
<b>Mounting</b>	2 x M5
<b>MTTFd</b>	356 years
<b>Operating temperature</b>	-25..40°C
<b>PFHd</b>	$3.44 \times 10^{-8}$
<b>PL</b>	e acc. ISO13849-1
<b>Rated insulation voltage</b>	600V ac
<b>SIL</b>	3 acc. EN62061

<b>Solenoid Voltage</b>	110V ac
<b>Thermal current (I<sub>th</sub>)</b>	5 A
<b>Travel for positive opening</b>	10 mm
<b>Utilisation category</b>	AC15, A300, 3 A
<b>Withstand voltage</b>	2500V ac



	6.0	5.0	0mm
11/12	Open		
21/22	Open		
33/34			Open
43/44			Open



6.0 5.0 0mm

11/12	Open	
21/22	Open	
33/34		Open
43/44		Open