

## IDEM STAINLESS STEEL IP69K GUARD LOCKING SWITCH KL3-SS

205002HFH

KL3-SS ½NPT 24v (std release) - HFH Actuator

- Solenoid locking
- Power solenoid to unlock
- Slim body 48mm wide x 177mm long
- 2 LEDs for solenoid and lock status
- Suitable for all industry applications IP69K



### PRODUCT DESCRIPTION

The KL3-SS Series guard locking switches have a rugged Stainless Steel 316 body and have been developed with a holding force of 2000N to keep medium to large guard doors closed until hazards have been removed.

They are designed in accordance with EHEDG guidelines for hygienic design (EHEDG European Hygienic Engineering & Design Group). The mirror-polished surface to Ra10 is designed to cope with direct food splash and cleaning found in the toughest applications of the Food Processing industries.

They have IP69K enclosure protection and can be high pressure hosed with detergent at high temperature.

Designed with slim body under 50mm wide the KL3-SS series can be fitted to 50mm (2") frame sections or to applications where space is restricted.

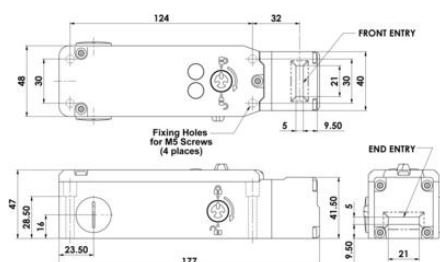
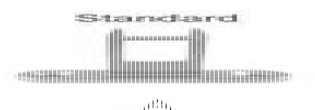
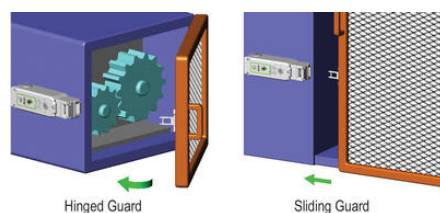
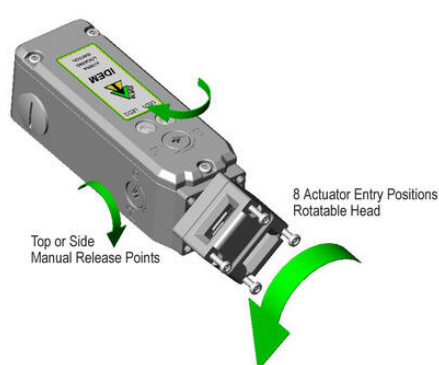
The head will rotate to provide up to 8 actuator entry positions.

2 manual override points are provided (by using anti-tamper key).

### TECHNICAL DATA

<b>Actuator</b>	Heavy duty s/steel
<b>Annual usage</b>	8 cycles per hour/24 hours per day/365 days
<b>Approvals</b>	ISO 13849-1, ISO 14119, EN60204-1, EN62061, EN60947-5-1, UL 508
<b>Conduit entry</b>	1/2" NPT
<b>Contact type</b>	4NC safety contacts, 1NO auxiliary contact (guard open)
<b>Contacts</b>	4NC 1NO
<b>Head material</b>	Stainless steel 316
<b>Holding force (F1Max)</b>	3000 N
<b>Housing material</b>	Stainless steel 316

<b>IP class</b>	IP69K, IP67
<b>LED indication</b>	LED1 solenoid power, LED2 lock status indication or 1NO auxiliary contact (lock open)
<b>LED supply voltage</b>	24Vdc
<b>Manual operation</b>	Standard manual release lid and side
<b>Maximum approach / withdrawal speed</b>	600 mm/s
<b>Mechanical reliability B10d</b>	2.5 x 10 <sup>6</sup> operations at 100mA load
<b>Mounting</b>	4 x M5
<b>MTTFd</b>	356 years
<b>Operating temperature</b>	-25..50°C
<b>PFHd</b>	3.44 x 10 <sup>-8</sup>
<b>PL</b>	e acc. ISO13849-1
<b>Rated insulation voltage</b>	600V ac
<b>SIL</b>	3 acc. EN62061
<b>Solenoid Voltage</b>	24V ac/dc
<b>Thermal current (Ith)</b>	5 A
<b>Travel for positive opening</b>	10 mm
<b>Utilisation category</b>	AC15, A300, 3 A
<b>Withstand voltage</b>	2500V ac





	6.0	5.0	0mm
11/12	Open		
21/22	Open		
33/34			Open
43/44			Open



	6.0	5.0	0mm
11/12	Open		
21/22	Open		
33/34			Open
43/44			Open