

IDEM STAINLESS STEEL IP69K GUARD LOCKING SWITCH KL3-SS

205002F

KL3-SS ½NPT 24v (std release) - flat actuator

- Solenoid locking
- Power solenoid to unlock
- Slim body 48mm wide x 177mm long
- 2 LEDs for solenoid and lock status
- Suitable for all industry applications IP69K



PRODUCT DESCRIPTION

The KL3-SS Series guard locking switches have a rugged Stainless Steel 316 body and have been developed with a holding force of 2000N to keep medium to large guard doors closed until hazards have been removed.

They are designed in accordance with EHEDG guidelines for hygienic design (EHEDG European Hygienic Engineering & Design Group). The mirror-polished surface to Ra10 is designed to cope with direct food splash and cleaning found in the toughest applications of the Food Processing industries.

They have IP69K enclosure protection and can be high pressure hosed with detergent at high temperature.

Designed with slim body under 50mm wide the KL3-SS series can be fitted to 50mm (2") frame sections or to applications where space is restricted.

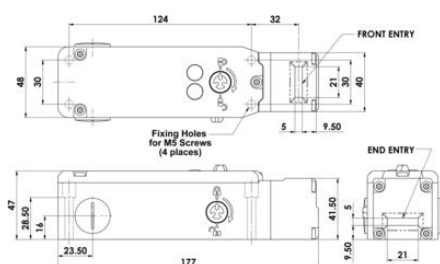
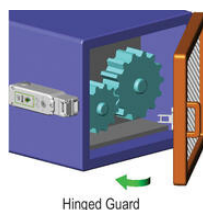
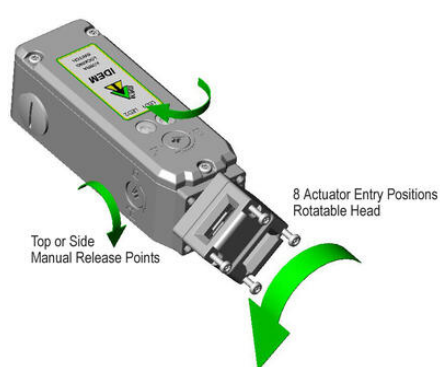
The head will rotate to provide up to 8 actuator entry positions.

2 manual override points are provided (by using anti-tamper key).

TECHNICAL DATA

Actuator	Flat
Annual usage	8 cycles per hour/24 hours per day/365 days
Approvals	ISO 13849-1, ISO 14119, EN60204-1, EN62061, EN60947-5-1, UL 508
Conduit entry	1/2" NPT
Contact type	4NC safety contacts, 1NO auxiliary contact (guard open)
Contacts	4NC 1NO
Head material	Stainless steel 316
Holding force (F1Max)	3000 N
Housing material	Stainless steel 316

IP class	IP69K, IP67
LED indication	LED1 solenoid power, LED2 lock status indication or 1NO auxiliary contact (lock open)
LED supply voltage	24Vdc
Manual operation	Standard manual release lid and side
Maximum approach / withdrawal speed	600 mm/s
Mechanical reliability B10d	2.5 x 10 ⁶ operations at 100mA load
Mounting	4 x M5
MTTFd	356 years
Operating temperature	-25..50°C
PFHd	3.44 x 10 ⁻⁸
PL	e acc. ISO13849-1
Rated insulation voltage	600V ac
SIL	3 acc. EN62061
Solenoid Voltage	24V ac/dc
Thermal current (Ith)	5 A
Travel for positive opening	10 mm
Utilisation category	AC15, A300, 3 A
Withstand voltage	2500V ac





	6.0	5.0	0mm
11/12	Open		
21/22	Open		
33/34			Open
43/44			Open



	6.0	5.0	0mm
11/12	Open		
21/22	Open		
33/34			Open
43/44			Open