



## IDEM KLTM LOCKING SWITCH

450001F

KLTM (Mechanical Only) M20 24v - Flat Actuator

- Electric release
- 4 key entry positions
- 2 x LED indicator
- Locking force up to 2000 N
- Dimensions 105 mm x 150 mm



### PRODUCT DESCRIPTION

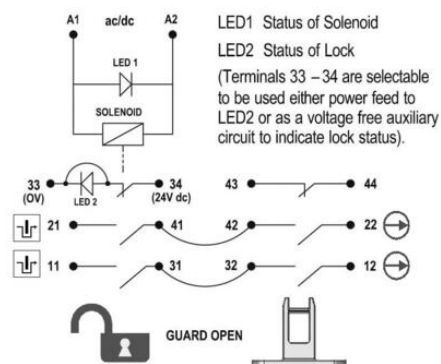
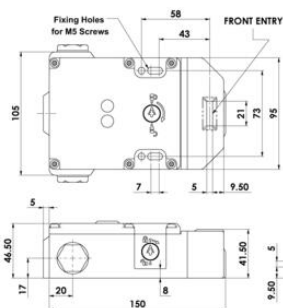
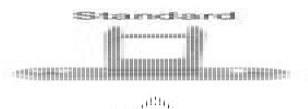
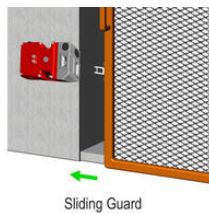
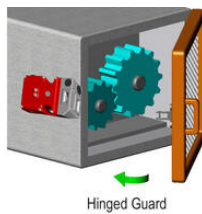
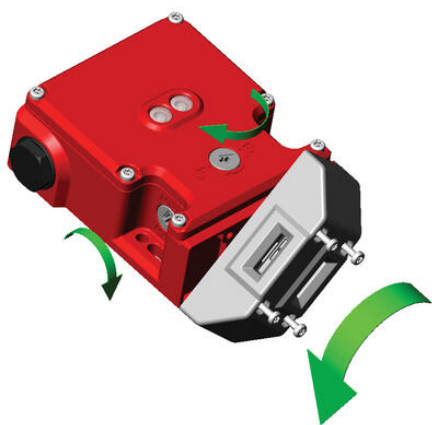
Locking switch with RAMZLOCK KLTM locking, made of cast metal, with locking force up to 2000N. The breaker head is made of stainless steel. The switch has 2 LEDs that show the status of the solenoid and the state of the blockage. It also has a rotatable head, which provides 4 key entry positions for easy and flexible mounting. The KLTM switch has a standard spacing between the mounting holes - 73 mm.

In the event of a voltage drop, the switch can be opened in an emergency without any special keys. The switch is available in the version: voltage release.

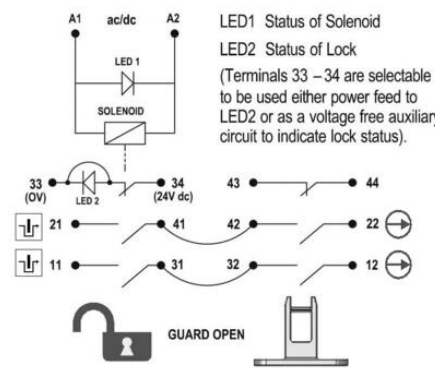
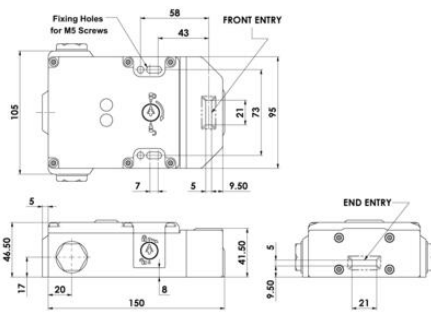
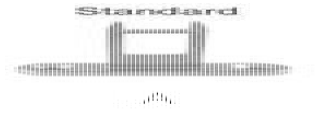
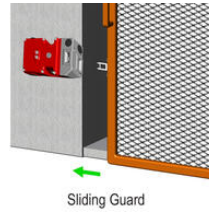
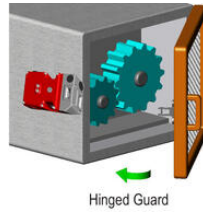
### TECHNICAL DATA

|                       |   |
|-----------------------|---|
| Actuator              | Flat  |
| Annual usage          | 8 cycles per hour/24 hours per day/365 days   |
| Approvals             | ISO 13849-1, ISO 14119, EN60204-1, EN62061, EN60947-5-1, UL 508   |
| Conduit entry         | M20   |
| Contact type          | 4NC safety contacts, 1NO auxiliary contact (guard open), 1NO auxiliary contact (guard locked) (selectable option for LED2 guard locked) |
| Contacts              | 4NC 2NO   |
| Head material         | Stainless steel 316   |
| Holding force (F1Max) | 3000 N  |
| Housing material      | Die cast metal  |

|                                     |  |
|-------------------------------------|--|
| IP class                            | IP67   |
| LED indication                      | LED1 red solenoid power on, LED2 green switch locked (if selected) |
| Manual operation                    | Standard manual release lid and side                               |
| Maximum approach / withdrawal speed | 600 mm/s   |
| Mechanical reliability B10d         | 2.5 x 10 <sup>6</sup> operations at 100mA load                     |
| Mounting                            | 2 x M5   |
| MTTFd                               | 356 years  |
| Operating temperature               | -25..40°C  |
| PFHd                                | 3.44 x 10 <sup>-8</sup>  |
| PL                                  | e acc. ISO13849-1  |
| Rated insulation voltage            | 600V ac  |
| SIL                                 | 3 acc. EN62061   |
| Solenoid Voltage                    | 24V ac/dc  |
| Thermal current (Ith)               | 5 A  |
| Travel for positive opening         | 10 mm  |
| Utilisation category                | AC15, A300, 3 A  |
| Withstand voltage                   | 2500V ac   |



|       | 6.0  | 5.0 | 0mm  |
|-------|------|-----|------|
| 11/12 | Open |     |      |
| 21/22 | Open |     |      |
| 33/34 |      |     | Open |
| 43/44 |      |     | Open |



|       | 6.0  | 5.0 | 0mm  |
|-------|------|-----|------|
| 11/12 | Open |     |      |
| 21/22 | Open |     |      |
| 33/34 |      |     | Open |
| 43/44 |      |     | Open |