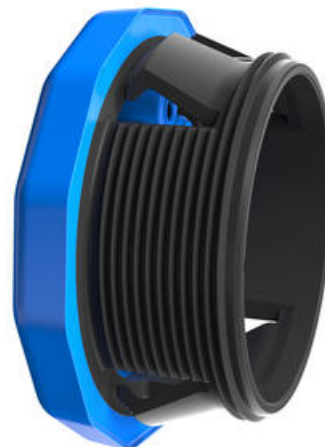


KES-R-FDA HIGH DENSITY CABLE ENTRY SYSTEMS

28939.5

KES-R-FDA M50/19, FDA Certified M50 Snap in/Screw
Push in cable entry, 19 cables, 3.2mm to 6.5mm, Blue

- For Cable, Pipe & Hose Diameters 1.5mm To 22.5mm
- High Density, Up To 68 Cables
- For Wall Thickness 1-11mm
- M25 To M63 Hole Sizes
- FDA Certified



PRODUCT DESCRIPTION

The KES-R-M from Contactclip has an additional glass-fibre reinforced screw thread to achieve IP66 rating to and allows it to be fitted in to enclosures up to 11mm thick.

These can be retro-fitted in place of a conventional gland from M25 through to M63.

The TPE membrane is the same as the KES-E-R cable entry solution and is ideal for bringing in multiple cables, tubes and pipes where space is tight.

These are quick and easy to fit on enclosures, they can be snapped in (IP54) or with an additional nut, IP66 can be achieved. This system is ideal for applications where there are multiple entries that need a higher IP and strain relief is not required. Available for panel thickness 1 to 11mm with configurations of up to 68 entries of 1mm to 22.2mm cable diameter.

TECHNICAL DATA

GENERAL DATA

| | |
|-----------------------------------|-----------------------|
| Type | KES-R-M |
| Mounting | Push in, Screw fixing |
| Colour | Blue |
| IP class | IP54, IP66 |
| Approvals | cUL, UL |
| NEMA class | 12, 4X |
| Number of cables | 19 |
| Number of cables x cable diameter | 19 x 3.2mm-6.5mm |
| Length | 61 mm |

| | |
|------------------|-------|
| Width | 61 mm |
| Installed height | 8 mm |

MOUNTING DETAILS

| | |
|-----------------------------|---|
| Wall thickness | 1.0mm-2.5mm (snap-in), 1.0mm-11mm (screw) |
| Drillhole diameter | 50 mm |
| Torque of the fixing screws | 7 |

MATERIALS

| | |
|----------------------------|--------------------|
| Material | Polyamide 6.6, TPE |
| Flammability class | V-0 |
| Sealing material | TPE |
| Silicone-free | Yes |
| Halogen-free | Yes |
| Operating temperature from | -40 °C |
| Operating temperature to | 80 °C |

APPROVALS

| | |
|-------------------|-------------------|
| Approvals | cUL, UL |
| UL test standard | UL 508A |
| cUL test standard | CSA C22.2 No.1-18 |

ADDITIONAL DATA

| | |
|-------------------|----------|
| Tariff code | 39259020 |
| Country of origin | DE |
| Weight | 27.68 g |
| Pack size | 10 |



