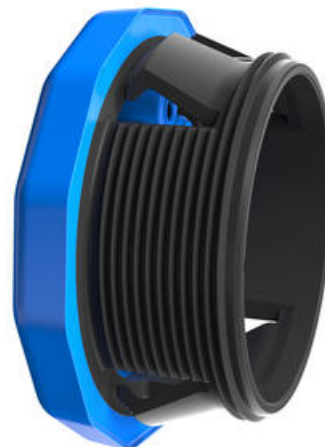


KES-R-FDA HIGH DENSITY CABLE ENTRY SYSTEMS

28930.5

KES-R-FDA M25/3, FDA Certified M25 Snap in/Screw
Push in cable entry, 3 cables, 3.2mm to 6.5mm mixed,
Blue

- For Cable, Pipe & Hose Diameters 1.5mm To 22.5mm
- High Density, Up To 68 Cables
- For Wall Thickness 1-11mm
- M25 To M63 Hole Sizes
- FDA Certified



PRODUCT DESCRIPTION

The KES-R-M from Contactclip has an additional glass-fibre reinforced screw thread to achieve IP66 rating to and allows it to be fitted in to enclosures up to 11mm thick.

These can be retro-fitted in place of a conventional gland from M25 through to M63.

The TPE membrane is the same as the KES-E-R cable entry solution and is ideal for bringing in multiple cables, tubes and pipes where space is tight.

These are quick and easy to fit on enclosures, they can be snapped in (IP54) or with an additional nut, IP66 can be achieved. This system is ideal for applications where there are multiple entries that need a higher IP and strain relief is not required. Available for panel thickness 1 to 11mm with configurations of up to 68 entries of 1mm to 22.2mm cable diameter.

TECHNICAL DATA

GENERAL DATA

Type	KES-R-M
Mounting	Push in, Screw fixing
Colour	Blue
IP class	IP54, IP66
Approvals	cUL, UL
NEMA class	12, 4X
Number of cables	3
Number of cables x cable diameter	1 x 3.2mm-6.5mm, 2 x 3.2mm-5.2mm
Length	38 mm

Width	38 mm
Installed height	8 mm

MOUNTING DETAILS

Wall thickness	1.0mm-2.5mm (snap-in), 1.0mm-11mm (screw)
Drillhole diameter	25 mm
Torque of the fixing screws	3

MATERIALS

Material	Polyamide 6.6, TPE
Flammability class	V-0
Sealing material	TPE
Silicone-free	Yes
Halogen-free	Yes
Operating temperature from	-40 °C
Operating temperature to	90 °C

APPROVALS

Approvals	cUL, UL
UL test standard	UL 508A
cUL test standard	CSA C22.2 No.1-18

ADDITIONAL DATA

Tariff code	39259020
Country of origin	DE
Weight	13.61 g
Pack size	10

