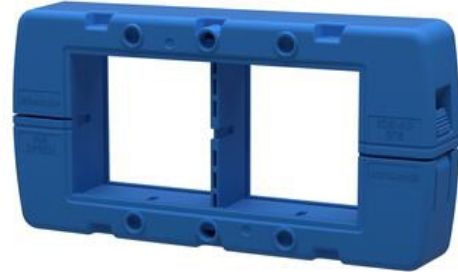


KDSI-SR-FDA MODULAR FOR PREFORMED CABLES

29091.5

KDSI-SR-FDA 1-4, FDA Certified Inverted Screw frame including cover, Blue

- Easy Assembly From The Outside
- Four Parts, Many Solutions
- Uses The Standard Inlays & Seals
- Perfect For Pre-Assembled Cables, Pipes & Tubes
- FDA Approved



PRODUCT DESCRIPTION

The inverted KDSI-SR screw frames enable a complete assembly from the outside. This is ideal for applications where space inside the panel is limited.

The KDSI-SR follow the same modular assembly principles as the popular KDS-SR, that and be assembled from the inside.

The changes to the inverted versions are the new mirrored geometry of the frame's opening tapers and an additional cover frame, which ensures the tight fit of the sealing elements towards the outside and maintains strain relief to DIN EN 62444

KDSI uses the same cut-outs as the standard Industrial Connector ranges from the manufacturers such as Harting, Walther and Ilme.

It also shares the same inlays and IP66 inserts as the KDS square and round variants.

TECHNICAL DATA

GENERAL DATA

Mounting	Screw on
Colour	Blue
IP class	IP66
Approvals	cUL, UL
NEMA class	4x
Length	81 mm
Width	70 mm
Height	19.6 mm
Installed height	19.6 mm

MOUNTING DETAILS

Length of cutout	46 mm
Width of cutout	46 mm
Number of screw holes	4

Diameter of the screw holes	5.5 mm
Fixing screws	M5
Torque of the fixing screws	3

MATERIALS

Material	Polyamide
Glass-fibre reinforced	Yes
Flammability class	V-0
Sealing material	Polyurethane-based
Silicone-free	Yes
Halogen-free	Yes
Operating temperature from	-40 °C
Operating temperature to	120 °C

APPROVALS

Approvals	cUL, UL
UL test standard	UL 508
cUL test standard	C22.2 No. 14-95

ADDITIONAL DATA

Tariff code	39259020
Country of origin	DE
Weight	59.4 g
Pack size	1

