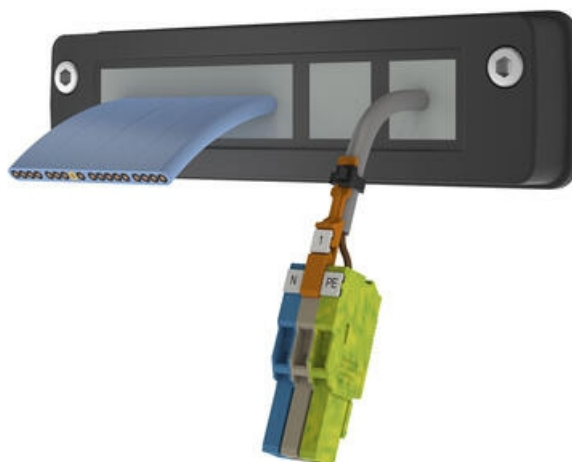


KDS-FB FLAT CABLE AND COMPACT FRAMES

KDS-FB

28712.4
KDS-SR-FB4/F, Frame

- Flat & Round Cable Solution
- Compact UL 94-V0, glass-fibre reinforced frame
- Ideal for the Lift, Crane & Forklift Industry
- Large range of Ecolab approved seals
- IP66



PRODUCT DESCRIPTION

The KDS-FB Compact cable entry system is designed to be used with flat cables commonly used in the forklift, crane and elevator industry as well as round cables, pipes and tubes.

The compact system provides a highly versatility and time saving solution for managing flat cables which can be tricky to handle.

The "fish skin" on the seals mechanically surrounds the inserted flat cable and they ensure optimum tolerance compensation and IP66 protection.

There is a wide selection of frames which can also take a number of round cables up to 16mm ø from the standard KDS range.

TECHNICAL DATA

GENERAL DATA

| | |
|----------|-------|
| Mounting | Screw |
| Colour | Black |

| | |
|------------|---------|
| IP class | IP66 |
| Approvals | cUL, UL |
| NEMA class | 4x |
| Length | 147 mm |
| Width | 39 mm |
| Height | 18.9 mm |

MOUNTING DETAILS

| | |
|-----------------------------|--------|
| Length of cutout | 111 mm |
| Width of cutout | 24 mm |
| Number of screw holes | 2 |
| Diameter of the screw holes | 5.5 mm |
| Fixing screws | M5 |
| Torque of the fixing screws | 3 |

MATERIALS

| | |
|----------------------------|--------------------|
| Material | Polyamide |
| Glass-fibre reinforced | Yes |
| Flammability class | V-0 |
| Sealing material | Polyurethane-based |
| Silicone-free | Yes |
| Halogen-free | Yes |
| Operating temperature from | -40 °C |
| Operating temperature to | 120 °C |

APPROVALS

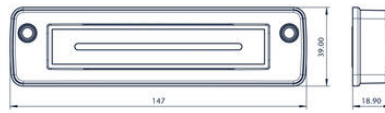
| | |
|-------------------|-----------------|
| Approvals | cUL, UL |
| UL test standard | UL 508 |
| cUL test standard | C22.2 No. 14-95 |

ADDITIONAL DATA

| | |
|-------------------|----------|
| Tariff code | 39259020 |
| Country of origin | DE |
| Weight | 61.4 g |
| Pack size | 1 |



Screw for usage: ISO 4762 / DIN 912



Torque for the frame's mounting screw: 3 Nm