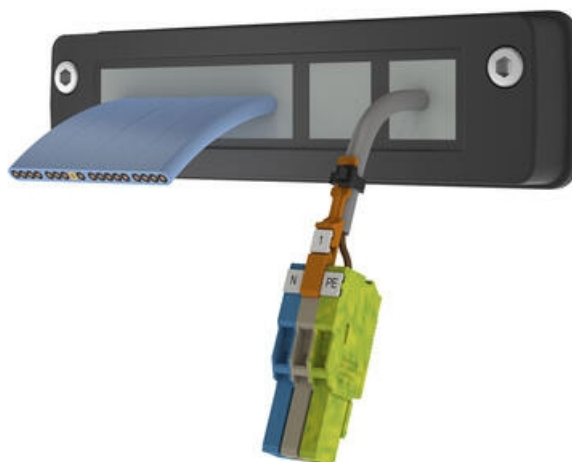


KDS-FB FLAT CABLE AND COMPACT FRAMES

KDS-FB

28704.4
KDS-SR-FB3/B, Frame

- Flat & Round Cable Solution
- Compact UL 94-V0, glass-fibre reinforced frame
- Ideal for the Lift, Crane & Forklift Industry
- Large range of Ecolab approved seals
- IP66



PRODUCT DESCRIPTION

The KDS-FB Compact cable entry system is designed to be used with flat cables commonly used in the forklift, crane and elevator industry as well as round cables, pipes and tubes.

The compact system provides a highly versatility and time saving solution for managing flat cables which can be tricky to handle.

The "fish skin" on the seals mechanically surrounds the inserted flat cable and they ensure optimum tolerance compensation and IP66 protection.

There is a wide selection of frames which can also take a number of round cables up to 16mm ø from the standard KDS range.

TECHNICAL DATA

GENERAL DATA

Mounting	Screw
Colour	Black

IP class	IP66
Approvals	cUL, UL
NEMA class	4x
Length	120 mm
Width	39 mm
Height	18.9 mm

MOUNTING DETAILS

Length of cutout	89 mm
Width of cutout	24 mm
Number of screw holes	2
Diameter of the screw holes	5.5 mm
Fixing screws	M5
Torque of the fixing screws	3

MATERIALS

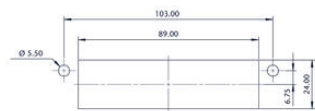
Material	Polyamide
Glass-fibre reinforced	Yes
Flammability class	V-0
Sealing material	Polyurethane-based
Silicone-free	Yes
Halogen-free	Yes
Operating temperature from	-40 °C
Operating temperature to	120 °C

APPROVALS

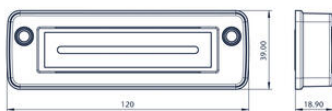
Approvals	cUL, UL
UL test standard	UL 508
cUL test standard	C22.2 No. 14-95

ADDITIONAL DATA

Tariff code	39259020
Country of origin	DE
Weight	48.1 g
Pack size	1



Screw for usage: ISO 4762 / DIN 912



Torque for the frame's mounting screw: 3 Nm