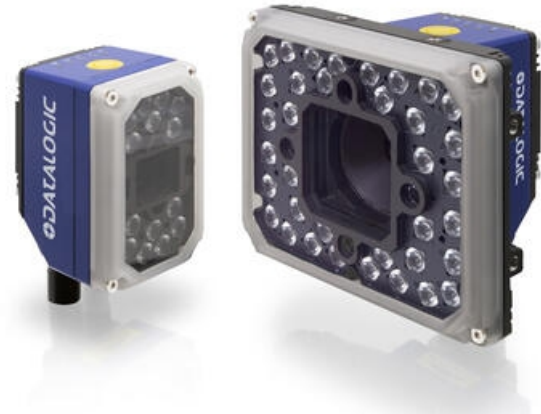


DATALOGIC MATRIX 320 IMAGER

MATRIX320700030X
938100071, CM 2MP 1/3", X

- 2MP imager
- Detects 1D and 2D code types
- Frame rates up to 60fps
- Integrated communication via Ethernet
10/100/1000Mbit/s, Serial RS232/RS422FD, OPC UA



PRODUCT DESCRIPTION

With its superior 2MP sensor, Matrix 320 offers a complete solution and top performance to achieve higher productivity. The Matrix 320 combines its excellent reading performance and a powerful Smart configurable 3 colour lighting option to solve extremely challenging traceability applications. Incorporating its reactivity and outstanding Depth of Field (DOF) to boost productivity in various Industrial and Logistics applications. It is equipped with embedded electronic focus that dramatically reduces installation time and allows easy reconfiguration. This feature was added to improve production flexibility in line with Industry 4.0 requirements. Matrix 320 is very easy to install with its improved integrated aiming system, X-Press button HMI and DL Code software. Full industrial connectivity, overall compactness and rotating connectors make Matrix 320 an extremely easy install into every industrial environment. Performance Analysis is also simplified by a new web interface to monitor the reader with a complete suite of diagnostics that leverages a new generation of FTP image saving. The new web Device Discovery simplifies the access and monitoring of all the readers in the network. The Matrix 320 provides the highest flexibility with a modular design complemented by a complete portfolio of lenses, lightings, filters, and accessories.

TECHNICAL DATA

Colour LED	Blue, White, Infrared, Ultraviolet
Digital inputs	2
Digital outputs	3
Dimension (mm)	108.7 x 54 x 55.5
Integrated communication interface	Ethernet 10/100/1000Mbit/s, Serial RS232/RS422FD, OPC UA

IP class	IP65, IP67
Lens material	Plastic
Lens type	C-Mount Lens
Material of body	Aluminium
Number of LEDs	36
Programming options	DL.CODE, Serial Host Mode programming, X-PRESS Human Machine Interface
Readable code types	1D / Linear Codes, 2D Codes
Resolution	1920 x 1080 (2.0MP)
Sensor size	1/3"
Sensor Type	CMOS
Shutter type	Global
Storage temperature max	70 °C
Storage temperature min	-20 °C
Supply voltage	24 V DC
Temperature operational max	50 °C
Temperature operational min	-10 °C
Weight	300 g
Viewing angle	4mm(68°), 6mm(48°), 8mm(37°), 12mm(25°), 16mm(19°), 25mm(12°), 35mm(9°)