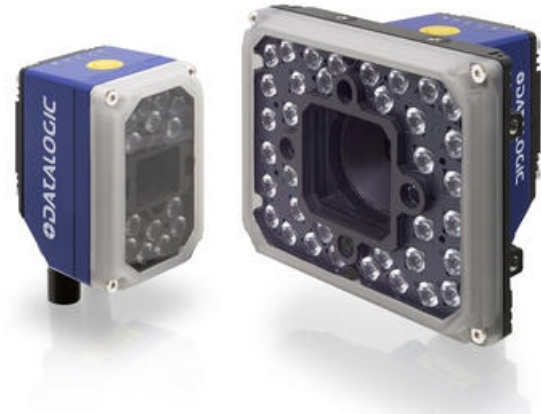


## DATALOGIC MATRIX 320 IMAGER

MATRIX320701230

938100017, 14 LEDs, 6mm optics, 60°, Red

- 2MP imager
- Detects 1D and 2D code types
- Frame rates up to 60fps
- Integrated communication via Ethernet  
10/100/1000Mbit/s, Serial RS232/RS422FD, OPC UA



### PRODUCT DESCRIPTION

With its superior 2MP sensor, Matrix 320 offers a complete solution and top performance to achieve higher productivity. The Matrix 320 combines its excellent reading performance and a powerful Smart configurable 3 colour lighting option to solve extremely challenging traceability applications. Incorporating its reactivity and outstanding Depth of Field (DOF) to boost productivity in various Industrial and Logistics applications. It is equipped with embedded electronic focus that dramatically reduces installation time and allows easy reconfiguration. This feature was added to improve production flexibility in line with Industry 4.0 requirements. Matrix 320 is very easy to install with its improved integrated aiming system, X-Press button HMI and DL Code software. Full industrial connectivity, overall compactness and rotating connectors make Matrix 320 an extremely easy install into every industrial environment. Performance Analysis is also simplified by a new web interface to monitor the reader with a complete suite of diagnostics that leverages a new generation of FTP image saving. The new web Device Discovery simplifies the access and monitoring of all the readers in the network. The Matrix 320 provides the highest flexibility with a modular design complemented by a complete portfolio of lenses, lightings, filters, and accessories.

### TECHNICAL DATA

Colour LED	Red
Digital inputs	2
Digital outputs	3
Dimension (mm)	108.7 x 54 x 55.5

<b>Distance max</b>	550 mm
<b>Distance min</b>	50 mm
<b>Frame rate max</b>	60 fps
<b>Integrated communication interface</b>	Ethernet 10/100/1000Mbit/s, Serial RS232/RS422FD, OPC UA
<b>IP class</b>	IP65, IP67
<b>Lens material</b>	Plastic
<b>Lens type</b>	Liquid Lens, 60° aperture
<b>Material of body</b>	Aluminium
<b>Number of LEDs</b>	14
<b>Power consumption</b>	10 W
<b>Programming options</b>	DL.CODE, Serial Host Mode programming, X-PRESS Human Machine Interface
<b>Readable code types</b>	1D / Linear Codes, 2D Codes
<b>Resolution</b>	1920 x 1080 (2.0MP)
<b>Sensor size</b>	1/3"
<b>Sensor Type</b>	CMOS
<b>Shutter type</b>	Global
<b>Storage temperature max</b>	70 °C
<b>Storage temperature min</b>	-20 °C
<b>Supply voltage</b>	24 V DC
<b>Temperature operational max</b>	45 °C
<b>Temperature operational min</b>	-10 °C
<b>Weight</b>	380 g
<b>Viewing angle</b>	6mm