

## CROUZET - GND SERIES SOLID STATE RELAY

Panel Mount - DC Output

84137850N  
 SSR 10A 5-200 VDC Out 4-32 VDC In

- DC Switching
- Output current 10 - 40 Amps
- Built-in overvoltage protection
- LED input status indicator



### PRODUCT DESCRIPTION

## TECHNICAL DATA

### OVERVIEW

Output current	10 A
Output voltage	5-200V dc
Control voltage	4-32V dc
Mounting	Panel mount
Type of control	DC Switching

### OUTPUT SPECIFICATION

Output voltage	5-200V dc
Maximum Load Current	20 A rms
Minimum Load Current	5 mA rms
Transient Voltage	200 V pk
Maximum off-state leakage current	3 mA rms
Maximum on-state voltage drop	0.97V pk
Thermal resistance junction to case	0.66 °C/W
Minimum heat sink for rated current @ 40 °C	3.4 °C/W
Number of poles	1

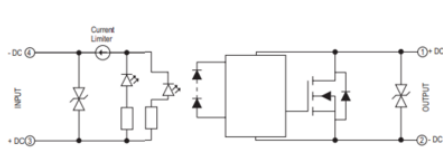
### INPUT SPECIFICATION

<b>Control voltage</b>	4-32V dc
<b>Maximum reverse voltage</b>	-32V dc
<b>Minimum turn-on voltage</b>	3.5V dc
<b>Must turn-off voltage</b>	1V dc
<b>Input current min</b>	34 mA
<b>Input Current Max</b>	35 mA
<b>Maximum turn-on time (ms)</b>	0.02
<b>Maximum turn-off time (ms)</b>	0.02

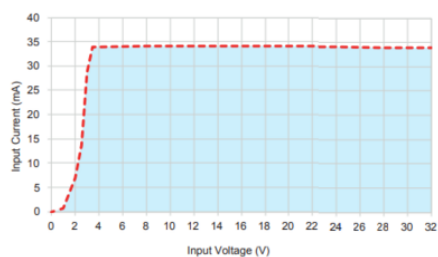
## GENERAL SPECIFICATION

<b>Ambient operating temperature</b>	-25 ... +90°C
<b>Ambient storage temperature</b>	-40 ... +100°C
<b>Weight</b>	80 g
<b>Height</b>	59.4 mm
<b>Width</b>	44.5 mm
<b>Depth</b>	29.1 mm
<b>Housing material</b>	UL94 V-0
<b>Material base</b>	Aluminium
<b>LED input status indicator</b>	Green
<b>Approvals</b>	CE, cRUus

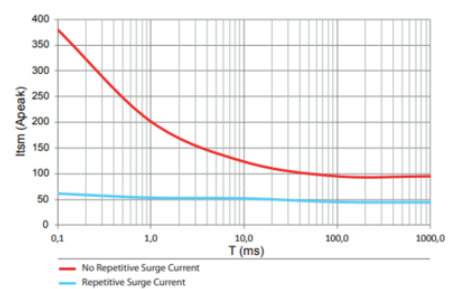
GND Series DC control without output protection



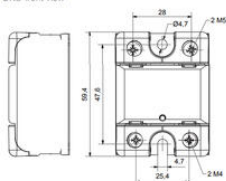
Input current vs Input Voltage  
Standard Regulated DC inputs



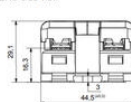
GND - 10 A

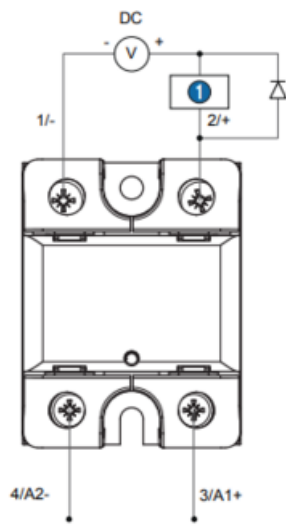


GND front view



GND side view





GND

1 Load