

CROUZET - GNA SERIES SOLID STATE RELAY

Panel Mount - AC Output Single Phase

84137910N
 SSR 25A 24-280 VAC Out 4-32 VDC In ZC

- Zero cross switching
- Output current 25 - 90 Amps
- Cost effective solution
- LED input status indicator



PRODUCT DESCRIPTION

TECHNICAL DATA

OVERVIEW

| | |
|-----------------|----------------------|
| Output current | 25 A |
| Output voltage | 24-280V ac |
| Control voltage | 4-32V dc |
| Mounting | Panel mount |
| Type of control | Zero voltage turn on |

OUTPUT SPECIFICATION

| | |
|--|-------------------------|
| Output voltage | 24-280V ac |
| Maximum Load Current | 25 A rms |
| Minimum Load Current | 5 mA rms |
| Transient Voltage | 600 V pk |
| Maximum off-state leakage current | 1 mA rms |
| 1 Second surge current | 100 |
| Maximum 1 cycle surge current | 270/284 (min) 340 (typ) |
| Maximum on-state voltage drop | 1.22V |
| Thermal resistance junction to case | 1.7 °C/W |
| Maximum 1/2 Cycle I ² t for fusing (A ² sec) | 487 |

| | |
|---|----------|
| Minimum heat sink for rated current @ 40 °C | 1.3 °C/W |
| Number of poles | 1 |

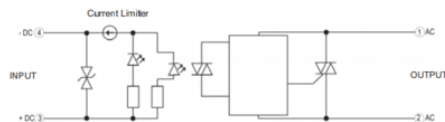
INPUT SPECIFICATION

| | |
|----------------------------|-----------|
| Control voltage | 4-32V dc |
| Maximum reverse voltage | -32V dc |
| Minimum turn-on voltage | 3V dc |
| Must turn-off voltage | 1V dc |
| Input current min | 10 mA |
| Input Current Max | 14 mA |
| Maximum turn-on time (ms) | 1/2 Cycle |
| Maximum turn-off time (ms) | 1/2 Cycle |

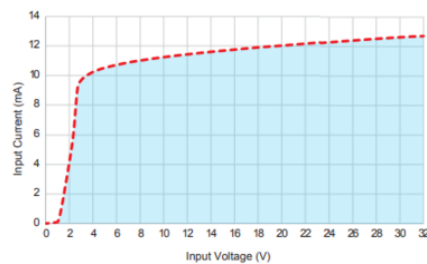
GENERAL SPECIFICATION

| | |
|---|----------------|
| Dielectric strength input to output (50/60Hz) | 4000 V rms |
| Ambient operating temperature | -40 ... +80°C |
| Ambient storage temperature | -40 ... +100°C |
| Weight | 80 g |
| Height | 59.4 mm |
| Width | 44.5 mm |
| Depth | 29.1 mm |
| Housing material | UL94 V-0 |
| Material base | Aluminium |
| LED input status indicator | Green |
| Approvals | CE, cRUus, VDE |

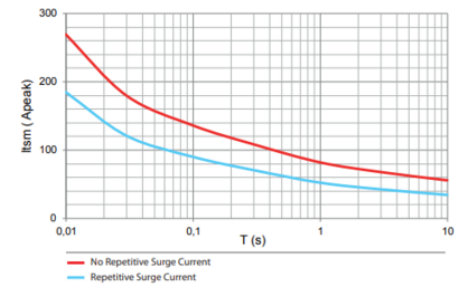
GNA Series DC control / Triac 25 A



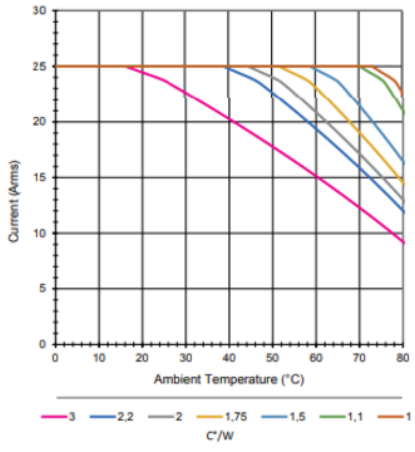
Input current vs Input Voltage
Standard Regulated DC inputs



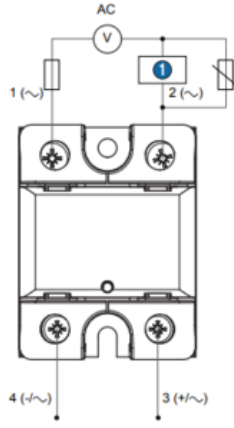
GNA - 25 A



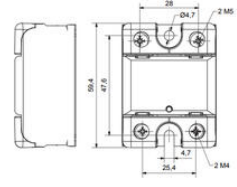
GNA - 25 A



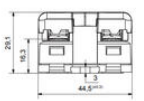
GNA



GNA front view



GNA side view



Recommended overvoltage external protection: TVS Diode

1 Load