

## GNR SERIES 45MM RELAY

GNR35AHZ

DIN Rail SSR 45mm 600V ac 35A, 240V ac In, ZC



- Load current 35A and 45A
- Operating Voltage 48-600 VAC
- Control Voltage 4-32 VDC, 90-140 VAC and 180-260 VAC
- Broad range of power ratings



### PRODUCT DESCRIPTION

These relays offer a broad range of power ratings which makes them suitable for diverse applications. Their high reliability and efficient design have made of them a market favorite for many years.

- Current ratings of 35 and 45 amps
- Output voltage rating: 48-600 VAC
- Direct Bond Copper (DBC) Substrate
- LED input status indicator
- UL 508 Endurance Rating for Enhanced Reliability
- UL/CSA/TUV Approved, CE Compliant
- Built-in overvoltage protection
- DIN Rail or Panel Mount
- Zero voltage or Instantaneous turn-on output

## TECHNICAL DATA

### OVERVIEW

Output current	35 A
Output voltage	48-600V ac
Control voltage	180-260V ac
Connection	Screw connection
Type of control	Zero voltage turn on
Activation	0 V
Additional features	Relay configuration

### OUTPUT SPECIFICATION

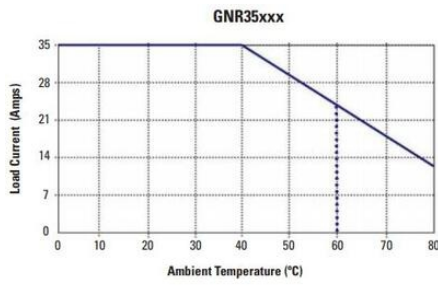
<b>Output voltage</b>	48-600V ac
<b>Leakage current at V max, T=25°C max</b>	1 mA
<b>Peak voltage</b>	1100 V
<b>Peak current</b>	130
<b>Voltage drop over semiconductor at max</b>	1.35 V
<b>Number of poles</b>	1
<b>I2t value</b>	2230 A²s

## INPUT SPECIFICATION

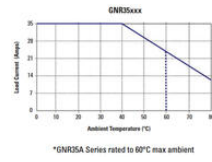
<b>Control voltage</b>	180-260V ac
<b>Turn-off voltage</b>	10 V
<b>Input current min</b>	6 mA
<b>Input current max</b>	8 mA
<b>Response time</b>	30 ms
<b>Release time</b>	20 ms

## GENERAL SPECIFICATION

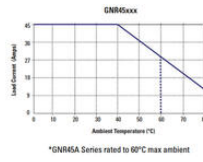
<b>Insulation voltage in/out</b>	4000 V
<b>Temperature operational min</b>	-20 °C
<b>Temperature operational max</b>	80 °C
<b>Storage temperature max</b>	100 °C
<b>Storage temperature min</b>	-40 °C
<b>Weight</b>	400 g
<b>Height</b>	88.1 mm
<b>Width</b>	45 mm
<b>Depth</b>	120.7 mm
<b>LED indication</b>	Input status indication
<b>Approvals</b>	CE, CSA, EMC, UL
<b>IP class</b>	IP20
<b>Load voltage</b>	AC



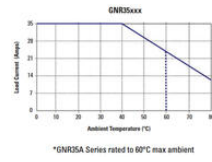
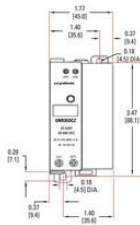
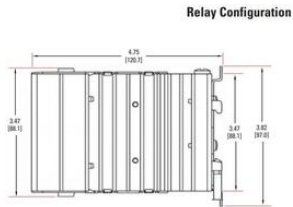
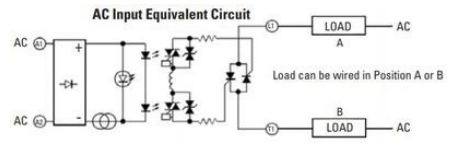
\*GNR35A Series rated to 60°C max ambient



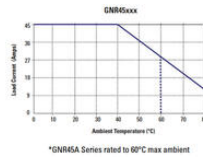
\*GNR5A Series rated to 60°C max ambient



\*GNR15A Series rated to 60°C max ambient



\*GNR5A Series rated to 60°C max ambient



\*GNR15A Series rated to 60°C max ambient