

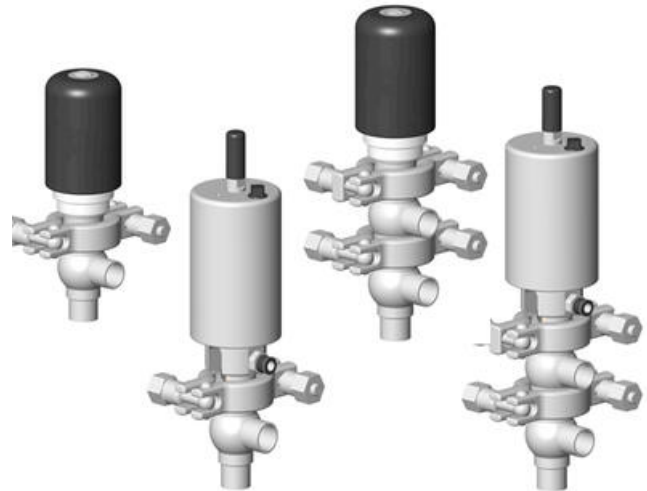
DEFINOX - DCX 3 & DCX 4 MINI

Manual & Pneumatic

DE-MU019F37100

DCX4 mini, 3/4" L-T-body, Manual, SS/PFA/FKM

- High packing pressure
- Independent and compact body
- Many configuration options
- Possible use on a wide range of applications



PRODUCT DESCRIPTION

Definox Mini Seat Valves.

This seat valve design offers a wide range of options and variants.

Technical advantages:

- From 1/2" to 1"
- Fitted with PEEK plug as standard - inert to chemical products
- Welded or Clamp ends possible
- Ergonomic handle with visual opening indicator
- Elastomer seal available for charged products
- High packing pressure
- Self-contained and compact body with a wide range of configuration options:
- Possible use on a wide range of applications
- Easy and fast maintenance thanks to the clamp assembly

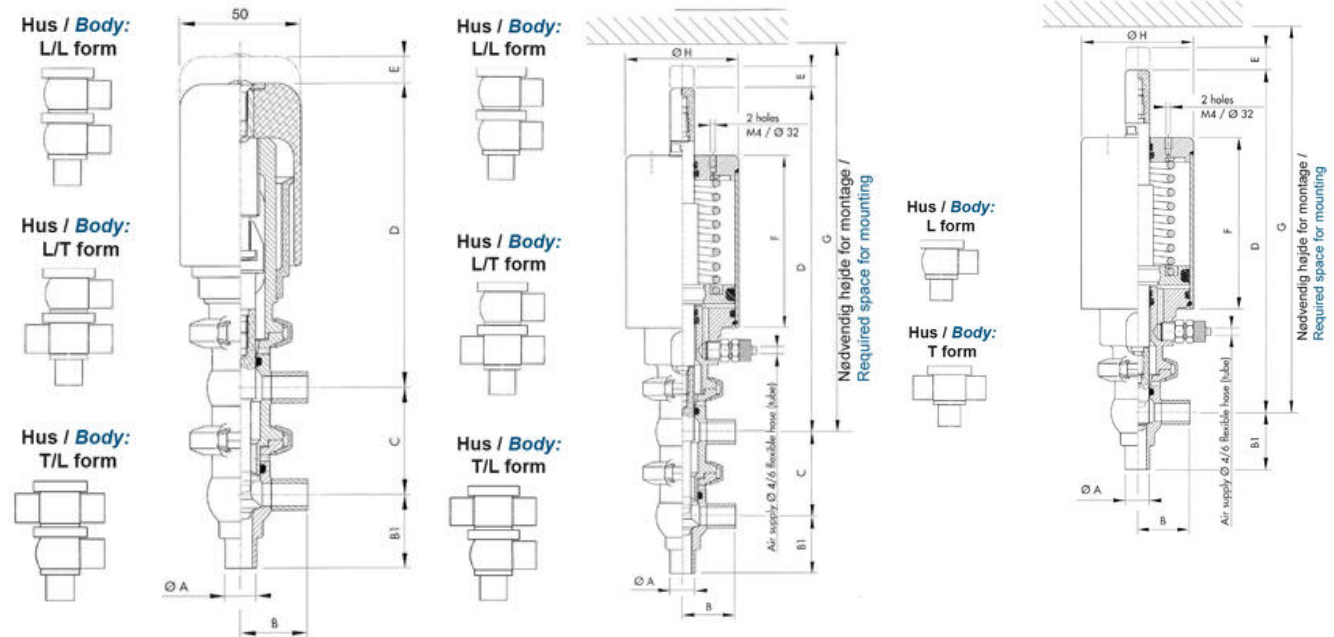
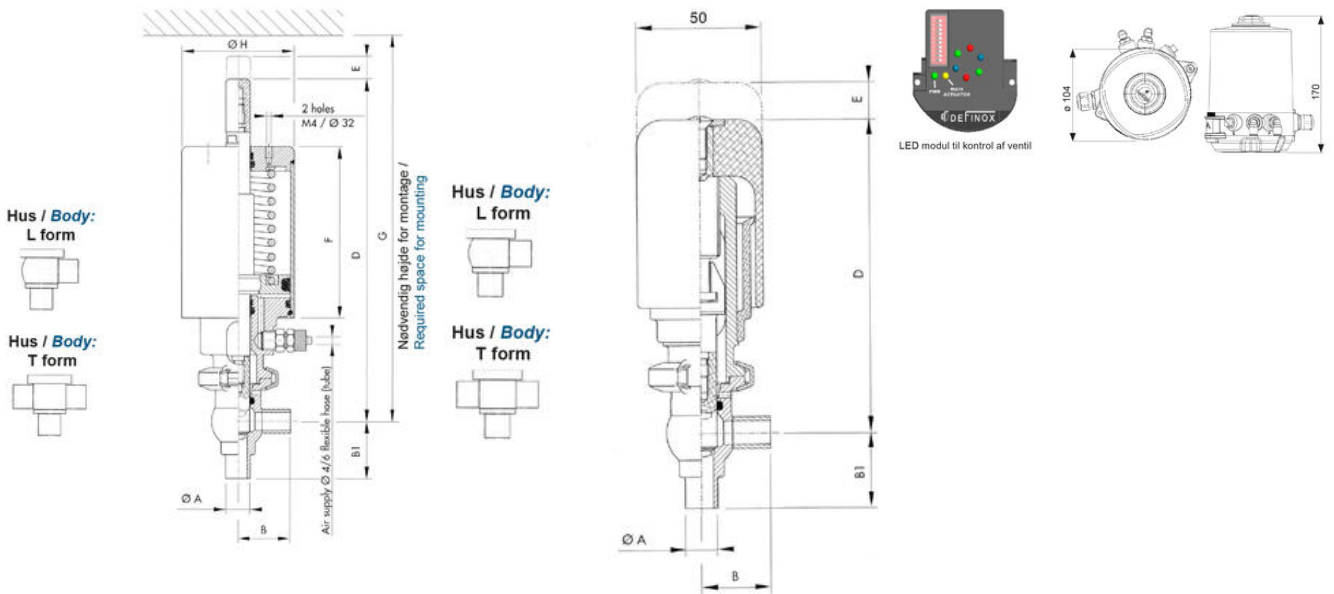
TECHNICAL DATA

Certificate	3.1 EN10204
Connection type	Weld ends
Description	STEEL PLUG
Housing	L+T Body
Housing	PFA/FKM
Inner diameter	15.75 mm
Material quality	1.4404
Operating pressure max	18 bar
Outer diameter	19.05 mm
Surface finish	Indv.: RA 0,8µm Udv.: 1,2µm

Temperature operational max 140 °C

Temperature operational min -5 °C

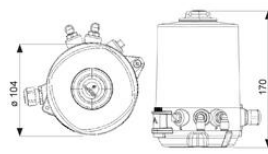
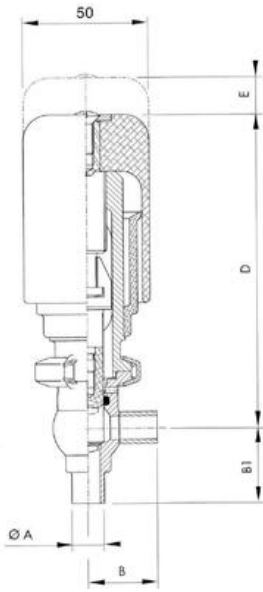
Weight 1.7 kg



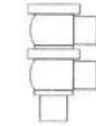
Hus / Body:
L form



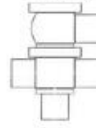
Hus / Body:
T form



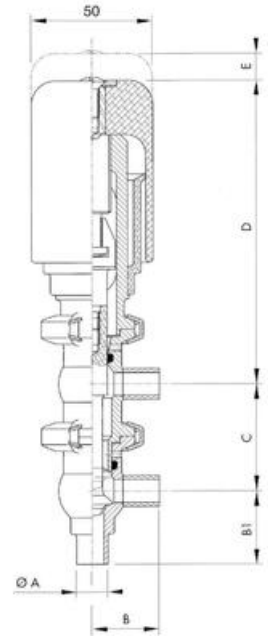
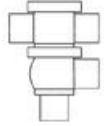
Hus / Body:
L/L form



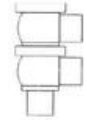
Hus / Body:
L/T form



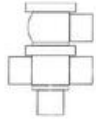
Hus / Body:
T/L form



Hus / Body:
L/L form



Hus / Body:
L/T form



Hus / Body:
T/L form

