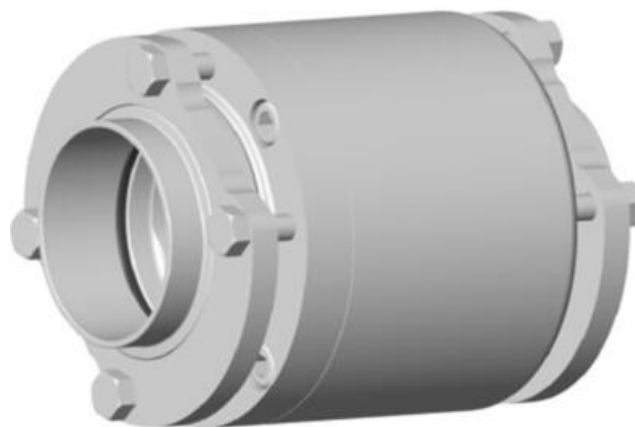


DEFINOX - CHECK VALVE BETWEEN FLANGES

DE-UD050A32100

Check valve, DN50, SS 316L/PFA/FKM

- Designed for a minimal pressure drop
- Vertical mounting for an improved seal
- Quick and easy installation
- Connection: Between Flanges with welding ends
- Sealing types: PFA - FKM - EPDM - PTFE



PRODUCT DESCRIPTION

Our products are of high quality and design that meet the strongest requirements of process technology and are the ideal solution for Food, Brewery, Cosmetics and Pharmaceutical processes!

Technical Advantages:

- 1/2" - DN 125
- Interior surface roughness $R_a = 0.8 \mu m$
- Vertical mounting for an improved seal and eliminate retention
- Fast and easy disassembly
- Connection: Welding ends
- Multiple packing types: PFA - FKM - EPDM.
- Approvals: 3A - ATEX - DESP - 3.1 - 2.1 - E1935 / 2004 - CE - REACH - ANIA

TECHNICAL DATA

Certificate	3.1 EN10204
Connection type	Weld ends between flanges
Design norm	DIN
Housing	PFA/FKM
Inner diameter	50 mm
Material quality	1.4404
Operating pressure max	10 bar
Outer diameter	53 mm
Output	90 Mbar
Surface finish	$RA < 0,8/1,2 \mu m$
Temperature operational max	120 °C
Temperature operational min	0 °C

Weight

1.6 kg