

DEFINOX - SAMPLING VALVE - MICRO & MINI

Manual and Pneumatic

DE-PD015B6M4100

Mini valve 2 x 16/18 pipes, Pneumatic, PFA/EPDM

- SIP or CIP
- Simple and safe solution for sampling
- Compact pneumatic actuator
- Fast and easy membrane replacement
- 3.1 EN10204 - EHEDG



PRODUCT DESCRIPTION

PEX Test outlet valve

Specifications:

- DN 6/8 - DN 16/18

Materials:

- Body: stainless steel 1.4404 / 316L machined from solid piece
- Handle: white plastic or stainless steel 1.4301 / 304
- Membrane: FKM (black / green with spot) - WMQ (white) - EPDM (black) - PFA / EPDM (white - hard)

Connections:

- Clamp - Micro Ø25.4 mm or Mini Ø33.9 mm

Controls:

- Manual - PEX - Ergonomic handle
- Pneumatic

Surface:

- RA exterior = 0.8 µm
- RA inside = 0.8 µm standard (0.4 µm on request)

Operating conditions:

- Max. temperature: + 120 ° C
- Min. temperature: 0 ° C
- Max. working pressure: 10 bar

TECHNICAL DATA

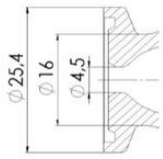
Certificate	3.1 EN10204
Connection type	Mini clamp
Description	Pneumatic
Flange	Ø33.9mm
Housing	Aisi 316L/ 1.4404
Housing	PFA/EPDM

Process connection

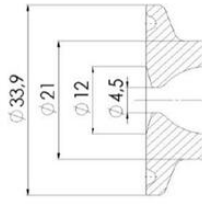
2 x 16/18 pipes

Surface finish

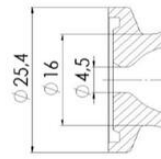
RA<0,8/1,2μm



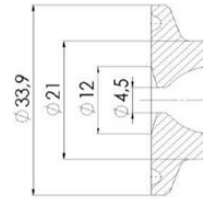
Micro flange



Mini flange



Micro flange



Mini flange