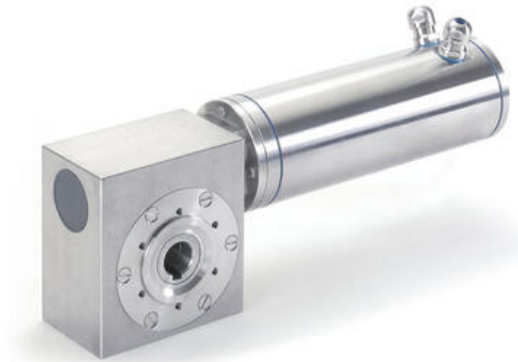


MINIMOTOR - SXCFSS STAINLESS STEEL WORM GEAR MOTOR

SXCFSS 80/100-429
230V 429rpm 6.6 Nm

- IP69K sealing
- Full stainless steel outer parts
- Up to 70Nm rated torque
- Brushless AC motor with resolver feedback



PRODUCT DESCRIPTION

MOTOR: Brushless three-phase 4-pole motor, totally enclosed. Rotor with NdFeB magnets. Thermal cutoff. Winding Class H. Protection IP69K in compliance with IEC/EN 60529 standards. 2-Pole resolver feedback. Bearings with reduced backlash with special grease and high-temperature rubber seal rings. Easy and quick to clean thanks to the smooth surface design. Power 345 to 740W.

GEAR UNIT: worm gear unit with stainless steel gearcase. 50 mm centre distance. Bronze crown. The worm is made of tempered steel, with ground thread. Seal rings in special high-temperature rubber. Lubrication with special long-lasting oil for use in food areas (H1).

There are 12 available gear ratios (i), from 7 to 100.

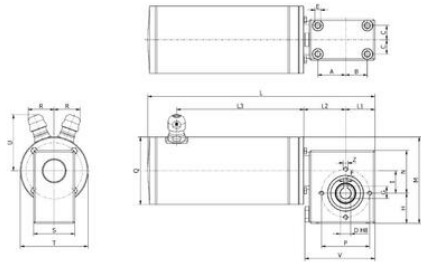
Rated torque up to 70.0 Nm.

[Please click here for 2D and 3D drawings](#)

TECHNICAL DATA

Input voltage ac	230V
IP class	IP69K
Nominal speed	429 rpm

Nominal torque	6.6
Output power	345 W
Rated current	2.63 A
Ratio	7:1

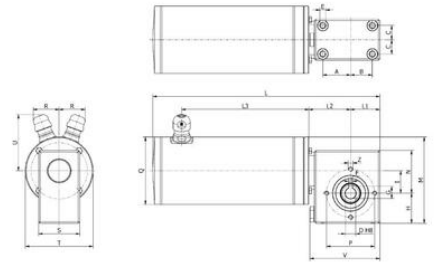


Type	A	B	C	D	E	F	G	H	I	L	L1	L2
SXCFSS80100	48	56	30	25	M8x11	8	28.3	60	50	397	68	70
SXCFSS104M	48	56	30	25	M8x11	8	28.3	60	50	402	68	68

Type	L3	M	N	P	Q	R	S	T	U	V	Z	Price Euro/Unit Pack Size
SXCFSS80100	220,5	155	81	75	90	33,5	81	90	60,5	135	M8x9	15,78
SXCFSS104M	227,5	170	81	75	120	33,5	81	120	78	135	M8x9	18,90

DCU model selection

Please see product description above for 2D and 3D drawings



Type	A	B	C	D	E	F	G	H	I	L	L1	L2
SXCFSS80100	48	56	30	25	M8x11	8	28.3	60	50	397	68	70
SXCFSS104M	48	56	30	25	M8x11	8	28.3	60	50	402	68	68

Type	L3	M	N	P	Q	R	S	T	U	V	Z	Price Euro/Unit Pack Size
SXCFSS80100	220,5	155	81	75	90	33,5	81	90	60,5	135	M8x9	15,78
SXCFSS104M	227,5	170	81	75	120	33,5	81	120	78	135	M8x9	18,90

DCU model selection

Please see product description above for 2D and 3D drawings