

MINIMOTOR - PCFSS STAINLESS STEEL WORM GEAR MOTOR

PCFSS 55/50-600
230V 600rpm 1.3 Nm

- IP69K sealing
- Full stainless steel outer parts
- Up to 18Nm rated torque
- Brushless AC with resolver feedback



PRODUCT DESCRIPTION

Motor: 4 pole sinusoidal brushless, featuring NdFeB rare earth magnets and sealed in stainless steel housing.

Thermal protection, Class H winding and IP69K protection according to IEC/EN 60529 standards.

2 pole resolver for feedback. Roller bearings with reduced backlash for smoother operation and high temperature grease.

Gear unit: Stainless steel body, bronze crown gear. Tempered steel screw rotating on spherical ball bearings and lubricated with NSF-H1 oil for a long life.

Rated torque 80Nm.

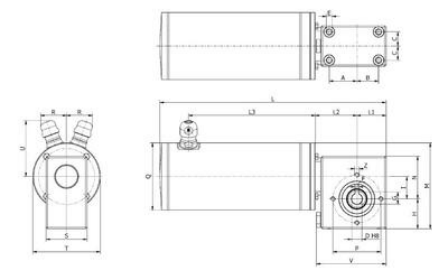
Designed as per EHEDG hygiene guidelines requirements

[Please click here for 2D and 3D drawings.](#)

TECHNICAL DATA

Input voltage ac	230V
IP class	IP69K
Nominal speed	600 rpm

Nominal torque	1.3
Output power	94 W
Rated current	0.67 A
Ratio	5:1



OCV model selection



Electric motor
15.06.2017



Geared motor
15.06.2017



Worm gearmotors
15.06.2017



Brushless servomotors
15.06.2017

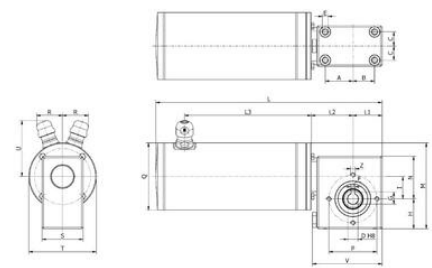


Clean products
15.06.2017



Drivers

Please see product description above for 2D and 3D drawings



The Type Type	A	B	C	D	E	F	G	H	I	L	L1	L2
PCFSS5500	37	29	19	14	M8x11	5	16,3	40	30	297,5	39	55,5
PCFSS8000	37	29	19	14	M8x11	5	16,3	40	30	302,5	39	55,5

The Type Type	L3	M	N	P	Q	R	S	T	U	V	Z	Peak output Power (kg)
PCFSS0300	164,5	115	57	64	66	33,5	55	90	47,5	93	M8x7	6,90
PCFSS8000	169,5	110	57	64	90	33,5	55	90	60,5	93	M8x7	9,10

The Type Type	A	B	C	D	E	F	G	H	I	L	L1	L2
PCFSS5500	37	29	19	14	M8x11	5	16,3	40	30	297,5	39	55,5
PCFSS8000	37	29	19	14	M8x11	5	16,3	40	30	302,5	39	55,5

The Type Type	L3	M	N	P	Q	R	S	T	U	V	Z	Peak output Power (kg)
PCFSS0300	164,5	115	57	64	66	33,5	55	90	47,5	93	M8x7	6,90
PCFSS8000	169,5	110	57	64	90	33,5	55	90	60,5	93	M8x7	9,10


OCV model selection




Electric motor
15.06.2017




Geared motor
15.06.2017



Worm gearmotors
15.06.2017



Brushless servomotors
15.06.2017



Clean products
15.06.2017



Drivers

Please see product description above for 2D and 3D drawings