

MINIMOTOR XCFSS STAINLESS STEEL WORM GEAR MOTOR

XCFSS 80/100-10
230V 300rpm 9.1 Nm

- IP69K sealing
- Full stainless steel outer parts
- Up to 39Nm rated torque
- Brushless AC motor with resolver feedback



PRODUCT DESCRIPTION

MOTOR: Brushless three-phase 4-pole motor, totally enclosed. Rotor with NdFeB magnets. Thermal cutoff. Winding Class H. Protection IP69K in compliance with IEC/EN 60529 standards. 2-Pole resolver feedback. Bearings with reduced backlash with special grease and high-temperature rubber seal rings. Easy and quick to clean thanks to the smooth surface design. Power 180 to 345W.

GEAR UNIT: worm gear unit with stainless steel gearcase. 45 mm centre distance. Bronze crown. The worm is made of tempered steel, with ground thread. Seal rings in special high-temperature rubber. Lubrication with special long-lasting oil for use in food aread. (H1).

There are 10 available gear ratios (i), from 7 to 102. Rated torque up to 38.8 Nm.

Version B3 - B14

Designed as per EHEDG hygiene guidelines requirements.

ALWAYS specify application environment.

[Please click here for 2D and 3D drawings](#)

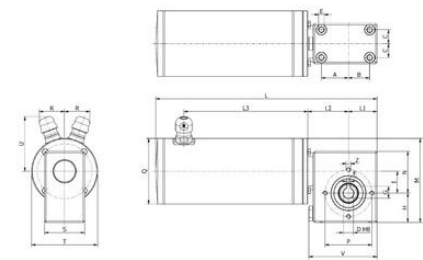
TECHNICAL DATA

Input voltage ac	230V 50Hz
IP class	IP69K
Nominal torque	9.1
Output power	345 W

Rated current 2.63 A

Rated speed 300 rpm

Ratio 10:1



Type Type Type Type	A	B	C	D	E	F	G	H	I	L	L1	L2
XCFSS8050	43	43	21	18	M6x11	6	20,8	55	45	329,5	55	65,5
XCFSS80100	43	43	21	18	M6x11	6	20,8	55	45	379,5	55	65,5

Type Type Type Type	L3	M	N	P	Q	R	S	T	U	V	Z	Price Weight Length Width Height mm kg
XCFSS8050	170,5	145	72	64	90	33,5	65	90	60,5	117	M6x7	11,13
XCFSS80100	220,5	145	72	64	90	33,5	65	90	60,5	117	M6x7	13,13

CFI model selection



Electric motor
15.06.2017



Geared motor
15.06.2017



Worm gearmotors
15.06.2017



Brushless servomotors
15.06.2017

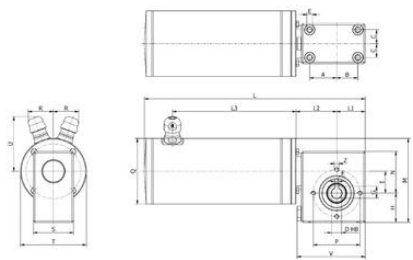


Clean products
15.06.2017



Others

Please see product description above for 2D and 3D drawings



Type Type Type Type	A	B	C	D	E	F	G	H	I	L	L1	L2
XCFSS8050	43	43	21	18	M6x11	6	20,8	55	45	329,5	55	65,5
XCFSS80100	43	43	21	18	M6x11	6	20,8	55	45	379,5	55	65,5

Type Type Type Type	L3	M	N	P	Q	R	S	T	U	V	Z	Price Weight Length Width Height mm kg
XCFSS8050	170,5	145	72	64	90	33,5	65	90	60,5	117	M6x7	11,13
XCFSS80100	220,5	145	72	64	90	33,5	65	90	60,5	117	M6x7	13,13

CFI model selection



Electric motor
15.06.2017



Geared motor
15.06.2017



Worm gearmotors
15.06.2017



Brushless servomotors
15.06.2017



Clean products
15.06.2017



Others

Please see product description above for 2D and 3D drawings