

MINIMOTOR XCFSS STAINLESS STEEL WORM GEAR MOTOR

XCFSS 80/50-7
230V 429rpm 3.4 Nm

- IP69K sealing
- Full stainless steel outer parts
- Up to 39Nm rated torque
- Brushless AC motor with resolver feedback



PRODUCT DESCRIPTION

MOTOR: Brushless three-phase 4-pole motor, totally enclosed. Rotor with NdFeB magnets. Thermal cutoff. Winding Class H. Protection IP69K in compliance with IEC/EN 60529 standards. 2-Pole resolver feedback. Bearings with reduced backlash with special grease and high-temperature rubber seal rings. Easy and quick to clean thanks to the smooth surface design. Power 180 to 345W.

GEAR UNIT: worm gear unit with stainless steel gearcase. 45 mm centre distance. Bronze crown. The worm is made of tempered steel, with ground thread. Seal rings in special high-temperature rubber. Lubrication with special long-lasting oil for use in food aread. (H1).

There are 10 available gear ratios (i), from 7 to 102. Rated torque up to 38.8 Nm.

Version B3 - B14

Designed as per EHEDG hygiene guidelines requirements.

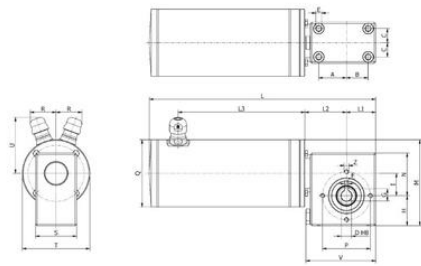
ALWAYS specify application environment.

[Please click here for 2D and 3D drawings](#)

TECHNICAL DATA

Input voltage ac	230V 50Hz
------------------	-----------

IP class	IP69K
Nominal torque	3.4
Output power	180 W
Rated current	1.48 A
Rated speed	429 rpm
Ratio	7:1

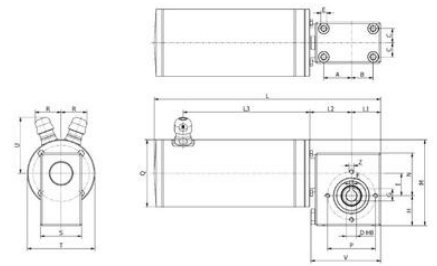


Type	A	B	C	D	E	F	G	H	I	L	L1	L2
XCFSS8050	43	43	21	18	M6x11	6	20,8	55	45	329,5	55	65,5
XCFSS80190	43	43	21	18	M6x11	6	20,8	55	45	379,5	55	65,5

Type	L3	M	N	P	Q	R	S	T	U	V	Z	Price range (approx. Price per unit)
XCFSS8050	170,5	145	72	64	90	33,5	65	90	60,5	117	M6x7	11,13
XCFSS80190	220,5	145	72	64	90	33,5	65	90	60,5	117	M6x7	13,13

DCI model selection

Please see product description above for 2D and 3D drawings



Type	A	B	C	D	E	F	G	H	I	L	L1	L2
XCFSS8050	43	43	21	18	M6x11	6	20,8	55	45	329,5	55	65,5
XCFSS80190	43	43	21	18	M6x11	6	20,8	55	45	379,5	55	65,5

Type	L3	M	N	P	Q	R	S	T	U	V	Z	Price range (approx. Price per unit)
XCFSS8050	170,5	145	72	64	90	33,5	65	90	60,5	117	M6x7	11,13
XCFSS80190	220,5	145	72	64	90	33,5	65	90	60,5	117	M6x7	13,13

DCI model selection

Please see product description above for 2D and 3D drawings