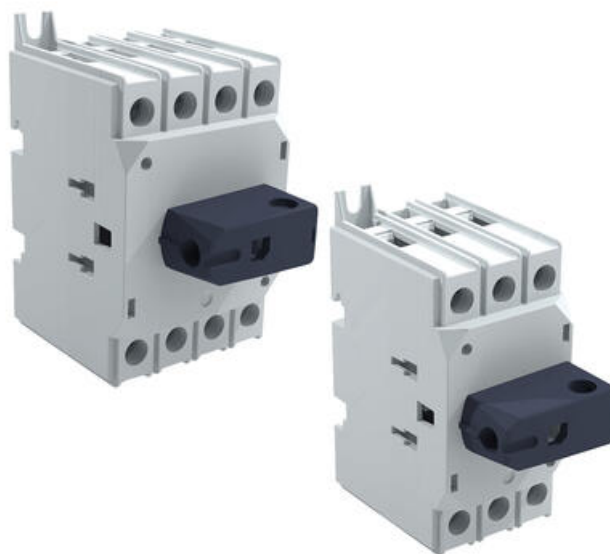


16-40A SWITCH DISCONNECTORS

26130

RT 340 L42AD11, Door Mounted, 3-Pole, 40A

- Din rail/screw and door mounting options available
- 3 and 4 pole as standard, other configurations on request
- Silver contacts ensure safe and durable operation
- Tested according to IEC 60947-3



PRODUCT DESCRIPTION

Katko 16-40A switch disconnectors are available with either DIN-rail or screw mounting (KU) and door mounting (RT). 3-pole and 4-pole KU-switches as standard. Other configurations on request.

Switch technology by means of silver contacts ensures safe and durable operation.

Compatible (KU & RT) with handles LKX50, LKX50YR, LK10 and LK10YR.

Compatible (KU) with LXXXAD11 shafts (XXX is length of the shaft in millimetres)

Door mounted versions come with integrated 42mm aluminium shaft with AD11 adapter. Handle is required for door mounting installation. When using any other handle than LKX50, LKX50YR, LK10RT or LK10RTYR you will also need a special counter nut for the handle (RT COUNTER NUT).

KU switch will be delivered with black direct handle. KU switches can also be used with external shaft and handle.

Tested according to IEC 60947-3.

TECHNICAL DATA

GENERAL DATA

Number of poles	3
Rated insulation voltage Ui	800 V
Rated thermal current, Ith	63 A
Type	Door-mounted
Terminals / Bolt size Cu	1.5-16
Nominal values with cable size	16
Weight	0.12 kg

RATED OPERATIONAL CURRENT, IE

Operational current - AC-21A - 400/415V	40 A
Operational current - AC-21A - 500V	40 A
Operational current - AC-21A - 690V	40 A
Operational current - AC-22A - 400/415V	40 A
Operational current - AC-22A - 500V	40 A
Operational current - AC-22A - 690V	40 A
Operational current - AC-23A - 400/415V	40 A
Operational current - AC-23A - 500V	25 A
Operational current - AC-23A - 690V	25 A

RATED OPERATIONAL POWER FOR 3-PHASE (1500 R.P.M.) SQUIRREL CAGE INDUCTION MOTORS (KW)

Operational power - AC-23A - 400/415V	22 kW
Operational power - AC-23A - 500V	15 kW
Operational power - AC-23A - 690V	22 kW

RATED FUSED SHORT CIRCUIT CURRENT

Back-up fuse	40 A
R.M.S value, IK	25
Peak value	4.5 kA
Rated impulse withstand voltage Uimp	8 kV
Rated short circuit making capacity at 690V, Icm	1
Rated short time withstand current at 690V (1 s), Icw	0.7

RATED BREAKING CAPACITY, ICN

Breaking capacity - AC-23A - 400/415V	320 A
Breaking capacity - AC-23A - 500V	200 A
Breaking capacity - AC-23A - 690V	200 A

ADDITIONAL DETAILS

Electrical endurance	3000 operations
Mechanical endurance	50000 operations
Max terminal torque	1.8
Tariff code	85365080
Country of origin	FI

