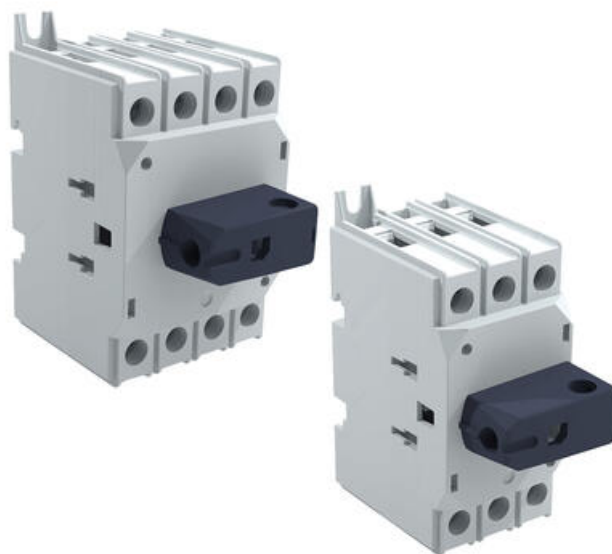


16-40A SWITCH DISCONNECTORS

25772

KU 416, Screw Mounted, 4-pole, 16A

- Din rail/screw and door mounting options available
- 3 and 4 pole as standard, other configurations on request
- Silver contacts ensure safe and durable operation
- Tested according to IEC 60947-3



PRODUCT DESCRIPTION

Katko 16-40A switch disconnectors are available with either DIN-rail or screw mounting (KU) and door mounting (RT). 3-pole and 4-pole KU-switches as standard. Other configurations on request.

Switch technology by means of silver contacts ensures safe and durable operation.

Compatible (KU & RT) with handles LKX50, LKX50YR, LK10 and LK10YR.

Compatible (KU) with LXXXAD11 shafts (XXX is length of the shaft in millimetres)

Door mounted versions come with integrated 42mm aluminium shaft with AD11 adapter. Handle is required for door mounting installation. When using any other handle than LKX50, LKX50YR, LK10RT or LK10RTYR you will also need a special counter nut for the handle (RT COUNTER NUT).

KU switch will be delivered with black direct handle. KU switches can also be used with external shaft and handle.

Tested according to IEC 60947-3.

TECHNICAL DATA

GENERAL DATA

Number of poles	4
Rated insulation voltage Ui	800 V
Rated thermal current, Ith	25 A
Type	Screw-mounted
Terminals / Bolt size Cu	1.5-16
Nominal values with cable size	4
Weight	0.15 kg

RATED OPERATIONAL CURRENT, IE

Operational current - AC-21A - 400/415V	25 A
Operational current - AC-21A - 500V	25 A
Operational current - AC-21A - 690V	25 A
Operational current - AC-22A - 400/415V	16 A
Operational current - AC-22A - 500V	16 A
Operational current - AC-22A - 690V	16 A
Operational current - AC-23A - 400/415V	16 A
Operational current - AC-23A - 500V	16 A
Operational current - AC-23A - 690V	16 A

RATED OPERATIONAL POWER FOR 3-PHASE (1500 R.P.M.) SQUIRREL CAGE INDUCTION MOTORS (KW)

Operational power - AC-23A - 400/415V	7.5 kW
Operational power - AC-23A - 500V	7.5 kW
Operational power - AC-23A - 690V	11 kW

RATED FUSED SHORT CIRCUIT CURRENT

Back-up fuse	25 A
R.M.S value, IK	50
Peak value	3.8 kA
Rated impulse withstand voltage Uimp	8 kV
Rated short circuit making capacity at 690V, Icm	1
Rated short time withstand current at 690V (1 s), Icw	0.7

RATED BREAKING CAPACITY, ICN

Breaking capacity - AC-23A - 400/415V	128 A
Breaking capacity - AC-23A - 500V	128 A
Breaking capacity - AC-23A - 690V	128 A

ADDITIONAL DETAILS

Electrical endurance	3000 operations
Mechanical endurance	50000 operations
Max terminal torque	1.8
Tariff code	85365080
Country of origin	FI

