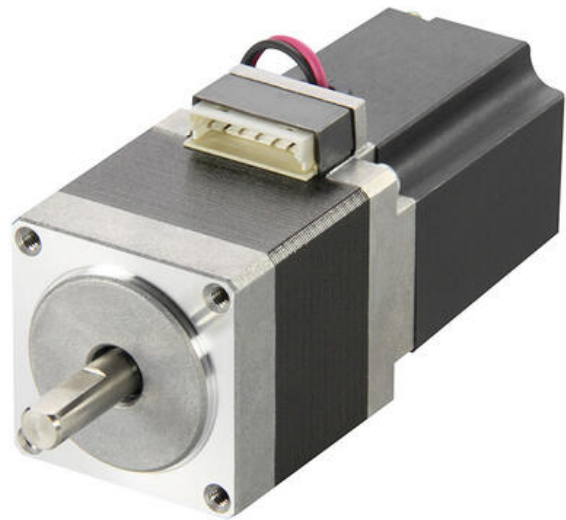


ORIENTAL MOTOR BIPOLAR 4-WIRE HIGH RESOLUTION WITH BRAKE PKP SERIES HYBRID STEPPER MOTOR

PKP243MD15M

PKP Series stepper motor, 2-Phase, 42mm frame, 4 leads, electromagnetic brake

- 42mm - 56.4mm Frame Size
- 0.3-2.23Nm Max. Holding Torque
- 1.5-2.8 A/Phase Rated Current
- Up to 1.7x more torque than other stepper motors.



PRODUCT DESCRIPTION

TECHNICAL DATA

Configuration	Electromagnetic Brake
Frame size	42 mm
Maximum Holding Torque	0.3 Nm
Number of phases	2
Number of Wires	4
Rated Current	1.5 A/Phase
Rotor Inertia	48×10^{-7}
Step angle	0.9 °
Type	High Resolution With Electromagnetic Brake
Weight	0.36 kg
Winding Resistance	1.9 Ω/Phase
Voltage	2.85 V DC

PKP243MD15M

Driver: **CVD215BR-K** Power Supply Voltage: 24 VDC Current: 1.5 A/Phase

